



2008–2009



Men's Basketball



ST. EDWARD'S
UNIVERSITY

2008–2009 Schedule

DATE	DAY	OPPONENT	SITE	TIME
NOVEMBER				
9	SU	Toledo (Exhibition)	Toledo, Ohio	5 p.m.
10	M	Wright State (Exhibition)	Dayton, Ohio	6 p.m.
12	W	Nicholls State (Exhibition)	Thibodaux, La.	6:30 p.m.
15	SA	1–Texas A&M–Commerce	Home	8 p.m.
16	SU	1–Ouachita Baptist	Home	8 p.m.
21	F	Concordia–Texas	Home	7 p.m.
25	TU	Concordia–Alabama	Home	8 p.m.
29	SA	Tarleton State	Home	3:30 p.m.
DECEMBER				
3	W	Texas A&M–Corpus Christi	Corpus Christi	7 p.m.
5	F	Fort Lewis	Durango, Colo.	9 p.m.
6	SA	Western State	Durango, Colo.	7 p.m.
18	TH	Tarleton State	Stephenville	8 p.m.
29	M	2–Arkansas–Monticello	Home	3:30 p.m.
30	TU	2–Missouri S&T	Home	3:30 p.m.
JANUARY				
5	M	Dallas Baptist*	Home	7 p.m.
8	TH	Newman*	Wichita, Kan.	8 p.m.
10	SA	Lincoln*	Jefferson City, Mo.	4:30 p.m.
15	TH	St. Mary's*	San Antonio	8 p.m.
19	M	Dallas Baptist*	Dallas	7 p.m.
22	TH	Incarnate Word*	Home	8 p.m.
24	SA	Texas A&M–International*	Home	4:30 p.m.
29	TH	Oklahoma Panhandle State*	Goodwell, Okla.	8 p.m.
31	SA	UT–Permian Basin*	Odessa	4:30 p.m.
FEBRUARY				
4	W	Incarnate Word*	San Antonio	8 p.m.
7	SA	St. Mary's*	Home	4:30 p.m.
12	TH	UT–Permian Basin*	Home	8 p.m.
14	SA	Oklahoma Panhandle State*	Home	4:30 p.m.
21	SA	Texas A&M–International*	Laredo	4:30 p.m.
26	TH	Lincoln*	Home	8 p.m.
28	SA	Newman*	Home	5:30 p.m.
MARCH				
6	F	Heartland Conference Semifinals	TBA	TBA
7	SA	Heartland Conference Finals	TBA	TBA

*Heartland Conference Games
 1 — St. Edward's University Shootout
 2 — Hilltopper Holiday Classic
 3 — Shyhawk Classic

Home matches listed in bold
 All times are Central Standard Time and are subject to change.



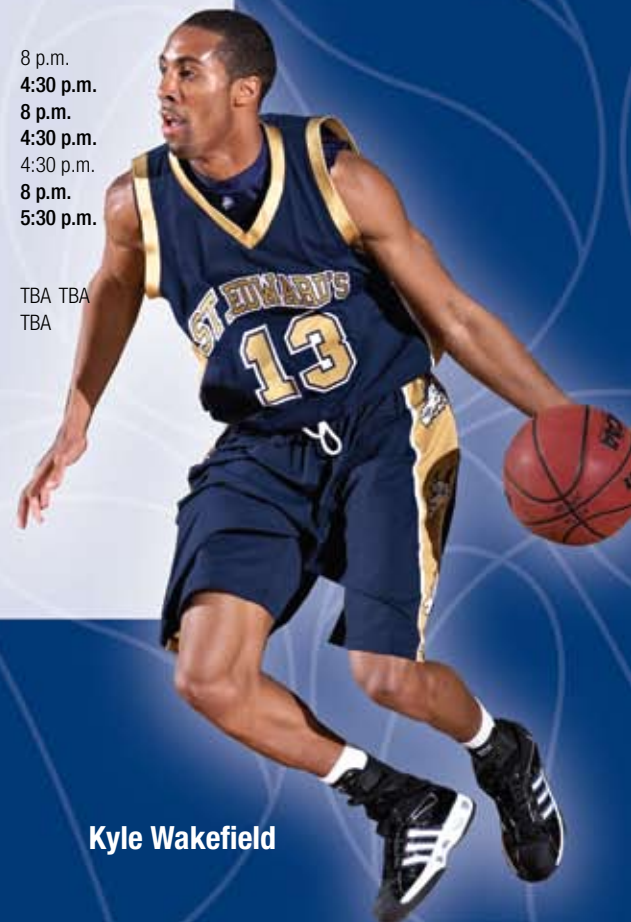
Nate Barstad



Taylor Land



Taylor Mullenax



Kyle Wakefield



Quick Facts

Location: Austin, Texas

Founded: 1885

Enrollment: 5,320

Colors: Navy and Gold

Nickname: Hilltoppers

Affiliation: NCAA Division II

Conference: Heartland

President: Dr. George E. Martin

Director of Athletics: Debbie Taylor

Associate Director of Athletics for Compliance: Melinda Terry

Associate Director of Athletics for Facilities and Events: Nikki Cockrell

Assistant Director of Athletics: Jennifer White

Faculty Athletics Representative: Dr. Michael Harris

Administrative Assistant: Monica Baker

Sports Information Director: Logan Lawrence

St. Edward's University Athletics Annual Report	2
2008–2009 Season Preview	4
Coach Profiles	6
Player Profiles	7
2007–2008 Year in Review	14
History & Records	15
St. Edward's University Athletics Administration	23
Staff Directory	25
Facilities & Equipment	26
Administration Bios	27
Spirit Program	28
Hall of Fame	30
Heartland Conference	31
About St. Edward's University	32
This is Austin	33

2 ATHLETICS ANNUAL REPORT

What It Means to Be a Student-Athlete at St. Edward's

Athletics at St. Edward's University goes far beyond simple wins and losses. It extends past conference championships and national tournaments. At St. Edward's, student-athletes are challenged to think critically and creatively and to strive for academic excellence. They participate in meaningful service activities and make a difference in the community. In other words, they embody the mission of St. Edward's.

Academic Excellence

- Sixty-three percent of all student-athletes at St. Edward's posted a 3.0 GPA or better during the Fall 2007 semester. Thirty-four percent had a 3.5 GPA or better. Sixty-seven percent of all student-athletes at St. Edward's had a 3.0 GPA or better during the Spring 2008 semester. Forty percent posted a 3.5 GPA or better.
- Ten of 13 teams registered a GPA better than 3.0 in the Fall 2007 semester. Eleven of 13 teams achieved the same feat in Spring 2008. Women's tennis, women's soccer and volleyball all achieved team GPAs above 3.5 for the 2007–2008 academic year. Baseball, men's basketball and women's tennis compiled the highest GPAs in the Heartland Conference in their respective sports. Women's soccer, volleyball and men's soccer each received a team academic award by their respective sport governing body.
- Twenty-eight student-athletes at St. Edward's achieved a 4.0 GPA in Fall 2007, while 29 student-athletes earned a 4.0 GPA in Spring 2008. Six student-athletes have a cumulative GPA of 4.0.
- One hundred thirty student-athletes received academic all-conference honors during the 2007–2008 season. Seven students were named academic all-district, three academic all-Americans and seven Arthur Ashe Jr. Sports Scholars.
- St. Edward's has an academic success rate — or graduation rate — of 82 percent among its student-athletes, which is the second-highest in the Heartland and Lone Star conferences combined. This is 13 percent higher than the NCAA Division II aggregate academic success rate of 69 percent.

3.20

The combined GPA for all student-athletes at St. Edward's during the 2007–2008 academic year



Community Service

Student-athletes at St. Edward's assisted more than 40 campus and community organizations during the 2007–2008 academic year. Highlights included:

Copperfield Elementary Math Night

Every year at Super Bowl time, Hilltopper athletes join students from Copperfield Elementary for a night of math and mentoring. The annual event brings together parents, students and more than 100 student-athletes for games and activities that allow the children to show off their math skills and discover new ones.

2,510

Hours of community service performed by student-athletes in 2007–2008

Move-in Day

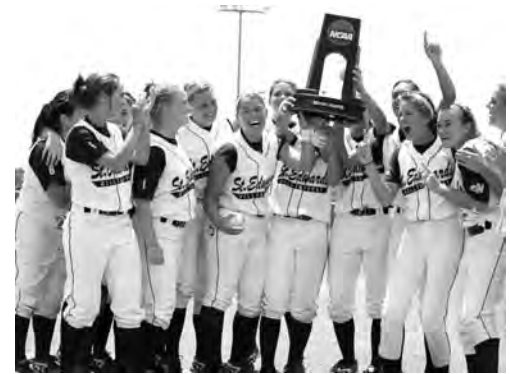
One hundred sixty-five student-athletes came together on move-in day and spent a total of 330 hours helping incoming freshmen and their parents unload suitcases, boxes and everything else that came with them to St. Edward's into the university residence halls.

Facility Upgrades

- Prior to the 2008 season, St. Edward's completed its renovation of the baseball dugouts and batting cage facility. The newly built cinder block dugouts enhance the baseball field while the additional storage areas provide much-needed space for equipment and supplies. The batting cage was updated with concrete and turf that improved the overall quality of the hitting facility.
- The university recently completed work on a 2,800-square-foot covered batting facility at Diane Daniels Softball Field. The facility is lighted and open-air with the possibility of being enclosed in the future. The batting cage features two netted areas for hitting, a large space for a variety of drills and turf for safety.
- The student-athlete weight room was given a facelift last spring. Several new pieces of Precor and functional-training equipment were added and athletic rubber flooring was installed to enhance the Hilltopper strength-training and weight room.

Athletic Excellence

- After taking nine of 13 Heartland Conference championships in 2006–2007, five teams took home conference championships in 2007–2008. Women's soccer, men's basketball, baseball, men's golf and women's golf all achieved top honors.
- Eight teams were ranked nationally during the 2007–2008 season and six teams made appearances in the national tournament with two top-three finishes. Men's golf tied for second place, and the softball team tied for third place.
- Student-athletes at St. Edward's garnered Player of the Week honors 45 times during the 2007–2008 season. Fifty-seven student-athletes received all-conference honors, with four receiving Heartland Conference Player of the Year honors and three being named Freshman of the Year. Sixteen student-athletes received all-region recognition, and seven student-athletes were all-Americans.



2nd Place

The men's golf team finished the 2007–2008 season tied for second place in the NCAA Division II National Tournament.

3rd Place

The softball team tied for third place in the NCAA Division II national tournament.

Staffing Honors

St. Edward's University coaches combined to win three Heartland Conference Coach of the Year honors during the 2007–2008 season. **Ryan Marks** (men's basketball), **Jennifer McNeil** (women's golf) and **Ryan Murphy** (men's golf) each were named coach of the year for their respective sports. McNeil and Murphy were also named GCAA South Central Regional Coaches of the Year.

Amy Coulter (softball) serves on the NCAA South Central Regional ranking committee and is chair of the Heartland Conference softball coaches. Coulter was named NFCA Regional Coach of the Year.

Sean Donahue (volleyball) serves as volleyball chair for the Heartland Conference, is a rater for the NCAA Division II top-25 poll and represents the Heartland Conference volleyball coaches on the NCAA volleyball coaches committee.

Ryan Marks (men's basketball) serves as a Heartland Conference congressman to the National Association of Basketball Coaches Division II Congress and is a member of the NCAA Division II men's basketball South Central Regional ranking committee.

Jennifer McNeil (women's golf) was an NCAA Division II representative and rater for the National Golf Coaches Association during the 2007–2008 academic year.

Melinda Terry (director of sports medicine) is president of the Southwest Athletic Trainers' Association and executive board president of the National Athletic Trainers' Association convention planning committee.

Jennifer White (women's basketball) serves on the NCAA South Central Regional ranking committee for women's basketball.

Brian Young (men's soccer) was one of three individuals to serve on the Midwest Regional ranking committee for the National Soccer Coaches Association and Adidas in 2007.

Logan Lawrence (sports information) serves on the College Sports Information Directors of America publications committee.

"The environment at St. Edward's demonstrates a lifelong commitment to achieve excellence in all aspects of my life, which helps me become an individual with the inner drive and desire to meet and reach my personal goals and values as I continue my life after St. Edward's."

Kelli Payton, '10 | Women's Basketball



FACING A FOUR-MIDABLE CHALLENGE

St. Edward's University men's basketball Head Coach **Ryan Marks** has led the Hilltoppers to three straight Heartland Conference titles and a spot in the NCAA national tournament the past three seasons. The phrases "Heartland Conference Champion" and "St. Edward's University men's basketball" have almost become synonymous. This season, the Hilltoppers will be looking for a four-peat.

"It is truly gratifying to reflect upon our team's accomplishments from this past year in the context of a single season and also in the broader perspective of the past three seasons," Marks says. "To win the Heartland Conference regular season title for a third consecutive time was really a substantial achievement. I felt like we had a bullseye on our back the entire season, and yet the players embraced the challenge of knowing that people were eager to knock us off each time we took the court."

With the departure of last year's two leading scorers in Shawn Weinstein and Daniel Pierre, the Hilltoppers will need all nine returnees, along with 10 new faces, to step up in order to defend the conference title.

"I am anxious to see what type of personality this team takes on," Marks says. "It will surely be a different feel with so many new players and the departure of a couple high-profile guys in Daniel Pierre and Shawn Weinstein, who have graduated. I do think we should be an exciting team to watch and one that has a balanced offensive attack."

In 2007–2008, the Hilltoppers made the tournament as an at-large selection. While St. Edward's has reached the postseason the past three years, the 2008–2009 team will still be seeking the first NCAA tournament victory in school history.

"As a program, we always strive to qualify for the NCAA Division II national tournament," Marks says. "Once you get there, everything else is a cherry on top. We have been unbelievably fortunate to reach that point the last three years and hope to return again."

POINT GUARDS

Senior **Taylor Land** returns after starting 58 of 60 games the past two seasons. The Highland Village, Texas, native led the team in assists (4.1 apg) and finished second in steals (1.77 spg) in 2007–2008.

"Taylor is an experienced veteran," Marks says. "He possesses great leadership ability, competitive spirit and knowledge of our system."

Also returning are juniors **Jeff Samuels**, whose role will be expanded this season, and **Ricky Masso**, who will add depth to the position.

The Hilltoppers will also add one junior college transfer and an incoming freshman. **Bobby Watkins** transfers in from Southwestern Oregon Community College and brings with him the reputation as a speed merchant. Freshman **Greg Westry** (Boca Raton HS, Fla.) joins the squad after a very successful high school career.

"Bobby was the leader and floor general for his junior college team," Marks says. "He possesses exceptional speed, advances the ball well in transition and can be a real

nuisance for opponents when he is on the defensive end. "Greg was the heart and soul of his high school team," Marks adds. "He also has a quickness that makes him dangerous on both ends of the court."

WINGS

At the two wing positions, St. Edward's will return junior **Jannik Zimmer** and senior **Kyle Wakefield**. Zimmer started 29 games last season and was one of the most dangerous three-point shooters in the Heartland Conference. Wakefield, a native of Middle Township, N.J., blossomed as a point producer last season, becoming one of the best scorers off of dribble penetration.

St. Edward's will add sophomore transfer **Jeff Miner** and junior transfer **Taylor Carr**. Miner was the Heartland Conference Co-Freshman of the Year at Montana State–Billings in 2006–2007, while Carr, a Chicago, Ill., native, arrives on the hilltop after being awarded NJCAA Division II first-team all-region honors.

"Both Jeff and Taylor will provide us with an added instant punch of offense," Marks says. "Taylor is a big wing who can post up, score off of the dribble and shoot from the perimeter. Jeff's style of play is very similar to that of Shawn Weinstein."

The Hilltoppers will also welcome three incoming freshmen wings in **Justin Monk** (South Grand Prairie HS), **Charlie Spector** (Canyon del Oro HS) and **Chase Spruiell** (Princeton HS). All three newcomers will add depth and flexibility to the team this season.

POWER FORWARDS

Junior **Cory Griffin**, who backed up Taylor Mullenax last season, has appeared in all but two games during his St. Edward's career. Sophomore **Mark Watson** will also return to provide quality minutes.

"Cory has been a regular member of the Hilltoppers rotation largely because of his tenacious rebounding and reliable post defense," Marks says. "Mark can play both forward positions. He gave the team a lift off the bench last year on numerous occasions by working the boards hard at both ends and displaying a consistent mid-range shot."

Joining the two returnees will be junior transfer **Reggie Shanks**. The Division I transfer from Nicholls State is much like Griffin in his demeanor on the court.

"Reggie has the reputation of being able to play around the goal and on the perimeter offensively," Marks says. "He will be a match-up problem for a lot of teams."

CENTERS

At the center position, the Hilltoppers will have to replace first-team all-Heartland Conference performer Daniel Pierre. Seniors **Nate Barstad** and **Taylor Mullenax** both return for their final season. Mullenax was named honorable mention all-Heartland Conference and was the third-leading scorer on the team (10.5 ppg). He was also second on the team in rebounding, bringing down 6.1 rebounds a game.

"Taylor anchors the front line and has established himself as one of the premier post players in the Heartland Conference over the past three seasons," Marks says. "He is an adept inside scorer, rebounder and post defender. He is primed

and ready for an outstanding senior season. Nate runs the floor exceptionally well and is a proven rebounder and post defender."

Freshman **James Wiseman** (Houston Strake Jesuit) will join the team and will provide depth and a physical presence. Redshirt freshman **Cameron Taggart** (Flower Mound Marcus HS/UT–Arlington) joins fellow Marcus HS alumnus Taylor Land on the hilltop and is an active rebounder.

THE SCHEDULE

The Hilltoppers open the season with their customary St. Edward's University Shootout. This year, they will host Lone Star Conference foe Texas A&M–Commerce, along with Ouachita Baptist, a team that reached the second round of the NCAA tournament in 2007–2008 with an impressive win over Florida Southern in the first round.

After that, St. Edward's will have three more games at home versus crosstown rival Concordia–Texas, Concordia–Alabama, and regional powerhouse Tarleton State.

The Hilltoppers will then experience a four-game road stretch that features games against Division I Texas A&M–Corpus Christi, Rocky Mountain Athletic Conference schools Fort Lewis and Western State, and a return trip to Tarleton State.

St. Edward's will end its nonconference slate by hosting Arkansas–Monticello and Missouri S&T in the Hilltopper Holiday Classic.

"We are playing an outstanding nonconference schedule and certainly will be battle-tested by the end of December," Marks says. "It is always tough to project, but we are either playing teams that are already established national powers or on-the-rise teams from major conferences."

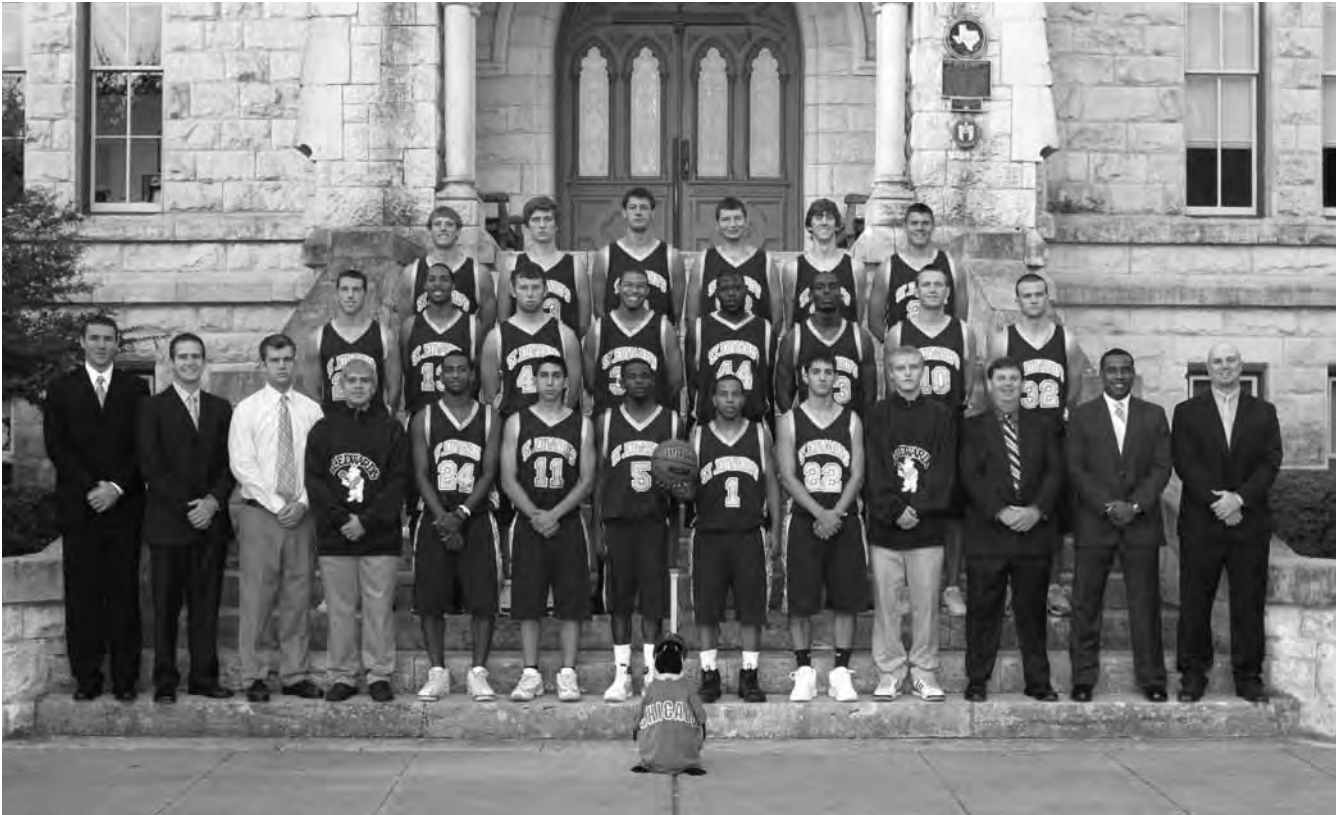
The Heartland Conference looks to be even tougher this season. The Hilltoppers won the regular season crown for the third-straight time but were knocked off by rival St. Mary's in the conference tournament championship game last season.

"My hunch is that the Heartland Conference will be much stronger this year from top to bottom," Marks says. "Now that Newman, Texas A&M–International and UT–Permian Basin are all eligible for the postseason, finishing in the top four to qualify for the conference tournament is going to be an impressive accomplishment for the teams that advance."

FINAL THOUGHTS

The Hilltoppers will rely on their depth once again, as they have numerous players that can all give quality minutes when asked. The last two seasons St. Edward's has had at least 10 players average more than 10 minutes of action per game.

"Our biggest strengths this season will be our depth and our character," Marks says. "Our ability to be successful will again hinge on the utilization of our depth to wear opponents down. We will see how quickly some of the incoming players emerge. I think we have an excellent collection of young men who are fully invested in the student-athlete experience at St. Edward's, and their accomplishments in the classroom and community will reflect that commitment."



NO.	Player	Position	Height	Weight	Year/Exp.	Hometown/Previous School
1	Bobby Watkins	G	5-6	155	Jr./TR	Henderson, Nev./SW Oregon CC
4	Nate Barstad	F	6-8	220	Sr./1L	Glasgow, Mont./Miles CC
5	Greg Westry	G	5-10	165	Fr./HS	Delray Beach, Fla./Boca Raton HS
10	Jannik Zimmer	G	6-4	180	Jr./2L	Cologne, Germany/Elisabeth-Von-Thueringen
11	Ricky Masso	G	5-11	170	Jr./1L	McAllen/UT-Pan American
13	Kyle Wakefield	G	6-3	175	Sr./1L	Middle Township, N.J./Gloucester County CC
20	Taylor Land	G	6-0	190	Sr./3L	Highland Village/Marcus HS
21	Mark Watson	F	6-6	200	So./1L	Cypress/Cy-Fair HS
22	Charlie Spector	G	5-11	160	Fr./HS	Tucson, Ariz./Canyon Del Oro HS
23	Justin Monk	G	6-4	185	Fr./HS	Grand Prairie/South Grand Prairie HS
24	Jeff Samuels	G	5-11	170	Jr./2L	Cypress/Cy-Fair HS
30	Cory Griffin	F	6-5	210	Jr./2L	San Antonio/Reagan HS
31	Chase Spruiell	G	6-6	185	Fr./HS	Princeton/Princeton HS
32	Jeff Miner	G	6-2	195	So./TR	Gresham, Ore./Montana State-Billings
33	Cameron Taggart	F	6-7	205	Fr./TR	Highland Village/UT Arlington
34	Tylor Carr	F	6-4	210	Jr./TR	Chicago, Ill./Oakton CC
42	James Wiseman	F	6-3	215	Fr./HS	Houston/Strake Jesuit HS
44	Reggie Shanks	F	6-4	205	Jr./TR	Houston/Nicholls State
52	Taylor Mullenax	F	6-7	235	Sr./3L	Beaumont/Kelly HS

Head Coach: Ryan Marks (Fifth Season, USC, '93)

Assistant Coach: Jon Havens (Second Season, Texas-San Antonio, '04)

Volunteer Assistant Coaches: Chris Crevelone (First Season, Adams State, '07), David President (First Season, UT-San Antonio, '05)

Graduate Assistant Coach: Luke Hemenover (First Season, Illinois '08)

Head Manager: Jack Dorn (Fourth Season, St. Edward's, '09)

Student Managers: Alex McAdams (First Season, St. Edward's, '12), Paul Alvarez (First Season, St. Edward's, '12)

6 MEET THE TEAM



Ryan Marks
Head Coach | Fifth Season
University of Southern California, '93

Ryan Marks enters his fifth season as head coach at St. Edward's University. During his tenure, the Hilltoppers have compiled a 74-43 record. Under Marks' tutelage, nine players have been named to the all-Heartland Conference team or received honorable mention. Two players received Heartland Conference most valuable player honors — David Lunn (2005–2006) and Shawn Weinstein (2006–2007). Last season, the Hilltoppers won their third straight Heartland Conference championship and appeared in their third-ever NCAA Division II tournament. Marks was named Heartland Conference Coach of the Year for the third straight year and was recognized as the 2007 Small College Coach of the Year by the Texas Association of Basketball Coaches.

Marks came to St. Edward's after spending three seasons as the head men's basketball coach at Southern Vermont College in Bennington, Vt. Under his direction, the Mountaineers posted a 57-29 overall record and 37-12 mark in the Great Northeast Athletic Conference. In his first season (2001–2002) at SVC, the team had a 12-game turnaround, making them the second-most-improved Division III team in the NCAA. Showing that his inaugural season was not a fluke, in 2002–2003, Marks guided SVC to its first NCAA Division III tournament appearance and first 20-win season (24-6) in school history. The Mountaineers captured the school's first-ever regular season and conference tournament championships and advanced to the second round of the NCAA tournament. That season, Southern Vermont was voted the Most Improved Division III Team in New England by the New England Basketball Coaches Association. In 2003–2004, Marks continued his winning ways by posting the school's third straight 15-plus-win season (18–11) and leading the Mountaineers to the school's first appearance in the ECAC New England championship tournament.

Marks has been a winner at every place he has coached. During the six years (1995–2000) he spent at Northern Illinois University as an assistant, he helped lead the Huskies to the 1996 NCAA Division I tournament. Prior to that, he also spent two years as an assistant at Central Missouri State University, where the Mules made the NCAA Division II tournament both seasons, including a run to the Elite Eight in 1995.

Marks also has a wealth of global basketball experience. He served as an assistant coach for the USA gold-medal-winning team in the 2001 World Maccabiah Games. He has spoken at clinics in Israel, Jordan, Nigeria and Senegal and coached players from Bulgaria, Germany, Lithuania and France.

Marks received his BA in Public Relations from the University of Southern California in 1993. While earning his degree, he spent three years as the player personnel assistant for the Los Angeles Clippers and two years as an assistant coach at Muir High School in Pasadena, Calif.



Jon Havens
Assistant Coach | Second Season
UT–San Antonio, '04

Jon Havens enters his second season as an assistant coach for the Hilltoppers. He will be involved with administrative duties, conditioning, on-floor coaching and serves as the recruiting coordinator.

He came to Austin from Allen County Community College in Iola, Kan., where he was the assistant coach for the Red Devils for the 2006–2007 season. The team finished second in the Jayhawk League Eastern Division with a 22-9 record and advanced to the NJCAA Region VI tournament. Prior to that, Havens was an assistant coach at Heartland Conference rival Incarnate Word under Al Grushkin during the 2005–2006 season.

He played basketball at Lewisville High School, where he was selected district most valuable player, first-team all-state and a McDonald's all-America nominee his senior season. He led the state in three-point shooting for three straight years.

Havens was a four-year letter winner at UT–San Antonio. He led the team in three-point shooting all four seasons and finished his career in the top five for assists, top 10 for three-point field goals made and top 30 for scoring.

Havens graduated from UT–San Antonio in 2004 with a BA in History. He plans to pursue an MA in Teaching with a Sports Management concentration at St. Edward's.



4

Nate Barstad

Senior | 6-7 | FWD/Center
Glasgow, Mont. | Glasgow HS | Miles CC

Year	GP-GS	Min-Avg	FG-A	Pct	3FG-A	Pct	FT-A	Pct	O-D-R	Avg	A	TO	BK	ST	Pts	Avg
2007-2008	30-1	363-12.1	25-50	.500	0-0	.000	12-20	.600	22-50-72	2.4	7	17	7	9	62	2.1
Total	30-1	363-12.1	25-50	.500	0-0	.000	12-20	.600	22-50-72	2.4	7	17	7	9	62	2.1



HILLTOPPER CAREER

Junior: Appeared in all 30 games, starting one; averaged 2.1 points and 2.4 rebounds per game; scored a season-high seven points in a season-opening victory over Midwestern State (11/16/07); tallied seven points and 10 rebounds in a victory over Concordia-Texas (11/20/07).

PRIOR TO ST. EDWARD'S

Played two seasons for Shawn Neary at Miles Community College; averaged 7.1 points and 4.5 rebounds per game his sophomore season; helped lead Pioneers to the regional tournament and an 18-14 record.

HIGH SCHOOL CAREER

Played three seasons for Ryan Rebsom and Charles Barstad at Glasgow High School; was named first-team all-state his senior season; was also named first-team all-conference his sophomore through senior seasons; also played football (all-conference one season) and ran track (all-conference two seasons); was a member of the G-Club National Honor Society and part of the Ground Zero Club.

PERSONAL

Major: Education

Favorite sport (besides basketball): Football and baseball

Favorite book: *Mind Gym*

Favorite athlete: Dennis Rodman

What most people don't know about me: "I could have played college football too."

Why I chose St. Edward's: "After spending all my life growing up in Montana, I told myself I was going to visit the rest of the United States. St. Edward's gave me that opportunity."

20

Taylor Land

Senior | 6-1 | Guard
Highland Village | Marcus HS

Year	GP-GS	Min-Avg	FG-A	Pct	3FG-A	Pct	FT-A	Pct	O-D-R	Avg	A	TO	BK	ST	Pts	Avg
2005-2006	30-1	325-10.8	17-60	.283	8-25	.320	22-34	.647	9-23-32	1.1	51	47	0	21	64	2.1
2006-2007	30-28	572-19.1	43-119	.361	5-37	.135	28-41	.683	13-57-70	2.3	81	55	0	45	119	4.0
2007-2008	30-30	676-22.5	46-102	.451	16-40	.400	46-68	.676	15-71-86	2.9	124	67	1	53	154	5.1
Total	90-59	1573-17.5	106-281	.377	29-102	.284	96-143	.671	37-151-188	2.1	256	169	1	119	337	3.7



HILLTOPPER CAREER

Junior: Started all 30 games; averaged 5.1 points, 2.9 rebounds and 4.1 assists per game; tied a career high with 10 assists in a victory over UT-Permian Basin (2/14/08); registered six steals in a victory over Lincoln (1/12/08); tallied 12 games with five or more assists; was named first-team academic all-district.

Sophomore: Appeared in all 30 games, starting 28; averaged 4.0 points, 2.3 rebounds and 2.7 assists per game; led the team with 81 assists; registered seven steals and 11 points in a victory over Newman (12/2/06); shot a perfect 5-of-5 from the field on his way to 11 points versus UT-Permian Basin (1/25/07); dished out a career-high 10 assists in a victory over Concordia-Texas (11/21/06).

Freshman: Appeared in all 30 games, starting one; averaged 2.1 points and shot .647 from the foul line in 10.8 minutes per game; was fourth on the team in assists (51); had a career-high 13 points versus Montana State-Billings (1/28/06); dished out a career-high seven assists in a victory over Western New Mexico (2/18/06).

HIGH SCHOOL CAREER

Played three years for Jody Bass at Marcus High School; was a McDonald's High School all-America nominee his senior season; helped the team to bi-district championship his sophomore season; also played baseball for two years.

PERSONAL

Major: Finance

Favorite sport (besides basketball): Baseball (Land is also a pitcher on the Hilltopper baseball team)

Favorite book: *Fall River Dreams*

Favorite athlete: My brother, Cooper Land

What most people don't know about me: "My grandmother called me Tater-Pie."

Why I chose St. Edward's: "I chose St. Edward's because of the quality people and quality education."

13

Kyle Wakefield

Senior | 6-3 | Guard

Middle Township, N.J. | Middle Township HS | Gloucester CC

Year	GP-GS	Min-Avg	FG-A	Pct	3FG-A	Pct	FT-A	Pct	O-D-R	Avg	A	TO	BK	ST	Pts	Avg
2007-2008	29-0	459-15.8	73-179	.408	11-26	.423	35-51	.686	10-35-45	1.6	24	35	1	18	192	6.6
Total	29-0	459-15.8	73-179	.408	11-26	.423	35-51	.686	10-35-45	1.6	24	35	1	18	192	6.6



HILLTOPPER CAREER

Junior: Appeared in 29 games; averaged 6.6 points per game; had a season-high 14 points on back-to-back games versus Oklahoma Panhandle State (2/16/08) and Texas A&M-International (2/23/08); had a season-high five assists in a victory over Fayetteville State.

PRIOR TO ST. EDWARD'S

Played two years for Rick Jackson at Gloucester County Community College; averaged 13.9 points, 4.9 rebounds and 2.6 assists per game and was named first-team all-region and honorable mention all-America his sophomore season; tallied 13 points per game and was named first-team all-region his freshman season; helped lead his team to a 48-17 record over the two seasons and a seventh place finish at the national tournament his sophomore season.

HIGH SCHOOL CAREER

Played four years for Tom Feroceo at Middle Township High School; was named first-team all-South Jersey his senior season after helping lead the team to the South Jersey State Tournament.

PERSONAL

Major: Kinesiology/Pre-Physical Therapy

Favorite sport (besides basketball): Bowling

Favorite book: The Bible

Favorite athlete: Chris Paul

What most people don't know about me: "I am living a dream."

Why I chose St. Edward's: "I chose St. Edward's primarily because of Coach Marks."

52

Taylor Mullenax

Senior | 6-7 | FWD/Center

Beaumont | Kelly HS

Year	GP-GS	Min-Avg	FG-A	Pct	3FG-A	Pct	FT-A	Pct	O-D-R	Avg	A	TO	BK	ST	Pts	Avg
2005-2006	30-2	408-13.6	32-56	.571	0-0	.000	13-24	.542	31-42-73	2.4	12	29	14	13	77	2.6
2006-2007	30-29	643-21.4	149-230	.648	0-0	.000	65-108	.602	85-114-199	6.6	33	55	19	20	363	12.1
2007-2008	30-30	694-23.1	126-230	.548	0-1	.000	63-96	.656	65-119-184	6.1	33	59	22	29	315	10.5
Total	90-61	1745-19.4	307-516	.595	0-1	.000	141-228	.618	181-275-456	5.1	78	143	55	62	755	8.4



HILLTOPPER CAREER

Junior: Started all 30 games; led the team in blocks (22), was second on the team in rebounds (6.1 rpg) and third on the team in scoring (10.5 ppg); was named honorable mention all-Heartland Conference; registered four double-doubles on the season; tallied a season-high 25 points along with 10 rebounds in a victory at Texas A&M-International (1/26/08); had 21 points on 9-of-12 shooting from the field versus Incarnate Word (2/25/08); had 16 double-figure scoring games.

Sophomore: Appeared in all 30 games, starting 29; was second on the team in scoring (12.1 ppg) and led the team in rebounding (6.6 rpg); was named first-team all-conference; was named Heartland Conference Player of the Week twice during the season; also led the team in blocks (19) and field goal percentage (.648), which was good enough for third place on the all-time list; scored a career-high 31 points, including the game-winning jumper at the buzzer versus UT-Permian Basin (1/25/07); shot 12-of-14 from the field on his way to 26 points in a victory over Concordia-Texas (11/21/06); had four double-doubles on the season; scored in double figures in 16 games.

Freshman: Appeared in all 30 games, starting two; led the team in field goal percentage (.571); was second on the team in blocks (14); averaged 2.6 points and 2.4 rebounds in 13.6 minutes per game; had a season-high five blocks in a victory over Abilene Christian (11/30/05).

HIGH SCHOOL CAREER

Played four years for James Knowles at Kelly High School; was named first-team all-state his junior and senior years; helped the team to the TAPPS 5A state championships his junior and senior seasons.

PERSONAL

Major: Marketing

Favorite sport (besides basketball): Golf

Favorite book: *Flowers for Algernon*

Favorite athlete: Tiger Woods

What most people don't know about me: "I had two pet ferrets my sophomore year of college."

Why I chose St. Edward's: "I chose St. Edward's because it provides a great degree to go along with a great basketball team. And it's in a great city."

1

Bobby Watkins

Junior | 5-6 | Guard

Henderson | Foothill HS | SW Oregon CC



PRIOR TO ST. EDWARD'S

Played two years for Trevor Hoppe at Southwestern Oregon Community College; was named honorable mention all-conference, Coach Tregs Corsair Classic Most Valuable Player, academic all-conference and academic all-America his sophomore season was a recipient of the Bill Holmes Award as the college's most outstanding student-athlete of the year; was also named to the all-freshman team his first season; was a member of Phi Theta Kappa.

HIGH SCHOOL CAREER

Played four years for Kevin Soares at Foothill High School; was named first-team all-district, the district's most valuable player, and a scholar athlete his senior season; was also named academic all-state, a scholar athlete and the district's defensive most valuable player his junior season; was a member of the National Honor Roll.

PERSONAL

Major: Sociology/Pre-Physical Therapy

Favorite sport (besides basketball): Football

Favorite book: *Michael Jordan: A Biography*

Favorite athlete: Kobe Bryant

What most people don't know about me: "I didn't start playing basketball until the seventh grade."

Why I chose St. Edward's: "I chose St. Edward's because they believe in me."

10

Jannik Zimmer

Junior | 6-4 | Guard

Cologne, Germany | Elisabeth-Von-Thüringen HS

Year	GP-GS	Min-Avg	FG-A	Pct	3FG-A	Pct	FT-A	Pct	O-D-R	Avg	A	TO	BK	ST	Pts	Avg
2006-2007	30-10	515-17.2	56-164	.341	39-123	.317	26-31	.839	10-24-34	1.1	28	44	2	15	177	5.9
2007-2008	30-29	646-21.5	73-179	.408	54-136	.397	31-42	.738	7-44-51	1.7	53	45	5	24	231	7.7
Total	60-39	1161-19.4	129-343	.375	93-259	.357	57-73	.789	17-68-85	1.4	81	89	7	39	408	6.8



HILLTOPPER CAREER

Sophomore: Appeared in all 30 games, starting 29; was fourth on the team in scoring (7.7 ppg) and second on the team in three-point shooting (54); made six shots from behind the arc on his way to tying his career high with 20 points in a victory at UT-Permian Basin (2/14/08); had eight games with three or more shots made from behind the three-point line.

Freshman: Appeared in all 30 games, starting 10; led all freshmen in scoring (5.9 points per game); was also third on the team in three-point shooting (39); scored a career-high 20 points in a double-overtime victory over Texas A&M-International (2/3/07); followed that up with a 15-point performance versus Dallas Baptist (2/8/07).

HIGH SCHOOL CAREER

Played for Elisabeth-Von-Thüringen High School; helped lead the team to an eighth-place finish at the school world championships; nominated as one of the best 24 players in Germany in his age division.

PERSONAL

Major: International Business

Favorite sport (besides basketball): Soccer and wakeboarding

Favorite book: *The Secret*

Favorite athlete: Nic Schulwitz

What most people don't know about me: "I didn't know one of my sisters until I was 15 years old."

Why I chose St. Edward's: "I chose St. Edward's because Coach Marks was willing to give me chance."

10 MEET THE TEAM

11

Ricky Masso

Junior | 5-11 | Guard

McAllen | Memorial HS | UT–Pan American

Year	GP-GS	Min-Avg	FG-A	Pct	3FG-A	Pct	FT-A	Pct	O-D-R	Avg	A	TO	BK	ST	Pts	Avg
2007–2008	5-0	8-1.6	2-2	1.000	1-1	1.000	2-3	.667	0-1-1	0.2	0	3	0	1	7	1.4
Total	5-0	8-1.6	2-2	1.000	1-1	1.000	2-3	.667	0-1-1	0.2	0	3	0	1	7	1.4



HILLTOPPER CAREER

Sophomore: Appeared in five games for the Hilltoppers; shot a perfect 2-of-2 from the field; nailed his only three-pointer versus Huston-Tillotson (1/3/08).

PRIOR TO ST. EDWARD'S

Attended UT–Pan American but did not appear in any games.

HIGH SCHOOL CAREER

Played four years for Sam Cortez at McAllen Memorial High School; was named first-team all-district and was selected to the all-defensive team, along with being named to the all-Valley all-star showcase his senior season after helping lead the team to the playoffs; was named honorable mention all-district his junior season; also participated in football; was a member of Monica's Angels Cancer Organization.

PERSONAL

Major: Business Administration

Favorite book: *The Street Lawyer*

What most people don't know about me: "I raced Motocross until I was 13."

Why I chose St. Edward's: "I chose St. Edward's because the campus and the people are great."

Favorite sport (besides basketball): Football

Favorite athlete: Baron Davis

24

Jeff Samuels

Junior | 5-11 | Guard

Cypress | Cypress-Fairbanks HS

Year	GP-GS	Min-Avg	FG-A	Pct	3FG-A	Pct	FT-A	Pct	O-D-R	Avg	A	TO	BK	ST	Pts	Avg
2006–2007	10-0	35-3.5	6-14	.429	1-2	.500	4-4	1.000	2-2-4	0.4	7	2	0	4	17	1.7
2007–2008	20-0	183-9.2	14-37	.378	6-19	.316	7-13	.538	3-8-11	0.6	36	23	1	11	41	2.1
Total	30-0	218-7.3	20-51	.392	7-21	.333	11-17	.647	5-10-15	0.5	43	25	1	15	58	1.9



HILLTOPPER CAREER

Sophomore: Appeared in 20 games; averaged 2.1 points and 1.8 assists per game; had a career-high nine points on a perfect 4-of-4 shooting night versus UT–Permian Basin (2/2/08); tallied eight points versus Northwest Missouri State (3/15/08) in the first round of the NCAA tournament; had seven assists versus Huston-Tillotson (1/3/08) and six assists at Dallas Baptist (1/7/08) in consecutive games.

Freshman: Appeared in 10 games; averaged 1.7 points per game and was a perfect 4-of-4 from the free-throw line for the season; had a career-high four points and two steals in a victory over Schreiner (12/9/06).

Freshman (Redshirt): Redshirted the season.

HIGH SCHOOL CAREER

Played four years for David Buchanan at Cypress-Fairbanks High School; was named preseason all-state honorable mention and first-team all-district his senior season; helped the team to a district runner-up finish his junior season.

PERSONAL

Major: Kinesiology

Favorite book: *Friday Night Lights*

What most people don't know about me: "I am left-footed."

Favorite sport (besides basketball): Football

Favorite athlete: Kobe Bryant

Why I chose St. Edward's: "I chose St. Edward's because I love the challenge."

30

Cory Griffin

Junior | 6-5 | Forward

San Antonio | Reagan HS

Year	GP-GS	Min-Avg	FG-A	Pct	3FG-A	Pct	FT-A	Pct	O-D-R	Avg	A	TO	BK	ST	Pts	Avg
2006–2007	28-0	487-17.4	56-97	.577	0-2	.000	42-58	.724	38-67-105	3.8	17	26	1	12	154	5.5
2007–2008	30-0	549-18.3	42-81	.519	0-3	.000	39-70	.557	45-72-117	3.9	24	24	13	9	123	4.1
Total	58-0	1036-17.9	98-178	.551	0-5	.000	81-128	.633	83-139-222	3.8	41	50	14	21	277	4.8



HILLTOPPER CAREER

Sophomore: Appeared in all 30 games; averaged 4.1 points and 3.9 rebounds per game; had a season-high 10 points in a victory over Texas A&M–Commerce (12/30/07); registered a career-high 11 rebounds versus UT–Permian Basin (2/2/08).

Freshman: Appeared in 28 games; averaged 5.5 points and 3.8 rebounds per game; was second on the team in field-goal percentage (.577); shot a perfect 6-for-6 from the field, scoring a career-high 14 points in a victory over St. Mary's (1/20/07); tallied a season-high eight rebounds in a victory over Schreiner (12/9/06); was a perfect 6-of-6 from the free-throw line in a conference championship-clinching victory over Montana State–Billings (2/24/07).

HIGH SCHOOL CAREER

Played three years for Jimmy Littleton at Reagan High School; scored 1,275 points and collected 1,023 rebounds in three seasons; helped lead his team to the state semifinals his junior season; named first-team all-state, all-region and all-district his senior season after leading his team to the regional championship; also named honorable mention all-district his junior season and second-team all-district his sophomore season; was a member of the National Honor Society and the A/B Honor Roll.

PERSONAL

Major: Kinesiology

Favorite book: *To Kill a Mockingbird*

What most people don't know about me: "I am afraid of heights."

Why I chose St. Edward's: "I established a relationship immediately with Coach Marks and knew that he would utilize my abilities in the best way."

Favorite sport (besides basketball): Golf

Favorite athlete: My father, Paul Griffin

34

Taylor Carr

Junior | 6-4 | Forward

Chicago, Ill. | Taft HS | Oakton CC



PRIOR TO ST. EDWARD'S

Played two seasons for Steve Pratt at Oakton Community College; led the team in scoring, averaging 19.6 points, 7.1 rebounds and 2.3 steals per game his sophomore season; was named first-team all-conference and first-team all-region; was selected as a top-20 student in his conference for posting a 3.0 GPA or better.

HIGH SCHOOL CAREER

Played two seasons for Nishi Bhyashi at Chicago Taft High School; averaged 10 points and four rebounds per game his junior season; tallied 23 points and six rebounds per game his senior season; was selected first-team all-conference and appeared in the Illinois South vs. West all-star game his senior season.

PERSONAL

Major: Psychology

Favorite book: *Driven From Within*

What most people don't know about me: "I have a passion to be a preacher."

Why I chose St. Edward's: "I chose St. Edward's because of the people and the atmosphere."

Favorite sport (besides basketball): Football

Favorite athlete: Gilbert Arenas

44

Reggie Shanks

Junior | 6-4 | Forward

Houston | Alief Elsik HS | Nicholls State



PRIOR TO ST. EDWARD'S

Played two seasons for JP Piper at Nicholls State; appeared in 46 games during his two seasons; averaged 1.5 points per game his freshman season while averaging 10.6 minutes a game; tallied 50 rebounds, 17 assists and 10 steals in 28 games, while gaining playing time against Ole Miss and Washington.

HIGH SCHOOL CAREER

Played four years for Jerald Hartfield at Alief Elsik High School; was named first-team all-district, third-team all-state and a McDonald's all-America nominee, while averaging 18.6 points, 11.0 rebounds and four assists per game his senior season; helped lead his team to a combined 63-11 record his junior and senior seasons; named first-team all-district his junior season and the district's newcomer of the year his sophomore season; also helped lead his team to playoff appearances during three of his four seasons; was named a Texas Scholar honor student.

PERSONAL

Major: Business Administration

Favorite book: The Bible

What most people don't know about me: "I am a shy person. I get nervous talking in groups."

Why I chose St. Edward's: "St. Edward's has great academics and the people there, along with Austin, are accepting and warm. The coaching staff is also concerned with my academics."

Favorite sport (besides basketball): Softball

Favorite athlete: LeBron James

21

Mark Watson

Sophomore | 6-6 | Fwd/Center

Cypress | Cypress-Fairbanks HS

Year	GP-GS	Min-Avg	FG-A	Pct	3FG-A	Pct	FT-A	Pct	O-D-R	Avg	A	TO	BK	ST	Pts	Avg
2007-2008	15-0	49-3.3	8-11	.727	0-0	.000	4-6	.667	5-9-14	0.9	4	6	3	2	20	1.3
Total	15-0	49-3.3	8-11	.727	0-0	.000	4-6	.667	5-9-14	0.9	4	6	3	2	20	1.3



HILLTOPPER CAREER

Freshman: Appeared in 15 games; scored a career-high eight points and pulled down five rebounds in a victory over Huston-Tillotson (1/3/08); registered a career-high six rebounds versus Wingate (12/1/07).

Freshman (Redshirt): Redshirted the season.

HIGH SCHOOL CAREER

Played two years at Cypress-Fairbanks High School; averaged a double-double in both his junior and senior seasons; was named first-team all-district his senior season and second-team all-district his junior season; led the district in rebounding both seasons.

PERSONAL

Major: Business Administration

Favorite book: *The Da Vinci Code*

What most people don't know about me: "I am half Finnish. My mom is from Finland."

Why I chose St. Edward's: "I chose St. Edward's because it is a great school, has a great team, and is in a great city."

Favorite sport (besides basketball): Football

Favorite athlete: Michael Jordan

12 MEET THE TEAM

32

Jeff Miner

Sophomore | 6-2 | Guard

Gresham, Ore. | Barlow HS | Montana State—Billings



PRIOR TO ST. EDWARD'S

Played one season for Craig Carse at Montana State—Billings; played in 19 games, starting 16 for the Yellowjackets his freshman season; averaged a team-leading 16.0 points per game and shot a team-best 69 three-pointers; scored a career-high 29 points versus Dallas Baptist; was named first-team all—Heartland Conference and Heartland Conference Co-Freshman of the Year; played the first five games of the season his sophomore season before taking a medical redshirt.

HIGH SCHOOL CAREER

Played three years for Tom Johnson at Barlow High School; was named Mt. Hood Conference Player of the Year, first-team all-conference and second-team all-state his senior season after averaging 23.8 points (3rd in the state) and 4.7 rebounds per game; helped lead his team to conference championships all three seasons.

PERSONAL

Major: Finance

Favorite book: *The Last Shot*

What most people don't know about me: "I am a voracious reader."

Why I chose St. Edward's: "Good basketball, good business, good city."

Favorite sport (besides basketball): Golf

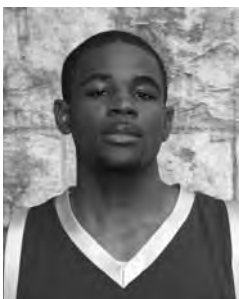
Favorite athlete: Josh Hamilton

5

Greg Westry

Freshman | 5-10 | Guard

Delray Beach, Fla. | Boca Raton HS



HIGH SCHOOL CAREER

Played three years for Manny Bloom at Boca Raton High School; averaged 15.0 points, 5.0 assists and 2.3 steals his junior season and was named first-team all-county, first-team all-conference and honorable mention all-state; was also named first-team all-county, first-team all-conference and honorable mention all-state his senior season after helping lead his team to the state playoffs.

PERSONAL

Major: Undeclared

Favorite book: *Beyond Basketball: Coach K's Keywords for Success*

What most people don't know about me: "I am highly involved in church activities."

Why I chose St. Edward's: "The students and staff at St. Edward's made me feel really comfortable."

Favorite sport (besides basketball): Football

Favorite athlete: Allen Iverson

22

Charlie Spector

Freshman | 5-11 | Guard

Tucson, Ariz. | Canyon del Oro HS



HIGH SCHOOL CAREER

Played four years for Jon Kimberlin at Canyon del Oro High School; was named first-team all-region, regional most valuable player, first-team all—Southern Arizona, honorable mention all-state and the team's most valuable player his senior season after averaging 20.4 points per game; was also named first-team all—Sonoran Region and third-team all-city his junior season; was named second-team all—Sonoran Region his sophomore season; holds school record for career-made three-pointers and three pointers made in a season; helped lead team to back-to-back regional championships his junior and senior seasons; won the state of Arizona's three-point contest; was a member of the National Honor Society and the Student Advisory Club.

PERSONAL

Major: Business Administration

Favorite book: *The Da Vinci Code*

What most people don't know about me: "I am Jewish and Mexican."

Why I chose St. Edward's: "St. Edward's has a great basketball program, great academics and is in a great city."

Favorite sport (besides basketball): Baseball

Favorite athlete: Allen Iverson

23

Justin Monk

Freshman | 6-4 | Guard

Grand Prairie | South Grand Prairie HS



HIGH SCHOOL CAREER

Played four years for Scott Parlin at South Grand Prairie High School; was named first-team all-district, the district's most valuable player, first-team all-region and all-tournament at the Mansfield Classic, Mansfield Holiday Tournament and Wildcat Classic his senior season; averaged 19.8 points, 10 rebounds, six assists and three steals per game his senior season; averaged 13 points and eight rebounds a game his junior season and helped lead his team to a district title; helped lead his team to the state playoffs his sophomore through senior seasons; was a member of Ready-Set-Teach.

PERSONAL

Major: Kinesiology

Favorite book: *Roll of Thunder, Hear My Cry*

Favorite sport (besides basketball): Football

Favorite athlete: Kobe Bryant

What most people don't know about me: "I am a pretty good artist."

Why I chose St. Edward's: "I chose St. Edward's because it is a great academic institution and I love the atmosphere."

31

Chase Spruiell

Freshman | 6-6 | Forward

Princeton | Princeton HS



HIGH SCHOOL CAREER

Played four years for Robert Erger at Princeton High School; was named first-team all-district, first-team all-region, first-team all-state and the district's most valuable player his junior and senior seasons where he averaged more than 20 points and nine rebounds a game; was also named first-team all-district and the district's offensive player of the year his sophomore season; was selected as most valuable player of the Durant, Okla., Tourney and the McKinney Tournament his senior season and the most valuable player of the Quinlan Ford Tournament his junior season; helped lead his team to the state playoffs all four seasons; also competed in cross country and tennis; was a member of the Dairy Team, Future Farmers of America and Student Council; was on the honor roll for four years.

PERSONAL

Major: Communication

Favorite book: *Catcher in the Rye*

Favorite sport (besides basketball): Tennis

Favorite athlete: Roger Federer

Favorite professional sports team: Dallas Mavericks

Why I chose St. Edward's: "It is in Austin, where there is music on every corner. The coaches are very interesting, and I love the way they run the team. The players were very polite and seemed very intelligent when I visited."

33

Cameron Taggart

Freshman | 6-7 | Forward

Highland Village | Marcus HS



PRIOR TO ST. EDWARD'S

Attended UT-Arlington but did not participate in basketball.

HIGH SCHOOL CAREER

Played two years for Jody Bass at Flower Mound Marcus High School; was named honorable mention all-district his senior season; helped lead his team to the playoffs his junior and senior seasons; was a member of the English Honor Society.

PERSONAL

Major: Business Administration

Favorite sport (besides basketball): Football

Favorite book: *I Am America (And So Can You!)*

Favorite athlete: Dirk Nowitzki

What most people don't know about me: "I play the drums and guitar."

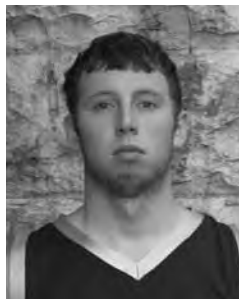
Why I chose St. Edward's: "I chose St. Edward's because of its location."

42

James Wiseman

Freshman | 6-3 | Forward

Houston | Strake Jesuit HS



HIGH SCHOOL CAREER

Played four years for Wayne Jones at Houston Strake Jesuit High School; was named honorable mention all-district his senior season after helping the team to a district championship; also helped his team to the playoffs his junior season; was a member of the National Honor Society and Teens in the Community; was on the honor roll his junior and senior seasons.

PERSONAL

Major: Business Administration

Favorite sport (besides basketball): Football

Favorite book: *The Great Gatsby*

Favorite athlete: Tim Tebow

What most people don't know about me: "I have three younger sisters."

Why I chose St. Edward's: "I chose St. Edward's because it seemed like the right fit."

14 2007-2008 YEAR IN REVIEW

Season Game Results and Leaders

DATE	TIME	OPPONENT	SCORE	ATTEND	HIGH POINTS	HIGH REBOUNDS
11/16/07	8 p.m.	1-MIDWESTERN STATE	W 79-76	462	(15) Daniel Pierre	(10) Daniel Pierre, (15) Shawn Weinstein
11/17/07	8 p.m.	1-FORT LEWIS	W 84-77	521	(29) Daniel Pierre	(11) Daniel Pierre
11/20/07	8 p.m.	CONCORDIA-TEXAS	W 88-69	213	(13) Jannik Zimmer	(10) Nate Barsted
11/26/07	8 p.m.	at Tarleton State	64-73 L	1658	(16) Shawn Weinstein	(9) Taylor Mullenax
11/30/07	6 p.m.	2-vs. Fayetteville State	W 83-72	250	(16) Shawn Weinstein	(4) Taylor Land
12/1/07	8 p.m.	2-at Wingate	53-78 L	375	(10) Kyle Wakefield	(7) Taylor Land
12/7/07	7:30 p.m.	HOUSTON BAPTIST	99-104 LOT	475	(21) Shawn Weinstein	(9) Taylor Mullenax
12/15/08	8 p.m.	at East Central	W 75-68	700	(12) Daniel Pierre	(10) Daniel Pierre
12/29/07	3:30 p.m.	3-TARLETON STATE	58-72 L	212	(19) Shawn Weinstein	(7) Taylor Mullenax
12/30/07	3:30 p.m.	3-TEXAS A&M-COMMERCE	W 100-92	398	(28) Shawn Weinstein	(9) Daniel Pierre
1/3/08	7:30 p.m.	HUSTON-TILLOTSON	W 113-81	249	(24) Shawn Weinstein	(8) Taylor Mullenax
1/7/08	7 p.m.	*at Dallas Baptist	W 93-85	250	(21) Shawn Weinstein	(6) Nate Barsted
1/10/08	8 p.m.	*NEWMAN	W 81-67	478	(19) Shawn Weinstein	(9) Daniel Pierre
1/12/08	5 p.m.	*LINCOLN	W 87-70	498	(14) Shawn Weinstein	(9) Daniel Pierre
1/17/08	8 p.m.	*ST. MARY'S	W 71-56	688	(12) Daniel Pierre	(11) Taylor Mullenax
1/21/08	7:30 p.m.	*DALLAS BAPTIST	W 77-69	378	(25) Daniel Pierre	(12) Daniel Pierre
1/24/08	8 p.m.	*at Incarnate Word	63-68 LOT	468	(16) Daniel Pierre	(9) Daniel Pierre
1/26/08	7:30 p.m.	at Texas A&M-International	W 93-81	465	(25) Taylor Mullenax	(10) Daniel Pierre, (10) Taylor Mullenax
1/31/08	8 p.m.	*OKLA PANHANDLE STATE	W 77-67	488	(18) Shawn Weinstein	(8) Daniel Pierre
2/2/08	8 p.m.	UT-PERMIAN BASIN	W 74-71	438	(17) Taylor Mullenax	(12) Taylor Mullenax, (12) Daniel Pierre
2/9/08	7:30 p.m.	*at St. Mary's	W 59-58	800	(20) Shawn Weinstein	(8) Cory Griffin
2/14/08	7:30 p.m.	at UT-Permian Basin	W 101-91		(25) Shawn Weinstein	(6) Taylor Mullenax, (6) Daniel Pierre
2/16/08	8 p.m.	*at Oklahoma Panhandle State	W 69-58	581	(14) Shawn Weinstein	(12) Taylor Mullenax, (14) Kyle Wakefield
2/23/08	7:30 p.m.	TEXAS A&M-INTERNATIONAL	W 67-60	788	(14) Taylor Mullenax	(12) Taylor Mullenax, (14) Kyle Wakefield
2/25/08	8 p.m.	*INCARNATE WORD	W 76-67	438	(21) Taylor Mullenax	(6) Taylor Land
2/28/08	7:30 p.m.	*at Lincoln	W 77-68	123	(15) Daniel Pierre	(9) Daniel Pierre
3/1/08	8 p.m.	at Newman	W 80-66	357	(28) Shawn Weinstein	(9) Daniel Pierre
3/7/08	5 p.m.	4-vs. Dallas Baptist	WOT 103-93	175	(25) Daniel Pierre	(6) Taylor Mullenax, (6) Daniel Pierre
3/8/08	5:30 p.m.	4-vs. St. Mary's	WOT 79-79 LOT	318	(13) Daniel Pierre	(13) Daniel Pierre
3/15/08	2:30 p.m.	5-vs. NW Missouri State	48-72 L	456	(14) Dian Ivanov	(7) Taylor Mullenax

1 — St. Edward's University Shootout, Austin
2 — OrthoCarolina Classic, Wingate, N.C.

3 — Hilltopper Holiday Classic, Austin
4 — Heartland Conference Tournament, Denton

5 — NCAA Division II South Central Regional, Stephenville
* — Conference game

2007-2008 Overall Individual Statistics

##	Player	GP	GS	Min	Avg	FG	FGA	Pct	3FG	FGA	Pct	FT	FTA	Pct	Off	Def	Tot	Avg	PF	FO	A	TO	Blk	Stl	Pts	Avg
11	Shawn Weinstein	30	30	798	26.6	146	310	.471	69	164	.421	106	140	.757	17	50	67	2.2	67	2	79	69	4	56	467	15.6
04	Daniel Pierre	29	29	764	26.3	143	218	.656	0	0	.000	104	201	.517	99	122	221	7.6	70	0	33	71	8	30	390	13.4
52	Taylor Mullenax	30	30	694	23.1	126	230	.548	0	1	.000	63	96	.656	65	119	184	6.1	94	4	33	59	22	29	315	10.5
10	Jannik Zimmer	30	29	646	21.5	73	179	.408	54	136	.397	31	42	.738	7	44	51	1.7	59	1	53	45	5	24	231	7.7
13	Kyle Wakefield	29	0	459	15.8	73	179	.408	11	26	.423	35	51	.686	10	35	45	1.6	44	0	24	35	1	18	192	6.6
23	Dian Ivanov	28	0	461	16.5	62	138	.449	37	93	.398	13	21	.619	7	28	35	1.3	49	0	28	56	1	15	174	6.2
20	Taylor Land	30	30	676	22.5	46	102	.451	16	40	.400	46	68	.676	15	71	86	2.9	78	5	124	67	1	53	154	5.1
22	Michael Moss	28	0	371	13.3	43	89	.483	15	35	.429	33	46	.717	16	50	66	2.4	47	0	48	48	3	28	134	4.8
30	Cory Griffin	30	0	549	18.3	42	81	.519	0	3	.000	39	70	.557	45	72	117	3.9	67	0	24	24	13	9	123	4.1
31	Andrew Reinking	5	0	16	3.2	7	8	.875	1	1	1.000	3	3	1.000	1	0	1	0.2	5	0	1	4	0	2	18	3.6
05	Floyd Daniels	7	0	61	8.7	6	17	.353	4	8	.500	2	5	.400	1	5	6	0.9	7	0	3	7	0	6	18	2.6
34	Nate Barsted	30	1	363	12.1	25	50	.500	0	0	.000	12	20	.600	22	50	72	2.4	29	0	7	17	7	9	62	2.1
24	Jeff Samuels	20	0	183	9.2	14	37	.378	6	19	.316	7	13	.538	3	8	11	0.6	31	0	36	23	1	11	41	2.1
01	Ricky Masso	5	0	8	1.6	2	2	1.000	1	1	1.000	2	3	.667	0	1	1	0.2	1	0	0	3	0	1	7	1.4
21	Mark Watson	15	0	49	3.3	8	11	.727	0	0	.000	4	6	.667	5	9	14	0.9	11	0	4	6	3	2	20	1.3
32	Andrew Nagel	23	1	44	1.9	4	17	.235	2	11	.182	4	6	.667	2	7	9	0.4	4	0	0	2	0	1	14	0.6
55	Will Tullos	4	0	8	2.0	1	1	1.000	0	0	.000	0	0	.000	0	2	2	0.5	4	0	1	4	0	0	2	0.5
TM	TEAM.														36	36	72	2.4	1			4				
	Total.	30				821	1669	.492	216	538	.401	504	791	.637	351	709	1060	35.3	668	12	498	544	69	294	2362	78.7
	Opponents	30				765	1684	.454	177	502	.353	501	730	.686	327	645	972	32.4	677	-	404	533	74	268	2208	73.6

Overall Team Statistics

Team Statistics	St. Edward's	OPP	Team Statistics	St. Edward's	OPP
SCORING	2362	2208	TURNOVERS	544	533
Points per game	78.7	73.6	Turnovers per game	18.1	17.8
Scoring margin	+5.1	—	Turnover margin	-0.4	—
FIELD GOALS-ATT	821-1669	765-1684	Assist/turnover ratio	0.9	0.8
Field goal pct	.492	.454	STEALS	294	268
3-POINT FG-ATT	216-538	177-502	Steals per game	9.8	8.9
3-point FG pct	.401	.353	BLOCKS	69	74
3-pt FG made per game	7.2	5.9	Blocks per game	2.3	2.5
FREE THROWS-ATT	504-791	501-730	WINNING STREAK	0	—
Free throw pct	.637	.686	Home win streak	10	—
REBOUNDS	1060	972	ATTENDANCE	6724	6976
Rebounds per game	35.3	32.4	Home games-Avg/game	15-448	11-525
Rebounding margin	+2.9	—	Neutral site-Avg/game	4-300	
ASSISTS	498	404			
Assists per game	16.6	13.5			

DEADBALL REBOUNDS	OFF	DEF	TOTAL		
St. Edward's	134	7	141		
Opponents	104	4	108		
SCORE BY PERIODS	1st	2nd	OT	OT2	Total
St. Edward's	1083	1220	31	28	2362
Opponents	1039	1101	45	23	2208
ALL GAMES	23-7	13-2	8-3	2-2	
CONFERENCE	9-1	5-0	4-1	0-0	
NON-CONFERENCE	14-6	8-2	4-2	2-2	
RECORD	OVERALL	HOME	AWAY	NEUTRAL	
ALL GAMES	23-7	13-2	8-3	2-2	
CONFERENCE	9-1	5-0	4-1	0-0	
NON-CONFERENCE	14-6	8-2	4-2	2-2	
ATTENDANCE SUMMARY	GAMES	TOTALS	AVG/GAME	NEUTRAL	
ALL GAMES	23-7	13-2	8-3	2-2	
CONFERENCE	9-1	5-0	4-1	0-0	
NON-CONFERENCE	14-6	8-2	4-2	2-2	

NCAA Honors List

Player	Year(s)
ALL-AMERICA	
<i>First Team</i>	
Jimmy Wheeler	1993-1994
<i>Third Team</i>	
DeNell Davis:	1986-1987
<i>Honorable Mention</i>	
Joe Beck	1956-1957
Jim Board	1960-1961
Jim O'Keefe	1960-1961
DeNell Davis	1985-1986
Jay Lee Hobbs	1989-1990
Jimmy Wheeler	1992-1994
Donnie Wynn	1992-1993
Brandon Alexander	1995-1996
<i>Academic</i>	
DeNell Davis	1986-1987
<i>Catholic</i>	
Jim O'Keefe	1960-1962
Dave Eckstein	1961-1962
John Walls	1965-1966
<i>Jewish</i>	
Shawn Weinstein	2006-2008
ALL-DISTRICT	
<i>First Team</i>	
DeNell Davis	1983-1984 1985-1987
Gus Benson	1984-1985
Jay Lee Hobbs	1987-1990
Marcus Bolden	1988-1989
Jimmy Wheeler	1991-1993
Donnie Wynn	1992-1993
<i>Second Team</i>	
Ronnie Smith	1985-1986
<i>Honorable Mention</i>	
Don Loobeck	1979-1980
James Johnson	1986-1987
Ronnie Smith	1986-1987
<i>Most Valuable Player</i>	
DeNell Davis	1986-1987
<i>Coach of the Year</i>	
Tom Pate	1985-1986
Ryan Marks	2006-2007
(Texas Small College Coach of the Year)	
<i>Academic</i>	
Taylor Land	2007-2008
ALL-CONFERENCE	
<i>First Team</i>	
Ed Neu	1950-1952
Bob Bella	1951-1952
Jack Hellett	1952-1954
Jim Krider	1953-1955
Ron Bella	1955-1956
Wilber Kohnle	1955-1956, 1957-1959
Barry Sullivan	1955-1956
Joe Beck	1956-1958
Jim Board	1959-1961
Jim O'Keefe	1959-1962
Dave Eckstein	1960-1962
Paul McDermott	1962-1965
John Schneider	1962-1964
Phil White	1962-1964
Mike Otolski	1963-1967
Mike Canfield	1964-1968
John Walls	1965-1966
John Wells	1966-1970
Bob Beck	1967-1968, 1969-1971
Howard Scott	1967-1968, 1969-1970
Mike Seale	1967-1968, 1969-1970
Al Priestley	1968-1969, 1971-1972
Zembra Everett	1970-1974
Bob Lucash	1970-1972
John Minne	1970-1972
Mike Reilly	1970-1971
Mike Skaer	1970-1971
Zembra Everett	1973-1974

Allen Zaiontz	1978-1979
Don Loobeck	1979-1980
Marcus Jones	1981-1982
Jimmy Wright	1981-1982
Larry Kruse	1982-1983
DeNell Davis	1983-1984, 1985-1987
James Johnson	1986-1987
Jay Lee Hobbs	1987-1990
Dwight Whittington	1987-1988
Marcus Bolden	1988-1989
Chris Robinson	1989-1990
Jason Harden	1990-1991
Jimmy Wheeler	1991-1994
Donnie Wynn	1992-1994
Chad Townsend	1994-1995
Brandon Alexander	1995-1997
Jelani Gibson	1997-1998
Bradley Burdick	1999-2001
Rhonney Greene	1998-2000
Ben Lyman	1998-2001
Lachlan Teasdale	1999-2001
David Lunn	2005-2006
Taylor Mullenax	2006-2007
Shawn Weinstein	2006-2008
Daniel Pierre	2007-2008
<i>Second Team</i>	
Albert Popp	1955-1956
Ron Latosinski	1956-1957
DeNell Davis	1982-1983
Gus Benson	1983-1985
Lonnie Turner	1984-1985
James Johnson	1985-1986
Ronnie Smith	1985-1987
Lachlan Teasdale	1999-2000
Bradley Burdick	2001-2002
Lawrence Ramsey	2002-2003
Chris Smith	2004-2005
Daniel Pierre	2005-2006
<i>Honorable Mention</i>	
Ron Bella	1954-1955
Ron Latosinski	1954-1956
Joe Pfister	1954-1955
Albert Popp	1954-1955
William Kohnle	1955-1956
Barry Sullivan	1955-1956
Greg Moore	1973-1974
Jerry Farias	1984-1985
Leroy Nicholas	1984-1985
Lonnie Turner	1985-1986
Dwight Whittington	1986-1987
Mike Parks	1999-2000
Cyrus Russell	2001-2003
Melvin Miller	2002-2003
Sean Cole	2004-2005
Louis Martinez	2004-2005
Shawn Weinstein	2005-2006
Chavon Farmer	2005-2007
Cornelius Gilleylen	2006-2007
Taylor Mullenax	2007-2008
<i>Most Valuable Player</i>	
Zembra Everett	1973-1974
DeNell Davis	1985-1987
Jimmy Wheeler	1993-1994
David Lunn	2005-2006
Shawn Weinstein	2006-2007
<i>Newcomer of the Year</i>	
Chad Townsend	1994-1995
David Lunn	2005-2006
<i>Defensive Player of the Year</i>	
Cornelius Gilleylen	2006-2007
<i>Freshman of the Year</i>	
Rod Gordon	1987-1988
Brandon Alexander	1994-1995
Greg Brown	1996-1997
<i>Coach of the Year</i>	
Tom Pate	1985-1986
	1993-1994
Ryan Marks	2005-2008
Academic All-America	
DeNell Davis	1986-1987

Coaches

Name	Record	Pct.
Ed Norris	229-157	.593
Tom Pate	218-242	.474
Joe Beck	102-110	.481
Ryan Marks	74-43	.632
Dan Montgomery	59-62	.488
Mike Jones	52-110	.321
Tim Walker	37-64	.366
Jack Meagher	21-7	.750
Edmund Woeber	16-7	.696
Rick Starzecki	8-19	.296
Julius Jones	6-27	.182
Matt Gouze	5-25	.167

All-Time Record Against

Team	Record	Streak
Abilene Christian	9-21	L1
Alabama-Huntsville	1-1	W1
Alaska-Fairbanks	1-0	W1
Allen Military Academy	1-0	W1
Ambassador	0-1	L1
Angelo State	2-7	L7
Arkansas-Monticello	0-1	L1
Austin CC	2-1	L1
Austin College	14-8	W5
Azusa Pacific	1-0	W1
Barry	0-1	L1
Baylor	0-2	L2
Baylor (Freshmen)	2-0	W2
Bellarmine	1-1	W1
Benedictine	1-0	W1
Bishop	1-1	W1
Blinn	2-0	W2
Brooke Medical Center	1-1	W1
Cameron	1-5	W1
Camp Travis All-Stars	0-1	L1
Centenary	0-1	L1
Central Arkansas	2-1	W1
Central Indiana	0-2	L2
Central Missouri	1-2	L1
Central Oklahoma	0-1	L1
Chadron State	0-2	L2
Clinch Valley	1-0	W1
Concordia-Texas	29-16	W3
Dallas Baptist	9-3	W7
Daniel Baker	9-1	W8
DePaul	0-1	L1
Dillard	1-0	W1
Drury	1-10	L10
East Central	1-3	W1
East Texas Baptist	35-38	W3
Eastern Illinois	1-0	W1
Eastern New Mexico	1-1	W1
Fayetteville State	1-0	W1
Fort Lewis	1-0	W1
Good Gulf	1-1	L1
Grubbs Vocational	2-0	W2
Gulf Coast-British Columbia	1-0	W1
Hardin-Simmons	3-18	W3
Harding	0-3	L3
Harris-Stowe	1-0	W1
Hawaii-Hilo	1-0	W1
Henderson State	0-1	L1
Houston Baptist	11-13	L6
Houston Elks	0-1	L1
Houston KC	0-1	L1
Houston Triangles	3-0	W3
Howard Payne	17-38	L1
Huston-Tillotson	54-18	W4
Incarnate Word	18-23	W1
IUPUI	0-1	L1
Joseph's Man's Shop	2-0	W2
Kelly Field	0-1	L1
Lamar	0-3	L3
Langston	1-0	W1
LeTourneau	13-7	W5
Lincoln	9-8	W6
Loyola-Louisiana	0-1	L1
Lubbock Christian	6-6	L4
Lynn	0-1	L1
Mary Hardin-Baylor	26-12	W2
Mawan	1-1	L1
McMurry	6-19	W3
McNeese State	1-3	L2
Midwestern State	7-16	W1
Missouri-S&T	2-1	W1

Missouri Southern State	0-2	L2
Montana State-Billings	4-3	W2
Mount Mercy	1-0	W1
National Christian	1-0	W1
Newman	3-0	W3
New Mexico Highlands	1-2	W1
North Central-Illinois	1-0	W1
North Texas	0-5	L5
Northwest Missouri State	0-1	L1
Northwood-Texas	7-0	W7
Norwich	1-0	W1
Oklahoma Christian	0-4	L4
Oklahoma City	0-1	L1
Oklahoma Panhandle State	5-7	W2
Ouachita Baptist	0-5	L5
Our Lady of the Lake	3-1	W2
Paul Quinn	4-4	W3
Pittsburg State	0-1	L1
Prairie View A&M	3-3	W2
Rice	0-2	L2
Rockhurst	1-9	L9
Rochester	1-1	L1
Rusk Institute	1-0	W1
Sam Houston State	9-16	L7
San Antonio College	2-0	W2
San Antonio Independents	1-0	W1
Schreiner	17-17	W3
Simmons	0-5	L5
Southeastern Oklahoma State	3-3	L2
Southern Arkansas	1-2	L1
Southern Illinois-Edwardsville	0-1	L1
Southern Methodist	0-1	L1
Southern Nazarene	1-2	L1
Southwest Assemblies of God	2-0	W2
Southwest Baptist	0-2	L2
Southwestern	61-58	L5
Southwestern Oklahoma State	0-1	L1
Stephen F. Austin	4-24	L7
St. Anthony's	0-2	L2
St. Francis-Illinois	0-1	L1
St. Mary's	48-86	L1
St. Thomas-Texas	29-1	W1
St. Thomas-Minnesota	0-1	L1
St. Xavier	1-0	W1
Sul Ross State	11-3	W4
Tarleton State	36-21	L5
Temple College	4-0	W4
Texas A&M	0-1	L1
Texas A&M-Commerce	2-10	W1
Texas A&M-Corpus Christi	17-11	W2
Texas A&M-International	4-0	W4
Texas A&M-Kingsville	25-37	L5
Texas Christian	0-2	L2
Texas Lutheran	59-55	W4
Texas Southern	0-5	L5
Texas State	14-38	W1
Texas Wesleyan	46-56	L1
Trinity	20-15	W1
Tulane	1-0	W1
Universidad de las Americas	2-0	W2
University of Dallas	9-2	W1
UT-Austin	0-3	L3
UT-Arlington	0-6	L6
UT Freshman	2-3	L2
UT-Pan American	16-16	L1
UT-Permian Basin	6-0	W6
UT-San Antonio	1-1	W1
Victoria College	2-0	W2
Wayland Baptist	4-7	L1
West Texas A&M	1-1	W1
Western New Mexico	6-1	W5
William Carey	1-0	W1
Wingate	0-1	L1
Wisconsin-Eau Claire	1-0	W1

16 HISTORY & RECORDS

Team Game Records

Points Scored

129	vs. Houston Baptist, 2/1/97
129	vs. SW Assemblies of God, 1/14/80
125	vs. SW Assemblies of God, 11/29/79
123	vs. Texas Lutheran, 2/26/94
121	at Texas Lutheran, 2/9/94
119	at Concordia-Texas, 12/12/92
118	vs. East Texas Baptist, 1/26/85
117	vs. Concordia-Texas, 11/20/85
115	at Huston-Tillotson, 12/12/94
115	vs. Texas Wesleyan, 1/18/64

Field Goals Made

55	vs. SW Assemblies of God, 11/29/79
50	vs. East Texas Baptist, 1/26/85
49	vs. Texas Wesleyan, 2/25/93
48	vs. Concordia-Texas, 11/20/85
47	vs. Concordia-Texas, 2/3/87
46	vs. Concordia-Texas, 12/1/87
45	vs. Lincoln, 11/26/99
45	vs. Texas Lutheran, 2/26/94
45	at Concordia-Texas, 12/12/92
44	vs. Huston-Tillotson, 1/3/08

Field Goals Attempted

85	vs. Angelo State, 11/23/98
84	vs. Cameron, 11/27/99
81	vs. Midwestern State, 12/6/93
81	vs. St. Thomas, 11/24/56
80	vs. Texas Lutheran, 1/15/00
78	at Montana State-Billings, 1/28/06
78	vs. Texas Lutheran, 12/11/00
78	vs. Univ. de las Americas, 11/16/87
77	Three times

Field Goal Percentage

.733	vs. East Texas Baptist, 1981
.724	at St. Mary's, 1/28/95
.714	vs. Lubbock Christian, 1/22/90
.696	at UT-Permian Basin, 2/14/08
.696	vs. Southwestern, 12/2/85
.687	vs. East Texas Baptist, 2/21/86
.680	vs. Texas A&M-Kingsville, 12/11/83
.673	vs. Southwestern, 1/25/89
.660	vs. Mary Hardin-Baylor, 2/13/93
.659	vs. St. Mary's, 1/17/08

Field Goals Made

55	vs. SW Assemblies of God, 11/29/79
50	vs. East Texas Baptist, 1/26/85
49	vs. Texas Wesleyan, 2/25/93
48	vs. Concordia-Texas, 11/20/85
47	vs. Concordia-Texas, 2/3/87
46	vs. Concordia-Texas, 12/1/87
45	vs. Lincoln, 11/26/99
45	vs. Texas Lutheran, 2/26/94
45	at Concordia-Texas, 12/12/92
44	vs. Huston-Tillotson, 1/3/08

Three-Point Field Goals Made

15	vs. Cameron, 11/27/99
15	vs. Texas Lutheran, 1/15/00
14	vs. Western New Mexico, 2/18/06
14	vs. Texas Lutheran, 2/2/00
14	at Drury, 2/10/01
14	vs. Concordia-Texas, 2/12/90
13	vs. Concordia-Texas, 1/30/99
13	vs. Norwich, 11/18/05
13	vs. Abilene Christian, 11/26/02
13	at Texas Wesleyan, 2/3/01

Three-Point Field Goals Attempted

42	vs. Cameron, 11/27/99
39	vs. Abilene Christian, 12/12/98
38	vs. Concordia-Texas, 1/30/99
36	vs. Texas Lutheran, 1/15/00
33	vs. Abilene Christian, 11/25/03
33	vs. Texas Wesleyan, 2/26/00
32	at Montana State-Billings, 1/6/07
32	vs. Abilene Christian, 11/26/02
32	at Baylor, 12/9/00
31	Four times

Three-Point Field Goal Percentage

.889	vs. Texas Lutheran, 2/7/94
.833	vs. Texas Wesleyan, 2/29/92
.778	vs. Concordia-Texas, 2/12/90

.778	vs. Southwestern, 1/25/89
.775	vs. Texas A&M-Kingsville, 12/2/91
.750	vs. Schreiner, 11/17/92
.727	at UT-Permian Basin, 12/20/02
.706	vs. Concordia-Texas, 12/9/02
.667	Three times

Free Throws Made

41	vs. Huston-Tillotson, 1/19/91
40	vs. Mary Hardin-Baylor, 2/13/93
39	vs. Trinity, 2/7/56
38	vs. Huston-Tillotson, 2/19/83
37	vs. Texas Lutheran, 1/25/58
36	at William Carey, 11/26/94
35	at Montana State-Billings, 1/28/06
34	vs. East Texas Baptist, 1/27/61
34	vs. Texas Lutheran, 1/30/88
33	at Mary Hardin-Baylor, 2/21/90

Free Throws Attempted

56	at Houston Baptist, 12/13/91
54	vs. Huston-Tillotson, 1/19/91
51	vs. Trinity, 2/7/56
50	vs. Mary Hardin-Baylor, 2/13/93
49	at Montana State-Billings, 1/28/06
49	at Concordia-Texas, 1/14/95
48	at William Carey, 11/26/94
48	at Huston-Tillotson, 1/29/92
46	vs. Midwestern State, 11/16/07
44	Two times

Free-Throw Percentage (Min. 10 FTM)

.923	vs. Harris-Stowe, 12/3/06
.916	vs. Oklahoma Baptist, 11/18/88
.909	at UT-Pan American, 2/4/06
.905	vs. Abilene Christian, 11/27/06
.905	vs. St. Mary's, 1/14/98
.900	at Texas A&M-Kingsville, 11/19/94
.895	at Drury, 2/8/03
.895	vs. Stephen F. Austin, 11/30/85
.890	vs. Angelo State, 1981
.882	at Concordia-Texas, 1/27/86

Rebounds

86	vs. Huston-Tillotson, 2/6/61
65	vs. Schreiner, 1/24/00
62	vs. Howard Payne, 11/20/82
55	vs. Concordia-Texas, 11/18/86
54	vs. Chadron State, 11/22/03
54	at William Carey, 11/26/94
53	vs. UT-Permian Basin, 12/29/03
53	vs. Cameron, 11/27/99
52	vs. Houston Baptist, 12/7/98
52	at Houston Baptist, 11/7/95

Fouls

41	at Montana State-Billings, 1/28/06
35	at Dallas Baptist, 1/7/08
32	at Tarleton State, 11/26/07
32	vs. Houston Baptist, 1/16/99
32	at St. Mary's, 2/27/88
31	vs. Concordia-Texas, 11/21/06
30	vs. Texas A&M-International, 2/3/07
30	vs. Rockhurst, 1/9/05
29	Three times

Assists

38	vs. SW Assemblies of God, 1979
37	vs. Huston-Tillotson, 1/3/08
37	vs. Texas Wesleyan, 2/25/93
35	vs. Houston Baptist, 2/1/97
30	vs. Univ. de las Americas, 11/16/87
28	vs. East Texas Baptist, 2/7/83
27	vs. Huston-Tillotson, 12/6/06
27	vs. Concordia-Texas, 11/21/06
26	vs. St. Mary's, 3/3/92
26	vs. Concordia-Texas, 12/5/90

Blocked Shots

9	vs. University of Dallas, 1/29/05
7	vs. Western New Mexico, 12/17/03
7	vs. Incarnate Word, 2/22/01
6	vs. Texas A&M-International, 2/23/08
6	vs. Huston-Tillotson, 1/3/08
6	vs. Houston Baptist, 12/7/07
6	at Lincoln, 1/25/06
6	at Incarnate Word, 1/20/06
6	vs. Abilene Christian, 11/29/04
6	vs. New Mexico Highlands, 11/19/04

Steals

20	vs. Huston-Tillotson, 12/6/06
20	vs. Concordia-Texas, 11/21/06
20	vs. Norwich, 11/18/05
17	vs. Ok Panhandle State, 1/31/08
17	vs. Lincoln, 1/12/08
17	vs. Tulane, 12/19/05
17	vs. Huston-Tillotson, 11/28/05
16	vs. Midwestern State, 12/2/96
14	vs. Harding, 11/21/03
14	at St. Mary's, 2/19/94

Team Season Records

Points

2779	1993-1994
2717	1986-1987
2659	1987-1988
2620	1985-1986
2573	1984-1985
2553	1988-1989
2537	1995-1996
2487	1992-1993
2464	1989-1990
2454	1983-1984

Scoring Average

92.6	1993-1994
84.6	1995-1996
82.9	1992-1993
82.3	1986-1987
81.8	1960-1961
81.1	1979-1980
80.6	1987-1988
80.4	1999-2000
80.0	1974-1975
79.5	1994-1995

Points Allowed

884	1948-1949
1211	1957-1958
1228	1949-1950
1235	1958-1959
1243	1953-1954
1247	1950-1951
1374	1962-1963
1452	1955-1956
1482	1963-1964
1522	1956-1957

Opponents Scoring Average

40.2	1948-1949
49.1	1946-1947
49.9	1950-1951
53.4	1949-1950
54.0	1953-1954
57.8	1957-1958
63.4	1956-1957
65.0	1958-1959
66.0	1955-1956
66.1	2006-2007

Field Goals Made

1072	1986-1987
1034	1984-1985
1016	1985-1986
1003	1987-1988
992	1994-1995
982	1982-1983
979	1993-1994
971	1981-1982
948	1988-1989
940	1995-1996

Field Goals Attempted

2146	1984-1985
2076	1986-1987
2069	1994-1995
2036	1987-1988
2026	1995-1996
2009	1981-1982
1958	1985-1986
1957	1988-1989
1920	1990-1991
1900	1982-1983

Field Goal Percentage

.545	1993-1994
.519	1992-1993
.519	1985-1986
.516	1986-1987

.509	1991-1992
.507	1994-1995
.499	1983-1984
.496	1995-1996
.493	Two times

Opponent's Field Goal Pct.

.251	1948-1949
.313	1949-1950
.438	2006-2007
.450	1999-2000
.451	1986-1987
.454	2007-2008
.455	1985-1986
.459	1998-1999
.460	2003-2004
.461	2004-2005
.471	1972-1973

3-Point Field Goals Made

216	2007-2008
214	1999-2000
213	1998-1999
207	2000-2001
205	2005-2006
194	2006-2007
193	2002-2003
183	1993-1994
179	2001-2002
176	2003-2004

3-Pt Field Goals Attempted

656	1998-1999
611	2005-2006
606	1999-2000
602	2006-2007
567	2000-2001
548	2002-2003
542	2003-2004
538	2007-2008
481	1993-1994
456	2001-2002

3-Pt Field Goal Pct.

.458	1992-1993
.424	1989-1990
.420	1987-1988
.412	1996-1997
.401	2007-2008
.393	2001-2002
.392	1991-1992
.381	1994-1995
.381	1993-1994
.379	1988-1989

Free Throws Made

590	1985-1986
582	1983-1984
569	1989-1990
538	1992-1993
537	1987-1988
519	1995-1996
518	1988-1989
511	1956-1957
509	1994-1995
504	Two times

Free Throws Attempted

913	1985-1986
833	1983-1984
795	1989-1990
791	2007-2008
768	1992-1993
766	1993-1994
766	1991-1992
757	1971-1972
753	1956-1957
752	1987-1988

Free-Throw Percentage

.763	1953-1954
.741	1968-1969
.737	1966-1967
.732	2006-2007
.721	1960-1961
.716	2005-2006
.716	1989-1990
.714	1987-1988
.712	Three times

Rebounds

1301	1956-1957
------	-----------

1287	1960-1961
1241	1986-1987
1231	1981-1982
1197	1970-1971
1137	1982-1983
1133	1985-1986
1113	1955-1956
1107	1984-1985
1095	1982-1983

Rebounding Avg

61.3	1960-1961
54.2	1956-1957
50.6	1955-1956
46.1	1970-1971
45.2	1957-1958
42.9	1966-1967
41.6	1968-1969
41.4	1959-1960
41.0	1971-1972
39.7	1999-2000

Fouls

693	1985-1986
686	2006-2007
668	2007-2008
667	2005-2006
579	1951-1952
559	1998-1999
556	1974-1975
537	

Individual Game Records

Points

46	Zembra Everett	1974*
44	Lawrence Ramsey	vs. Texas A&M—Commerce, 11/29/02
42	Jay Lee Hobbs	vs. Lubbock Christian, 1/22/90
42	Joe Beck	vs. Texas Southern, 1957
41	David Lunn	vs. Montana State—Billings, 2/10/06
41	Marcus Jones	vs. Texas Wesleyan, 1982
40	Bradley Burdick	vs. Midwestern State, 11/15/00
40	DeNell Davis	vs. Huston—Tillotson, 1983
38	Bob Beck	vs. Southwestern, 2/9/71
37	Four times	—

Field Goals Made

20	Zembra Everett	1974*
17	Jay Lee Hobbs	vs. Lubbock Christian, 1/22/90
17	Bob Beck	vs. Southwestern, 2/9/71
16	Lawrence Ramsey	vs. Texas A&M—Commerce, 11/29/02
16	Jimmy Wheeler	vs. Mary Hardin-Baylor, 3/1/94
16	Gus Benson	vs. East Texas Baptist, 1/26/85
15	Taylor Mullenax	at UT—Permian Basin, 1/25/07
14	Five times	—

Field Goals Attempted

29	Jay Lee Hobbs	at Abilene Christian, 1/6/89
28	Bob Beck	vs. Southwestern, 2/9/71
27	Ben Lyman	vs. Cameron, 11/27/99
27	Ben Lyman	vs. Midwestern State, 12/6/99
27	Donnie Wynn	at Texas Wesleyan, 2/23/94
24	Ben Lyman	vs. Incarnate Word, 1/12/00
23	Ben Lyman	at Texas Wesleyan, 2/3/01
23	Donnie Wynn	at Incarnate Word, 2/18/93
22	14 times	—

Field Goal Percentage (Min. 5 FGM)

1.000 (11-11)	Daniel Pierre	vs. Fort Lewis, 11/17/07
1.000 (11-11)	Jimmy Wheeler	at Houston Baptist, 12/13/91
1.000 (9-9)	Lachlan Teasdale	vs. Texas Lutheran, 1/15/00
1.000 (8-8)	Jermaine Phillips	vs. Incarnate Word, 2/20/03
1.000 (7-7)	Taylor Mullenax	at Montana State—Billings, 1/7/07
1.000 (6-6)	Taylor Mullenax	vs. Lincoln, 1/12/08
1.000 (6-6)	Cory Griffin	vs. St. Mary's, 1/20/07
1.000 (6-6)	Ryan Flores	vs. Bellarmine, 11/24/00
1.000 (6-6)	Lachlan Teasdale	vs. Eastern New Mexico, 12/1/00
1.000 (5-5)	Seven times	—

Three-Point Field Goals Made

10	Ben Lyman	at Drury, 2/10/01
9	Ben Lyman	at Texas Wesleyan, 2/3/01
9	Chris Robinson	1990–1991*
8	Todd Naff	vs. Huston—Tillotson, 11/26/96
8	Chris Robinson	vs. Concordia—Texas, 2/12/90
7	Ben Lyman	vs. Eastern New Mexico, 12/1/00
7	Ben Lyman	vs. Cameron, 11/27/99
7	Ben Lyman	vs. Texas Lutheran, 2/2/00
7	Bradley Burdick	vs. Texas Lutheran, 1/15/00
7	Brandon Alexander	vs. Bellarmine, 12/15/97

Three-Point Field Goals Attempted

18	Ben Lyman	at Texas Wesleyan, 2/3/01
17	Ben Lyman	vs. Cameron, 11/27/99
17	Ben Lyman	vs. Angelo State, 11/23/98
16	Ben Lyman	vs. Midwestern State, 12/6/99
16	Ben Lyman	vs. Texas Wesleyan, 2/26/00
16	Rhonney Greene	vs. Abilene Christian, 12/12/98
14	Five times	—

Three-Point Field Goal Percentage (Min. 4 3FGM)

1.000 (5-5)	Todd Naff	vs. Incarnate Word, 1/18/95
1.000 (5-5)	Bobby Foster	vs. Texas Lutheran, 2/16/91
1.000 (4-4)	Shawn Weinstein	vs. Concordia—Texas, 11/20/07
1.000 (4-4)	James Gaskin	at Drury, 1/10/04
1.000 (4-4)	Chris Robinson	vs. Texas Lutheran, 2/7/90
1.000 (4-4)	Jason Viers	vs. Concordia—Texas, 12/5/90
1.000 (4-4)	Dwight Whittington	at Texas Wesleyan, 1/25/88
.889 (8-9)	Chris Robinson	vs. Concordia—Texas, 2/12/90
.833 (5-6)	Seven times	—

Free Throws Made

17	Larry Kruse	1983*
16	John Wells	vs. St. Mary's, 2/15/69
15	Jim Board	vs. University of Dallas, 1/15/59
15	Joe Beck	vs. Texas Southern, 1956–1957
14	Bradley Burdick	vs. Texas Wesleyan, 3/1/01
14	Mike Steger	vs. Paul Quinn, 12/1/89
13	Five times	—

Free Throws Attempted

18	Larry Kruse	1983*
17	Lawrence Ramsey	vs. Drury, 1/11/03
17	Jimmy Wheeler	at Lubbock Christian, 11/12/93
17	John Wells	vs. St. Mary's, 2/15/69
16	Seven times	—

Free-Throw Percentage (Min. 5 FTM)

1.000 (14-14)	Bradley Burdick	vs. Texas Wesleyan, 3/1/01
1.000 (12-12)	Gabe Ramirez	vs. St. Mary's, 2/15/92
1.000 (12-12)	Richard Paxton	vs. Huston—Tillotson, 1/19/91
1.000 (10-10)	Shawn Weinstein	vs. Abilene Christian, 11/27/06
1.000 (10-10)	Joe Dinkins	at Lincoln, 2/14/04
1.000 (10-10)	Bradley Burdick	at Midwestern State, 12/18/00
1.000 (9-9)	Bradley Burdick	at Texas State, 11/18/00
1.000 (9-9)	Jelani Gibson	at Schreiner, 2/18/98
1.000 (8-8)	10 times	—

Rebounds

33	Jim O'Keefe	vs. St. Mary's, 2/22/61
29	Jim O'Keefe	vs. St. Mary's, 1961
23	Lachlan Teasdale	vs. Schreiner, 1/24/00
21	Lachlan Teasdale	vs. Angelo State, 11/23/99
20	Lachlan Teasdale	vs. Southern Arkansas, 11/19/99
20	Lachlan Teasdale	vs. Texas Lutheran, 2/2/00
20	Jimmy Wheeler	at Abilene Christian, 12/6/91
20	Mike Reilly	vs. LeTourneau, 12/5/70
20	DeNell Davis	vs. Concordia—Texas, 11/18/86
19	Five times	—

Assists

17	J.J. Thomas	vs. Texas Lutheran, 1993–1994
13	Ryan Flores	vs. Eastern New Mexico, 12/1/00
12	Ryan Flores	vs. Concordia—Texas, 11/21/00
12	Ryan Flores	vs. Huston—Tillotson, 11/28/00
11	Ryan Flores	at Drury, 2/10/01
11	J.J. Thomas	vs. Wayland Baptist, 1/22/94
11	J.J. Thomas	vs. Mary Hardin-Baylor, 2/13/93
11	Dwight Whittington	vs. Howard Payne, 12/8/87
11	Ron Kruger	1979*
10	Seven times	—

Blocked Shots

5	Taylor Mullenax	vs. Abilene Christian, 11/30/05
4	Taylor Mullenax	vs. Huston—Tillotson, 1/3/08
4	Kenneth Edwards	vs. St. Mary's, 1/20/07
4	Chris Smith	vs. University of Dallas, 1/29/05
4	Anthony Felder	at Oklahoma Panhandle State, 12/6/05
4	Chris Smith	vs. Abilene Christian, 11/29/04
4	Jimmy Wheeler	vs. St. Mary's, 3/3/92
3	12 times	—

Steals

7	Taylor Land	vs. Newman, 12/2/06
7	Cyrus Russell	vs. SE Oklahoma State, 12/8/03
7	Jon Felmet	vs. Angelo State, 11/23/99
6	Taylor Land	vs. Lincoln, 1/12/08
5	17 times	—

* Individual game information not available



Cory Griffin

18 HISTORY & RECORDS

Individual Season Records

Games

35	Chris Collins	1983–1984
35	DeNell Davis	1983–1984
35	Jerry Farias	1983–1984
35	James Johnson	1983–1984
35	Ellis Montet	1983–1984
34	Six times	

Points

687	Jimmy Wheeler	1993–1994
679	Jay Lee Hobbs	1988–1989
665	Jay Lee Hobbs	1987–1988
645	Chad Townsend	1994–1995
642	DeNell Davis	1986–1987
629	Jay Lee Hobbs	1989–1990
599	DeNell Davis	1983–1984
581	Marcus Holden	1988–1989
580	Zembra Everett	1971–1972
574	Two times	

Scoring Average

23.0	Zembra Everett	1973–1974
22.9	Jimmy Wheeler	1993–1994
22.3	Zembra Everett	1971–1972
21.5	Chad Townsend	1994–1995
21.1	Lawrence Ramsey	2002–2003
20.6	Zembra Everett	1972–1973
20.8	Larry Kruse	1982–1983
20.4	Jack Hellett	1952–1953
20.2	Jay Lee Hobbs	1987–1988
20.2	Jay Lee Hobbs	1988–1989

Field Goals Made

273	Jay Lee Hobbs	1988–1989
265	Jay Lee Hobbs	1987–1988
248	Jay Lee Hobbs	1989–1990
247	DeNell Davis	1986–1987
247	Marcus Jones	1981–1982
230	Chad Townsend	1994–1995
229	Zembra Everett	1973–1974
220	Mike Steger	1989–1990
218	Zembra Everett	1971–1972
215	DeNell Davis	1983–1984

Field Goals Attempted

479	Jay Lee Hobbs	1988–1989
471	Chad Townsend	1994–1995
469	Jay Lee Hobbs	1987–1988
465	Ben Lyman	1999–2000
456	Jay Lee Hobbs	1989–1990
452	Zembra Everett	1973–1974
448	Ben Lyman	2000–2001
442	Lawrence Ramsey	2002–2003
416	Ronie Smith	1985–1986
412	DeNell Davis	1986–1987

Field Goal Pct (Min. 100 FGA)

.700	Jimmy Wheeler	1992–1993
.676	Jimmy Wheeler	1991–1992
.656	Daniel Pierre	2007–2008
.648	Taylor Mullenax	2006–2007
.636	Lachlan Teasdale	1999–2000
.622	Rick Hawkins	1980–1981
.607	Gus Benson	1983–1984
.607	Zembra Everett	1970–1971
.606	Gus Benson	1984–1985
.601	Jay Lee Hobbs	1986–1987

Three-Point Field Goals Made

102	Ben Lyman	2000–2001
96	Ben Lyman	1998–1999
91	Ben Lyman	1999–2000
71	Chris Robinson	1989–1990
69	Shawn Weinstein	2007–2008

66	Bradley Burdick	2001–2002
64	Shawn Weinstein	2005–2006
63	Shawn Weinstein	2006–2007
62	Todd Naff	1994–1995
58	Two times	

Three-Point Field Goals Attempted

258	Ben Lyman	1998–1999
254	Ben Lyman	1999–2000
253	Ben Lyman	2000–2001
179	Shawn Weinstein	2006–2007
179	Bradley Burdick	2001–2002
173	Rhonney Greene	1998–1999
170	Shawn Weinstein	2005–2006
164	Shawn Weinstein	2007–2008
155	Bradley Burdick	2000–2001
148	Todd Naff	1994–1995

Three-Point Field Goal Pct. (Min. 75 3FGA)

.511	Cyrus Russell	2001–2002
.490	Richard Paxton	1990–1991
.490	Chris Robinson	1989–1990
.477	Dwight Whittington	1987–1988
.474	Richard Paxton	1991–1992
.460	Bradley Burdick	1999–2000
.421	Shawn Weinstein	2007–2008
.421	Brandon Alexander	1995–1996
.419	Todd Naff	1994–1995
.417	Cyrus Russell	2002–2003

Free Throws Made

169	DeNell Davis	1983–1984
161	Chad Townsend	1994–1995
148	DeNell Davis	1986–1987
145	Jelani Gibson	1997–1998
144	Zembra Everett	1971–1972
141	Lawrence Ramsey	2002–2003
139	David Lunn	2005–2006
133	Jay Lee Hobbs	1988–1989
133	Jay Lee Hobbs	1987–1988
132	Mike Steger	1989–1990

Free Throws Attempted

251	DeNell Davis	1983–1984
248	DeNell Davis	1986–1987
207	Chad Townsend	1994–1995
201	Daniel Pierre	2007–2008
193	DeNell Davis	1982–1983
192	Zembra Everett	1971–1972
191	Larry Kruse	1982–1983
186	Jelani Gibson	1997–1998
185	Lawrence Ramsey	2002–2003
185	DeNell Davis	1985–1986

Free-Throw Pct. (Min. 100 FTA)

.877	Bradley Burdick	1999–2000
.870	Chris Robinson	1989–1990
.860	Bradley Burdick	2000–2001
.858	David Lunn	2005–2006
.852	Darren Templeton	1987–1988
.847	Shawn Weinstein	2006–2007
.842	Bradley Burdick	2001–2002
.841	Jeff Applewhite	1985–1986
.836	Joe Beck	1957–1958
.833	Jim Board	1959–1960

Rebounds

436	Jim O'Keefe	1960–1961
356	Bob Bella	1951–1952
321	DeNell Davis	1986–1987
319	Lachlan Teasdale	1999–2000
306	Jim O'Keefe	1959–1960
303	Jimmy Wheeler	1991–1992
297	Jay Lee Hobbs	1989–1990
292	Jay Lee Hobbs	1988–1989

286	Phil White	1962–1963
285	Phil White	1960–1961
284	Jay Lee Hobbs	1987–1988

Rebounding Average

20.7	Jim O'Keefe	1960–1961
14.3	Phil White	1962–1963
13.9	Jim O'Keefe	1959–1960
13.6	Phil White	1960–1961
12.3	Bob Bella	1951–1952
11.8	Lachlan Teasdale	1999–2000
11.8	Jim O'Keefe	1958–1959
10.8	Jimmy Wheeler	1991–1992
10.8	Al Priestley	1971–1972
10.7	Zembra Everett	1972–1973

Assists

202	Ryan Flores	2000–2001
140	Chavon Farmer	2005–2006
128	Chad Townsend	1994–1995
124	Taylor Land	2007–2008
119	Dwight Whittington	1987–1988
112	Greg Marshall	1979–1980
111	Jerry Farias	1983–1984
110	Dwight Whittington	1986–1987
103	Johnny Campbell	1979–1980
96	Jon Felmet	1999–2000

Steals

68	Cornelius Gilleylen	2006–2007
58	Shawn Weinstein	2006–2007
56	Shawn Weinstein	2007–2008
55	David Lunn	2005–2006
53	Taylor Land	2007–2008
51	Cornelius Gilleylen	2005–2006
50	Chavon Farmer	2005–2006
50	Ja'Faar Johnson	2004–2005
47	Jon Felmet	1999–2000
45	Taylor Land	2006–2007

Blocks

42	Chris Smith	2004–2005
41	Jimmy Wheeler	1991–1992
26	Kenneth Edwards	2006–2007
22	Taylor Mullenax	2007–2008
19	Taylor Mullenax	2006–2007
19	David Lunn	2005–2006
19	Darien Burton	2000–2001
16	Four times	

Career Records

Games

132	DeNell Davis	1982–1987
130	Jay Lee Hobbs	1986–1990
115	Larry Kruse	1979–1983
110	Kenneth Edwards	2003–2007
107	Bradley Burdick	1998–2002
107	Bradley Burdick	1998–2002
106	Shawn Lovorn	1997–2001
106	Todd Naff	1993–1997
105	Rhonney Greene	1996–2000
103	Two times	

Points

2275	Jay Lee Hobbs	1986–1990
2254	DeNell Davis	1982–1987
1842	Zembra Everett	1970–1974
1690	Jimmy Wheeler	1991–1994
1584	Bradley Burdick	1998–2002
1473	Ben Lyman	1998–2001
1451	Bob Beck	1967–1971
1449	Brandon Alexander	1994–1998

1404	Larry Kruse	1979–1983
1371	Mike Otolski	1963–1967
1367	Jim O'Keefe	1958–1962
1333	Shawn Weinstein	2005–2008
1228	Mike Canfield	1964–1968
1218	Rhonney Greene	1996–2000
1215	Cyrus Russell	2001–2004
1214	James Johnson	1983–1984
1189	Ed Neu	1948–1952
1175	Jack Hellett	1950–1954
1141	Gus Benson	1982–1985
1119	Donnie Wynn	1992–1994
1047	Johnny Wells	1965–1969
1017	Wilbur Kohline	1955–1959
1012	Jerry Farias	1981–1985
1003	Al Priestley	1967–1972

Points Per Game

20.1	Jimmy Wheeler	1991–1994
19.4	Marcus Bolden	1988–1989
19.0	Donnie Wynn	1992–1994
18.6	Zembra Everett	1970–1974
18.4	Ben Lyman	1998–2001
17.5	Jay Lee Hobbs	1986–1990
17.3	Lawrence Ramsey	2001–2003
17.1	Mike Steger	1989–1991
17.1	DeNell Davis	1982–1987
17.1	Jim Board	1959–1961

Field Goals Made

880	Jay Lee Hobbs	1986–1990
856	DeNell Davis	1982–1987
713	Zembra Everett	1970–1974
578	Bob Beck	1967–1971
545	James Johnson	1983–1987
544	Jim O'Keefe	1958–1962
528	Ben Lyman	1998–2001
520	Larry Kruse	1979–1983
491	Rhonney Greene	1996–2000
476	Bradley Burdick	1998–2002

Field Goals Attempted

1534	Jay Lee Hobbs	1986–1990
1520	DeNell Davis	1982–1987
1330	Zembra Everett	1970–1974
1302	Ben Lyman	1998–2001
1263	Rhonney Greene	1996–2000
1237	Bob Beck	1967–1971
1170	Bradley Burdick	1998–2002
1117	Jim O'Keefe	1958–1962
1081	Greg Moore	1972–1976
1052	Larry Kruse	1979–1983

Field Goal Pct. (Min. 400 FGA)

.595	Taylor Mullenax	2005–
.591	Daniel Pierre	2005–2008
.580	Darren Arneke	1985–1988
.574	Jay Lee Hobbs	1986–1990
.563	DeNell Davis	1982–1987
.563	Gus Benson	1981–1985
.555	Mark Klemm	2001–2005
.555	Shawn Lovorn	1997–2001
.536	Zembra Everett	1970–1974
.519	James Johnson	1983–1987

Three-Point Field Goals Made

289	Ben Lyman	1998–2001
208	Bradley Burdick	1998–2002
196	Shawn Weinstein	2005–2008
159	Cyrus Russell	2001–2004
156	Rhonney Greene	1996–2000
93	Jannik Zimmer	2006–
65	Cornelius Gilleylen	2005–2007
63	James Gaskin	2002–2006
59	Terrence Thomas	2000–2002
56	Andrew Nagel	2003–

Three-Point Field Goals Attempted

765	Ben Lyman	1998–2001
598	Rhonney Greene	1996–2000
555	Bradley Burdick	1998–2002
513	Shawn Weinstein	2005–2008
363	Cyrus Russell	2001–2004
305	Todd Naff	1993–1997
259	Jannik Zimmer	2006–
242	Cornelius Gilleylen	2005–2007
188	James Gaskin	2002–2006
163	Chad Collins	2002–2004

Three-Point Field Goal Pct. (Min. 100 3FGA)

.399	Dian Ivanov	2006–2008
.382	Shawn Weinstein	2005–2008
.378	Terrence Thomas	2000–2002
.378	Ben Lyman	1998–2001
.375	Bradley Burdick	1998–2002
.364	Andrew Nagel	2003–
.364	Shawn Weinstein	2005–
.359	Jannik Zimmer	2006–
.346	Lawrence Ramsey	2001–2003
.335	James Gaskin	2002–2006

Free Throws Made

542	DeNell Davis	1982–1987
488	Johnny Wells	1965–1969
418	Bradley Burdick	1998–2002
416	Zembra Everett	1970–1974
393	Jay Lee Hobbs	1986–1990
364	Larry Kruse	1979–1983
363	Ed Neu	1948–1952
354	Mike Otolski	1963–1967
352	Bob Beck	1967–1971
320	Mike Canfield	1964–1968

Free Throws Attempted

877	DeNell Davis	1982–1987
630	Johnny Wells	1965–1969
545	Zembra Everett	1970–1974
532	Bob Beck	1967–1971
517	Al Priestley	1967–1972
502	Larry Kruse	1979–1983
496	Bradley Burdick	1998–2002
492	Wilbur Kohline	1955–1959
487	Ed Neu	1948–1952
474	Jay Lee Hobbs	1986–1990

Free-Throw Pct. (Min. 150 FTA)

.858	David Lunn	2005–2006
.843	Bradley Burdick	1998–2002
.833	Mike Canfield	1964–1968
.825	Jeff Applewhite	1984–1987
.820	Ellis Montet	1981–1984
.799	Shawn Weinstein	2005–2008
.796	Jerry Board	1959–1962
.792	Gus Benson	1981–1985
.789	Cyrus Russell	2001–2004
.780	Mike Otolski	1963–1967

Rebounds

1276	Jim O'Keefe	1958–1962
1170	Phil White	1960–1964
1164	Jay Lee Hobbs	1986–1990
1083	DeNell Davis	1982–1987
883	Al Priestley	1967–1972
844	Bob Beck	1967–1971
818	Albert Popp	1953–1957
738	Lachlan Teasdale	1998–2001
714	James Johnson	1983–1987
704	Ron Latosinski	1954–1958

Rebounding Average

15.4	Jim O'Keefe	1958–1962
13.9	Phil White	1960–1964

10.3	Lawrence Britton	1973–1975
9.8	Al Priestley	1967–1972
9.3	Lachlan Teasdale	1998–2001
9.0	Jay Lee Hobbs	1986–1990
8.7	Albert Popp	1953–1957
8.3	Joe Beck	1955–1958
8.3	Ron Latosinski	1954–1958
8.2	Two times	

Assists

435	Ryan Flores	1998–2002
256	Taylor Land	2005–
250	Jerry Farias	1981–1985
229	Shawn Weinstein	2005–2008
229	Dwight Whittington	1986–1988
226	Darren Templeton	1986–1989
222	Rhonney Greene	1996–2000
221	Larry Kruse	1979–1983
206	Johnny Campbell	1979–1981
202	Chavon Farmer	2005–2007

Assists Per Game

4.7	Ryan Flores	1998–2002
3.7	Johnny Campbell	1979–1981
3.5	Derek Whittington	1986–1988
3.4	Chavon Farmer	2005–2007
2.9	Jerry Farias	1981–1985
2.8	Taylor Land	2005–
2.5	Shawn Weinstein	2005–2008
2.2	Darren Templeton	1986–1989
2.1	Ben Lyman	1998–2001
2.1	Rhonney Greene	1996–2000

Steals

157	Shawn Weinstein	2005–2008
119	Taylor Land	2005–
119	Cornelius Gilleylen	2004–2006
119	Rhonney Greene	1996–2000
107	Cyrus Russell	2001–2004
96	Ryan Flores	1998–2002
85	Bradley Burdick	1998–2002
82	Ben Lyman	1998–2001
68	Jon Felmet	1998–2000
61	Two times	

Blocks

60	Kenneth Edwards	2003–2007
56	Shawn Lovorn	1997–2001
55	Taylor Mullenax	2005–
42	Chris Smith	2004–2005
41	Jimmy Wheeler	1991–1994
35	Rhonney Greene	1996–2000
31	Anthony Felder	2003–2007
30	Jeff Obersteller	2003–2007
30	Darien Burton	1998–2001
26	Mark Klemm	2001–2005

20 HISTORY & RECORDS

Year-by-Year Records

Year	Overall	Pct.	Conf.	Pct.	Coach	Notes
1921-1922	4-1	.800	—	—	Jack Meagher	
1922-1923	11-3	.786	—	—	Jack Meagher	
1923-1924	6-3	.667	—	—	Jack Meagher	
1924-1925	N/A					
1925-1926	16-7	.696	—	—	Edmund Woeber	
1926-1927	N/A					
1927-1928	8-14	.364	—	—	N/A	
1928-1929	8-10	.444	—	—	N/A	
1929-1930	3-11	.214	—	—	Julius Jones	
1930-1931	2-8	.200	—	—	Julius Jones	
1931-1932	N/A					
1932-1933	N/A	—	—	—	Julius Jones	
1933-1934	1-8	.111	—	—	Julius Jones	
1934-1935	1-5	.167	—	—	Matt Guoze	
1935-1936	1-9	.100	—	—	Matt Guoze	
1936-1937	3-11	.214	—	—	Matt Guoze	
1937-1938	N/A					
1938-1939	N/A					
1939-1946	No Team					
1946-1947	N/A					
1947-1948	N/A	—	—	—	Ed Norris	
1948-1949	19-4	.826	—	—	Ed Norris	
1949-1950	10-13	.435	—	—	Ed Norris	
1950-1951	17-8	.680	—	—	Ed Norris	
1951-1952	22-7	.759	9-3	.750	Ed Norris	T — 2nd Big State Conference
1952-1953	11-11	.500	4-6	.400	Ed Norris	4th Big State Conference
1953-1954	16-7	.696	8-2	.800	Ed Norris	Big State Conference Co-Champions
1954-1955	11-9	.550	6-4	.600	Ed Norris	3rd Big State Conference
1955-1956	13-9	.591	6-4	.600	Ed Norris	T — 2nd Big State Conference
1956-1957	11-12	.478	4-4	.500	Ed Norris	2nd Big State Conference
1957-1958	12-9	.571	6-4	.600	Ed Norris	
1958-1959	10-9	.526	3-5	.375	Ed Norris	
1959-1960	16-6	.727	5-3	.625	Ed Norris	
1960-1961	14-7	.667	6-4	.600	Ed Norris	
1961-1962	14-7	.667	5-5	.500	Ed Norris	
1962-1963	8-12	.667	5-3	.625	Ed Norris	2nd Big State Conference
1963-1964	15-6	.714	6-2	.750	Ed Norris	Big State Conference Co-Champions
1964-1965	10-11	.476	4-4	.500	Ed Norris	
1965-1966	11-10	.524	5-5	.500	Joe Beck	
1966-1967	13-9	.591	5-5	.500	Joe Beck	
1967-1968	6-15	.286	3-7	.300	Joe Beck	
1968-1969	13-8	.619	5-3	.625	Joe Beck	
1969-1970	14-12	.538	5-5	.500	Joe Beck	
1970-1971	14-12	.538	8-2	.800	Joe Beck	Big State Conference Co-Champions
1971-1972	13-13	.500	7-5	.583	Joe Beck	
1972-1973	8-16	.333	4-8	.333	Joe Beck	
1973-1974	10-15	.400	6-6	.500	Joe Beck	
1974-1975	14-11	.560	7-5	.583	Tim Walker	
1975-1976	8-17	.320	4-8	.333	Tim Walker	
1976-1977	8-19	.296	2-8	.200	Tim Walker	
1977-1978	7-17	.292	1-9	.100	Tim Walker	
1978-1979	8-19	.296	2-8	.200	Rick Starzecki	
1979-1980	17-11	.607	8-4	.667	Dan Montgomery	
1980-1981	13-16	.448	7-5	.583	Dan Montgomery	
1981-1982	16-17	.485	7-5	.583	Dan Montgomery	
1982-1983	13-18	.419	6-4	.600	Dan Montgomery	
1983-1984	14-21	.400	5-5	.500	Tom Pate	T — 3rd Big State Conference
1984-1985	13-17	.433	6-7	.462	Tom Pate	3rd Big State Conference
1985-1986	21-11	.656	9-1	.900	Tom Pate	Big State Conference Champions
1986-1987	23-10	.697	11-3	.786	Tom Pate	Big State Conference Co-Champions
1987-1988	17-16	.515	4-6	.400	Tom Pate	4th Heart of Texas Conference
1988-1989	16-17	.485	5-5	.500	Tom Pate	T — 3rd Heart of Texas Conference
1989-1990	19-13	.594	7-3	.700	Tom Pate	2nd Heart of Texas Conference
1990-1991	8-23	.258	3-5	.375	Tom Pate	T — 5th Heart of Texas Conference
1991-1992	10-20	.333	0-10	.000	Tom Pate	6th Heart of Texas Conference
1992-1993	18-12	.600	5-5	.500	Tom Pate	T — 3rd Heart of Texas Conference
1993-1994	23-6	.793	7-3	.700	Tom Pate	Heart of Texas Conference Co-Champions
1994-1995	9-21	.300	3-11	.214	Tom Pate	7th Heart of Texas Conference
1995-1996	8-22	.267	4-10	.286	Tom Pate	6th Heart of Texas Conference
1996-1997	12-14	.462	8-8	.500	Tom Pate	T — 5th Heart of Texas Conference
1997-1998	7-19	.269	5-9	.357	Tom Pate	T — 5th Heart of Texas Conference
1998-1999	10-17	.370	5-5	.500	Mike Jones	3rd Heart of Texas Conference
1999-2000	16-11	.593	—	—	Mike Jones	
2000-2001	10-17	.370	—	—	Mike Jones	
2001-2002	4-23	.148	1-10	.091	Mike Jones	T — 6th Heartland Conference
2002-2003	4-23	.148	0-10	.000	Mike Jones	6th Heartland Conference
2003-2004	8-19	.297	4-8	.333	Mike Jones	6th Heartland Conference
2004-2005	6-21	.222	1-11	.083	Ryan Marks	7th Heartland Conference
2005-2006	21-9	.700	9-3	.750	Ryan Marks	Heartland Conference Co-Champions, NCAA Regional
2006-2007	24-6	.800	10-2	.833	Ryan Marks	Heartland Conference Champions, NCAA Regional
2007-2008	23-7	.767	9-1	.900	Ryan Marks	Heartland Conference Champions, NCAA Regional
Totals	827-873	.486	290-292	.498		

All-Time Roster

Name	Years	Name	Years	Name	Years	Name	Years
Aillet, Joseph	1924-1925	Carswell, Corey	1995-1997	Frederickson, Chris	1994-1996	Huey, Frank	1991-1992
Alexander, Brandon	1994-1998	Catalani, Alan	1979-1983	Friess, Charles	1957-1958	Hughes, Richard	1984-1985
Alexander, Greg	1983-1986	Cheatam, Bill	1932-1934	Fuentes, Oscar	1947-1948	Hunt, Hilary	1951-1952
Alexander, Scott	1971-1972	Chism, Joey	2000-2001	Gabbard, Ben	1961-1962	Hunt, Ryan	2005-2006
Allaire, Pete	1967-1970	Christensen, Doug	1974-1975	Gale, Van	1959-1960	Hunter, Bryan	1978-1980
Alves, Steven	1996-1997	Clark, Bill	1950-1951	Garcia, George	1961-1962	"	1981-1982
Andrejewski, Dick	1950-1951	Clifford, Dave	1970-1971	Garcia, Jose	1945-1946	Ikard, James	1947-1948
Angelich, Joe	1974-1975	Cole, Sean	2004-2005	Garcia, Luis	1945-1946	Ikard, John	1947-1948
Apfel, Herb	1949-1950	Collins, Chad	2002-2004	Gardner, Anthony	1985-1988	Ivanov, Dian	2005-2006
Applewhite, Jeff	1984-1987	Collins, Chris	1981-1985	Gardner, Walter	1974-1976	"	2007-2008
Arechiga, Domingo	1948-1949	Connell, Maurice	1946-1947	Garza, Jose	1947-1948	Jackson, Richard	1984-1986
Arnecke, Darren	1985-1988	Conrad, Joe	1960-1961	Garza, Rene	1947-1948	Jaeger, Jim	1980-1981
Apffel, Ervin	1948-1949	Coz, Mike	1970-1972	Garza, Sergio	1947-1948	James, Curly	1927-1928
Banks, Jaron	1996-1997	Crook, Greg	1972-1974	Garza, Tony	1962-1964	James, Geoffrey	2001-2002
Barilich, Kenneth	1975-1977	Crowther, Jim	1972-1974	Gaskin, James	2002-2006	James, Watty	1927-1929
Barstad, Nate	2007-2008	Crump, Jack	1948-1949	Gavin, Tim	1973-1975	Jansing, Harold	1927-1929
Bartos, Randy	1977-1979	Cuen, Julio	1933-1934	Gemoets, John	1930-1931	Jaska, Steve	1975-1979
Beach, Walter	1928-1931	Cunningham, Mike	1993-1994	George, Gus	1940-1941	Jaskowski, Hank	1952-1953
Beck, Bob	1967-1971	Daniel, Vincent	1924-1925	Gerhghy, Jim	1940-1941	Jensen, Mike	1965-1969
Beck, Joseph	1955-1958	Daniels, Floyd	2007-2008	Getter, Richie	2001-2002	Joes, Charlie	1982-1983
Bella, Bob	1950-1952	Davis, Bob	1956-1957	Gibson, Jelani	1996-1998	Johnson, Donald	2000-2001
Bella, Ron	1952-1956	Davis, DeNell	1982-1987	Giddens, Don	1973-1975	Johnson, Ja'Faar	2004-2005
Benford, Robert	1975-1977	Davis, Martin	1996-1998	Gifford, Dave	1971-1973	Johnson, James	1983-1987
Benson, Gus	1981-1985	Day, J.	1948-1949	Gilleylen, Cornelius	2005-2007	Johnson, Jarrett	1998-2000
Bentley, Chris	1981-1985	Deason, William	1945-1946	Gilson, Craig	2002-2006	Johnson, Kenneth	1988-1990
Berry, Tom	1965-1969	DeCello, Mike	1984-1986	Giroud, David	1947-1948	Jones, Herbert	1933-1934
Bird, Mark	1978-1982	Dehlinger, Bob	1940-1941	Glover, Andre	1980-1981	Jones, Marcus	1980-1982
Blacklock, Mike	1996-1998	Demack, Jack	1930-1931	Godfrey, Jeff	1971-1974	Jones, Mike	1980-1981
Blackmon, Will	1982-1983	De Salvo, Rich	1962-1964	Gonzalez, Pascual	1945-1946	"	1983-1984
Blaylark, Howard	1974-1975	Deveaux, Stephen	1991-1992	Goodloe, Richard	1963-1964	Jones, Tommy	1997-2000
Board, Jerry	1959-1962	Dickman, John	1928-1929	Gore, Tom	1953-1957	Kaiser, George	1957-1958
Board, Jim	1959-1961	Di Girolamo, Bob	1954-1955	Graves, David	2001-2002	Kamm, Robert	1957-1960
Board, Thomas	1956-1960	Dinkins, Joe	2002-2004	Green, Willie	1990-1991	Kampert, Devin	1987-1990
Bodin, Larry	1966-1968	Doga, Jim	1949-1953	Greene, Rhonney	1996-2000	Kander, Jim	1977-1978
Bohac, Rich	1971-1973	Donahue, John	1948-1949	Gribbon, William	1947-1948	Keane, Ed	1949-1950
Bolden, Marcus	1988-1989	Dowell, Barry	1982-1984	Griffin, Cory	2006-2008	Kelley, Bruce	1979-1980
Bosco, Ronald	1951-1955	Dryier, Bob	1952-1953	Grzegorek, George	1963-1967	Kelley, Tom	1975-1977
Bourgeois, Ray	1953-1956	Dudeck, Skip	1952-1953	Gunn, Paul	1945-1946	Kelly, James	1948-1949
Bradley, Paul	1975-1979	Dudney, Andy	1987-1991	Hagey, Paul	1997-2000	Kelly, Maurice	1933-1934
Brewer, Roland	1963-1965	Durkin, Walter	1933-1934	Haines, Jerry	1977-1981	Kelly, Rich	1969-1970
Brezsnyak, Al	1968-1970	Durrenberger, Marvin	1924-1925	Hall, Devon	1989-1991	Kennedy, Andrew	1994-1995
Bridgforth, Leo	1959-1960	Eckstein, Dave	1958-1962	Hall, Travis	1997-2001	Kennedy, Tom	1968-1969
Britton, Lawrence	1973-1975	Edwards, Kenneth	2003-2007	Harden, Jason	1990-1991	Kindred, Harold	1975-1979
Brotherman, Farris	1927-1928	Eichenroht, Robert	1930-1931	Handler, Ric	1964-1965	King, Henry	1945-1946
Brown, Delrick	2000-2002	Eisert, Eugene	1928-1929	Harden, Jason	1989-1992	Kirkhoff, Robert	1954-1955
Brown, Greg	1996-1998	Elizondo, Edwardo	1987-1988	"	1993-1994	Kivlin, Kearney	1930-1931
Brown, Ray	1961-1963	Elliott, Gene	1952-1953	Harkins, Redmond	1949-1950	"	1932-1934
Brusky, Tom	1953-1954	Elmore, Joe	1955-1956	Harman, Jim	1990-1992	Klein, Joseph	1927-1928
Bryant, Anthony	1982-1983	Epps, Wesley	1990-1993	Hartzog, Paul	1987-1990	"	1933-1934
Buehler, Brad	1991-1995	Evans, Hester	1932-1934	Haugh, Dennis	1949-1951	Klemm, Mark	2001-2005
Burdick, Bradley	1998-2002	Evans III, James	1998-2000	Havelka, Stanley	1947-1948	Knight, Malcolm	1971-1972
Burnes, Thomas	1947-1948	Everett, Zembra	1970-1974	Hawkins, Rick	1979-1981	Kocurek, Joe	1973-1974
Burns, Jeff	1963-1964	Ewen, Harold	1927-1929	Hebb, Maurice	1948-1950	Kohnle, Wilbur	1955-1959
"	1965-1967	Farias, Jerry	1981-1985	Hecklinski, Ron	1974-1975	Korthauer, Harry	1975-1976
Burns, Jeff	1993-1996	Farmer, Chavon	2005-2007	Hellett, Jack	1950-1954	"	1977-1978
Burns, Russell	1963-1965	Felder, Anthony	2003-2005	Helpert, Joshua	1996-1997	Krafka, Pat	1992-1993
Burton, Brian	2000-2002	"	2006-2007	Henderson, Charles	1945-1946	Krider, Jim	1950-1955
Burton, Darien	1998-2001	Felmet, Jon	1998-2000	Hendrieth, Tory	1982-1983	Krueger, Ron	1978-1980
Butler, Jesse	1997-1998	Fernandez, Robert	1973-1974	Herrera, Armando	1951-1954	Kruse, Larry	1979-1983
Caldwell, Keven	1985-1986	Fielder, Sherman	2000-2001	Herron, Frank	1928-1931	Kues, Glenn	1976-1977
Campbell, John	1948-1950	Figari, Dave	1927-1928	Higgins, Bill	1932-1933	Lancashire, Kyle	2002-2004
Campbell, Johnny	1979-1981	Finch, James	1951-1952	Hill, Anthony	2004-2005	Lancaster, Keith	1977-1978
Campbell, Mal	1961-1962	Flores, Chris	1985-1986	Hill, Christopher	1989-1992	Land, Taylor	2005-2008
Canfield, Mike	1964-1968	Flores, Ryan	1998-2002	Hill, Sam	1969-1970	Lanier, Eddie	2001-2003
Cantu, Memo	1962-1965	Ford, Steve	1962-1963	Hiltzman, Joseph	1945-1946	Lasponara, Jerry	1971-1973
Cantu, Octavio	1977-1979	Foskey, Brandon	2004-2006	Himmel, Jimmy	1932-1934	Latosinski, Ronald	1954-1958
Caprez, Joseph	1959-1960	Foster, Bobby	1990-1992	Hisert, Gerald	1959-1960	Laurent, Paul	1940-1941
Carlson, Eric	1991-1993	Fougerousse, Jim	1948-1952	Hobbs, Jay Lee	1986-1990	Lawley, Clamp	1947-1948
Carrigan, Robert	1961-1962	Franklin, Vernon	1982-1983	Hoes, Charlie	1982-1983	Leahy, Bill	1948-1951
		"	1984-1985	Hornbuckle, Sterling	1982-1983	Ledbetter, Mike	1983-1985

22 HISTORY & RECORDS

Lees, John 1963–1966
 Lewis, Doryea 1998–2000
 Liebscher, Carl 1945–1946
 Littleton, Jimmy 1977–1979
 Longoria, Gabe 1995–1997
 Loobeck, Don 1978–1980
 Lopez, Omar 1997–1998
 Lovorn, Shawn 1997–2001
 Lucash, Bob 1968–1972
 Luck, Robert 1956–1958
 Lunn, David 2005–2006
 Lyman, Ben 1998–2001
 Mack, Jesse 1972–1975
 Mackin, Frank 1940–1941
 Magnon, Mark 1989–1991
 " 1992–1993
 Marquez, Jonathan 2003–2005
 Marshall, Greg 1979–1980
 " 1981–1982
 Martin, Steve 1981–1983
 Martinez, Louis 2003–2005
 Masch, Harry 1962–1963
 Massey, Damon 1990–1991
 Masso, Ricky 2007–2008
 Mata, Henry 1973–1974
 Mathis, Troy 1983–1984
 Mattingly, Bill 1950–1951
 May, Tim 2002–2003
 McCloskey, Anthony 1930–1931
 McCloskey, Tom 1969–1972
 McClure, Brayde 1980–1984
 McClure, Dan 1976–1978
 McCorkle, Stan 2002–2004
 McDermott, Paul 1961–1965
 McGannon, Charles 1952–1955
 McGehee, Frank 1945–1946
 McGinn, Frank 1950–1951
 McGurn, John 1930–1931
 McLaughlin, Tommy 1950–1954
 Michel, Robert 1930–1931
 Michelled, Oscar 1945–1946
 " 1949–1951
 Mikes, Dustin 2001–2002
 Miller, Melvin 2002–2003
 Miller, Tony 1972–1974
 Mires, Donald 1954–1955
 " 1956–1957
 Minne, Jules 1994–1995
 Minne, John 1968–1972
 Montet, Ellis 1981–1984
 Moore, Greg 1972–1976
 Moore, John 1947–1948
 Morgan, Keith 1993–1995
 Moss, Michael 2006–2008
 Muhammed, Ishmael 1995–1997
 Mudd, Al 1961–1962
 Muleske, Joseph 1930–1931
 Mullenax, Taylor 2005–2008
 Munoz, Louis 1928–1931
 Myers, Greg 1983–1984
 Naff, Todd 1993–1997
 Nagel, Andrew 2003–2008
 Naiser, Louis 1933–1934
 Nash, Keith 1990–1991
 Necak, Aleksander 1987–1990
 Neu, Ed 1948–1952
 Nicholas, Leroy 1984–1986
 Nickleberry, Baron 1992–1995
 Obonna, Charles 1987–1991
 Oberfell, Jim 1961–1962

Obersteller, Jeff 2003–2007
 O'Brien, John 1927–1929
 O'Brien, Tom 1949–1950
 Odiorine, Fred 1953–1954
 O'Keefe, Jim 1958–1962
 O'Rourke, Burke 1948–1950
 Orlowski, Vic 1959–1963
 Otolski, Mike 1963–1967
 Ott, Edward 1927–1928
 Owens, Chris 2006–2007
 Paez, Fred 1952–1954
 Painter, Paul 1933–1934
 Pappas, George 1951–1954
 Paxton, Richard 1990–1993
 Pearce, Bob 1962–1963
 Pena, Frederico 1995–1997
 Perrault, Jack 1966–1967
 Petrosante, Joe 1953–1954
 Pfister, Joe 1952–1955
 Phillips, Jermaine 2000–2004
 Pierre, Daniel 2005–2006
 " 2007–2008
 Plaia, Paul 1973–1975
 Polk, Roland 1947–1948
 Pollock, Daniel 1933–1934
 Popp, Albert 1953–1957
 Popp, Charles 1955–1959
 Popp, Theodore 1956–1960
 Powers, Jack 1940–1941
 Pratt, Robert 1932–1934
 Priestley, Al 1967–1972
 Pugh, Mike 1976–1977
 Quintero, Kleber 1947–1948
 Rabalais, Clarence 1947–1948
 Ramsey, Lawrence 2001–2003
 Reeder, Bill 1949–1950
 Reeds, Raymond 1947–1948
 Rees, Jerry 1961–1965
 Reid, Bryce 2001–2002
 Reilly, John 1924–1925
 Reilly, Mike 1968–1971
 Reilly, Pat 1951–1953
 Reimer, Kenneth 1957–1961
 Reinking, Andrew 2007–2008
 Resende, Eduardo 1988–1990
 Richbource, Vince 1957–1961
 Roberson, Chris 1991–1992
 Roberts, Charlie 1983–1984
 Robinson, Chris 1988–1990
 Robinson, Marshall 1973–1975
 Rodriguez, Roberto 1930–1931
 Rodriguez, Aaron 1998–1999
 Roeder, Don 1949–1951
 Rollins, Joe 1976–1978
 Ross, Trumaine 2004–2005
 Russell, Cyrus 2001–2004
 Salinas, Amador 1952–1953
 Saltzstein, Tom 1984–1986
 Samuels, Jeff 2006–2008
 Sanchez, Dion 1996–1997
 Sanchez, Sonny 1998–1999
 Sanders, Joey 1986–1988
 Sanders, Rick 1981–1982
 Santos, Bobby 1963–1965
 Savacheck, Mike 1962–1963
 Schmotzer, Dan 1971–1974
 Schmotzer, Dave 1971–1974
 Schneider, John 1961–1964
 Schulz, John 1947–1948
 Schultz, Steve 1990–1991

Schultz, Stuart 1983–1986
 Scott, Howard 1967–1970
 Scrutchin, Michael 1995–1997
 Seale, Mike 1965–1969
 Seals, Phillip 1975–1977
 Seals, Paul 1968–1972
 Sears, Alan 1983–1984
 Selmo, Joe 1930–1931
 " 1932–1934
 Serrano, Bob 1945–1946
 Serranno, Bill 1945–1946
 Seymour, Larry 1972–1976
 Simpson, Scott 1993–1997
 Sims, George 1945–1946
 Skaer, Mike 1970–1972
 Slaughter, Daniel 1959–1960
 Smith, B. 1991–1993
 Smith, Chris 2004–2005
 Smith, Kevin 1992–1994
 Smith, Ronie 1985–1987
 " 1988–1989
 Smith, S. 1948–1949
 Soergel, Bob 1959–1960
 " 1961–1962
 Spears, Sam 1940–1941
 Stanford, Paul 1930–1931
 " 1933–1934
 Stanich, Cliff 1978–1980
 Steger, Mike 1989–1991
 Stepien, Carl 1965–1967
 Stewart, John 1974–1975
 Stewart, Bob 1980–1981
 Stone, Charles 1932–1933
 Stoner, Jason 1994–1998
 Stovall, Stephan 1984–1986
 Stump, Don 1952–1956
 Sturgis, Bill 1998–2000
 Sullivan, Barry 1952–1957
 Sullivan, Eugene 1927–1931
 Swanson, Alwin 1924–1925
 Taliaferro, Jerry 1965–1966
 Tanny, Jack 1963–1967
 Taylor, Charles 1984–1985
 Taylor, John 1967–1968
 Teasdale, Lachlan 1998–2001
 Templeton, Darren 1986–1989
 Terilli, Brad 1992–1993
 Terry, Rodney 1986–1990
 Thomas, A. 1993–1994
 Thomas, Art 1959–1960
 Thomas, J.J. 1992–1995
 Thomas, Terrance 2000–2002
 Thomas, Raynad 1987–1988
 Thompson, Darrell 2004–2006
 Threadgill, Gary 1982–1983
 Tomaszewicz, Pete 1954–1955
 Townsend, Chad 1990–1991
 " 1994–1995
 Trager, Richard 1998–2001
 Tullis, Will 2007–2008
 Turner, Lonnie 1984–1986
 Turnock, James 1930–1931
 Tuttle, George 1988–1990
 Tyszkiewicz, Art 1952–1953
 " 1954–1955
 Ulrich, Buddy 1940–1941
 Van Gale, Joe 1958–1960
 Vanselow, Richard 1964–1965
 Velasquez, Cruz 1961–1964
 Viers, Jason 1990–1992

Vignos, James 1924–1925
 Viola, Dennis 1965–1966
 Vogt, W. 1948–1949
 Voss, Jack 1969–1970
 Wade, Jim 1967–1971
 Wakefield, Kyle 2007–2008
 Walker, Eric 1992–1993
 Walls, John 1962–1966
 Walsh, Bill 1940–1941
 Ward, Greg 1992–1994
 Waterwall, Phillip 1958–1960
 Watson, Eugene 1985–1986
 Watson, Mark 2007–2008
 Weaver, Doug 1974–1978
 Weinstein, Shawn 2005–2008
 Wells, John 1965–1969
 West, Marcus 1980–1981
 Wheeler, Jimmy 1991–1994
 White, Phil 1960–1964
 Whitley, Cedric 1986–1989
 Whitney, Ron 1970–1973
 Whittington, Dwight 1986–1988
 Wiginton, Chuck 1985–1987
 Wiginton, Ricky 1986–1987
 Wilbourn, Robert 1980–1983
 Wilde, Tom 1971–1973
 Wilkins, Kenneth 1978–1980
 Wilkins, Shae 1995–1998
 Willet, Charlie 1959–1961
 Williams, Frank 1978–1980
 Williams, Nikell 1989–1990
 " 1991–1992
 Wilson, Chris 1992–1994
 Woeber, Edmund 1924–1925
 Wolf, Mark 1987–1990
 Wood, Donald 1995–1996
 Wright, Jimmy 1981–1983
 Wurtzinger 1930–1931
 Wynn, Donnie 1992–1994
 Wyrick, Dennis 1974–1977
 Young, Ed 1963–1965
 Zaiontz, Allen 1975–1979
 Zimmer, Jannik 2006–2008



Debbie Taylor, MEd
Director of Athletics

Debbie Taylor is in her seventh year as the director of Athletics at St. Edward's. She first came to the hilltop as the head volleyball coach in 1990 and has been an athletic administrator since 1995, promoted to associate athletic director in 1999 and to the director position in 2002. She created the Compliance Office in 1995 to help the university transition into NCAA Division II.

A former all-America volleyball player, Taylor received a bachelor's degree in Education from Southwestern University in 1986. During her tenure at Southwestern, Taylor established herself as one of the top volleyball players in the school's history. Her team advanced to the NAIA national tournament during the 1981 and 1983 seasons. She was an NAIA all-American in 1983 and 1984, and she was selected to the all-national tournament team in 1983. Taylor was named the Most Outstanding Physical Education Major in 1985 and was inducted into the Athletic Hall of Honor in 1990 and the Athletic Hall of Fame in 2008. She earned her master's degree in Physical Education and Educational Administration at Southwest Texas State University in 1992. Taylor served seven years as an officer for the American Volleyball Coaches Association serving as president in 1998. She was recognized for meritorious service by the United States Association of Volleyball in 1995 and served the state of Texas as an Impact Coach Certified Instructor.

As a coach, Taylor posted an overall record of 428–167 at St. Edward's. In 1991, 1996 and 1997, her team won the Heart of Texas Conference and, in 2001, won the Heartland Conference. In 1996, her team won the NAIA Southwest Region tournament championship. Overall she has coached four teams to the national tournament with two quarterfinal appearances. In 1990, her first year at St. Edward's, Taylor was named conference coach of the year, and she won the honor again in 2001. In 12 seasons, Taylor coached five conference most valuable players, seven conference freshmen of the year, 49 all-conference players, 67 academic all-conference players, 12 all-Americans and 11 scholar all-Americans.

As an administrator, Taylor was honored as the 1993 NAIA District IV Female Administrator of the Year and the 1997 NAIA Southwest Region Female Administrator of the Year. She has provided leadership to the Heartland Conference as chair of athletic directors. Taylor has also served on the NCAA management council, reinstatement committee and men's basketball regional ranking committee. Under Taylor's leadership as director of Athletics, the Hilltoppers have enjoyed 23 conference championships, 32 appearances in post-season play, three top-three national finishes and 22 conference Coach of the Year awards.

When asked if she misses coaching, Taylor will tell you that she's still coaching — she's just coaching the coaches.

Taylor and her husband, Robert, reside in Kyle.



Nikki Cockrell
Associate Director of Athletics for Facilities and Event Management

Nikki Cockrell begins her second year as associate director of Athletics for facilities and event management. She assists the director of Athletics in managing all aspects of athletic facilities, intercollegiate competition and campus recreation.

Cockrell previously served as the parks and recreation director for the City of Smithville, where she spent eight years. She initially joined the staff as manager of the Smithville Recreation Center in 1999 and was elevated to parks and recreation director in 2000. Cockrell managed four city parks, the city skate park and the 22,500-square-foot Recreation Center, overseeing 18 employees in the process. She was also involved in generating advertising, attracting fundraising and planning capital projects in the City of Smithville, as well as serving on numerous boards and committees within the community.

Cockrell is a 1999 graduate of UT–Austin, where she earned a bachelor's in Sport Management. While at UT, she was a three-year letter winner and one of the founding members of the Longhorn softball team, helping coach Connie Clark establish the team. Cockrell was named an academic and athletic all-American in 1998 and 1999, and was the NCAA Woman of the Year for the state of Texas in 1999. She was inducted into the UT Women's Athletics Hall of Honor in 2006, the first softball player inducted.

Cockrell currently resides in Austin.



Jennifer White
Assistant Director of Athletics for Student Services and Women's Basketball Head Coach

Jennifer White enters her sixth season as head women's basketball coach at St. Edward's and her third year as assistant director of Athletics.

As the assistant director of Athletics, she has myriad responsibilities that include being the liaison between Athletics and Residence Life, being heavily involved in student orientation, and taking on a leadership role within Athletics. White is also responsible for post-season awards, sits on numerous committees and serves as a mentor to new staff members within Athletics.

White came to the hilltop from the PlayStrong division of Ironsmith Corporation in Austin, which she developed. PlayStrong has received national and statewide recognition for its development of fundamental basketball skills and its training and conditioning programs.

Her education and basketball-playing experience began in 1979 at Louisiana Tech University in Ruston, La. During her time at Louisiana Tech, she was a member of the 1981 AIAW Division I and 1982 NCAA Division I national championship teams. In 1983, she earned a bachelor's degree in Physical Education, and she earned an MS in Physical Education from Louisiana Tech in 1985.

White served as an assistant coach to Leon Barmore with the Lady Techsters from 1985 to 1990. She then held an assistant coaching position at UT–Austin under Naismith Basketball Hall of Fame member Jody Conradt for three years.

Sports Information Office

Logan Lawrence
Sports Information Director
Office: 512-464-8810
Cell: 512-636-2779
E-mail: loganl@stedwards.edu
Basketball
Cross Country
Men's Soccer
Softball



Tim Hansen
Student Assistant
Office: 512-464-8810
E-mail: thansen@stedwards.edu
Baseball
Golf
Volleyball



Tori Martello
Student Assistant
Office: 512-464-8810
E-mail: vmartel@stedwards.edu
Tennis
Women's Soccer



Media Information

The 2008–2009 St. Edward's University media guides have been produced to assist you with your coverage of the Hilltoppers. Additional information, photographs and statistics are available upon request.

Covering Practice

Practice sessions are generally open to the media. Representatives of the media are encouraged to contact the St. Edward's University Sports Information Office to arrange easy access to players and coaches prior to or following practice. Practice times vary. Contact the St. Edward's Sports Information Office for practice times.

Phone Interviews

The St. Edward's University Sports Information Office requests media representatives arrange phone interviews at least one day in advance. Phone interviews can be arranged by calling the Sports Information Office. In accordance with university policy, individual phone numbers of student-athletes will not be given out.

On the Web

For the latest news regarding St. Edward's University Athletics, including updated statistics, results, press releases and historical archives, go to the Athletics' web pages at www.stedwards.edu/sports.

Sports Information Office fax: 512-428-1001

Media Outlets

Austin American-Statesman

PO Box 670
Austin, TX 78767
Phone: 512-912-2952
Fax: 512-445-3868

Associated Press–Texas

1005 Congress Ave., Ste. 995
Austin, TX 78701-2469
Phone: 512-472-4004
Fax: 512-469-0800

KVUE-24 ABC

3201 Steck Ave.
Austin, TX 78757
Phone: 512-459-6521
Fax: 512-533-2233

KEYE-TV CBS

10700 Metric Blvd.
Austin, TX 78758
Phone: 512-835-0042
Fax: 512-490-2111

KXAN-TV NBC

908 W. MLK BLVD.
Austin, TX 78701
Phone: 512-476-3636
Fax: 512-476-1520

KTBC-TV FOX

119 E. 10th St.
Austin, TX 78701
Phone: 512-476-7777
Fax: 512-495-7060

NEWS 8-Austin

1708 Colorado St.
Austin, TX 78701-1131
Phone: 512-531-8000
Fax: 512-531-1234



Debbie Taylor
Athletics Director



Melinda Terry
Associate Athletics Director
Compliance



Nikki Cockrell
Associate Athletics Director
Facilities and Events



Jennifer White
Assistant Athletics Director
Women's Basketball Head Coach



Mike Harris
Faculty Athletics
Representative



Logan Lawrence
Sports Information Director



Monica Baker
Administrative Assistant



Jennifer Knight
Office Specialist

Mailing Address

St. Edward's University, Athletics Office
3001 South Congress Ave., Austin, TX 78704
Athletics Fax: 512-416-5834
SID Fax: 512-428-1001

Administrative Staff

Debbie Taylor, Director of Athletics	Area Code: 512
Melinda Terry, Associate Director of Athletics for Compliance	448-8744
Nikki Cockrell, Associate Director of Athletics for Facilities and Events	233-1637
Jennifer White, Assistant Director of Athletics for Student Services	233-1495
Mike Harris, Faculty Athletics Representative	448-8590
Monica Baker, Administrative Assistant	448-8460
Jennifer Knight, Office Specialist	448-8480
Logan Lawrence, Sports Information Director	464-8810
Chris Magott, Associate Athletics Trainer	428-1378
Nicole Reimer, Assistant Athletics Trainer	416-5802

Coaching Staff

Rob Penders, Head Baseball Coach	448-8497
Chris Young, Assistant Baseball Coach	428-1053
Ryan Marks, Head Men's Basketball Coach	448-8591
Jon Havens, Assistant Men's Basketball Coach	428-1089
Jennifer White, Head Women's Basketball Coach	448-8590
JJ Riehl, Assistant Women's Basketball Coach	428-1031
Ann Mary Carney, Cheerleading and Dance Team Coach	637-5615
Tony Riehl, Head Cross Country Coach	428-1272
Jennifer McNeil, Head Women's Golf Coach	233-1654
Brian Young, Head Men's Soccer Coach	448-8507
Adrian Rigby, Assistant Men's Soccer Coach	428-1355
Nick Cowell, Head Women's Soccer Coach	428-1052
Jay Mason, Assistant Women's Soccer Coach	428-1054
Amy Coulter, Head Softball Coach	448-8494
Jessica Rogers, Assistant Softball Coach	428-1049
Russel Sterns, Men's and Women's Head Tennis Coach	448-8743
Simon Boyce, Men's and Women's Assistant Tennis Coach	637-5617
Sean Donahue, Head Volleyball Coach	428-1386
Kim Morgal, Assistant Volleyball Coach	233-1435



Chris Magott
Associate Athletics Trainer



Nicole Reimers
Assistant Athletics Trainer



Rob Penders
Head Baseball Coach



Chris Young
Assistant Baseball Coach



Ryan Marks
Head Men's
Basketball Coach



Jon Havens
Assistant Men's
Basketball Coach



JJ Riehl
Assistant Women's
Basketball Coach



Ann Mary Carney
Cheerleading Coach



Tony Riehl
Head Cross Country Coach



Jennifer McNeil
Head Women's
Golf Coach



Brian Young
Head Men's
Soccer Coach



Adrian Rigby
Assistant Men's
Soccer Coach



Nick Cowell
Head Women's
Soccer Coach



Jay Mason
Assistant Women's
Soccer Coach



Amy Coulter
Head
Softball Coach



Jessica Rogers
Assistant
Softball Coach



Russel Sterns
Head Tennis Coach



Simon Boyce
Assistant
Tennis Coach



Sean Donahue
Head
Volleyball Coach



Kim Morgal
Assistant Volleyball
Coach

When you arrive at our 160-acre hilltop campus, you'll find a balance of traditional and modern architecture that speaks to the university's rich past and exemplifies our bright future. You'll also discover that campus life extends far beyond the classroom. Whether it's working out in the fitness center after a swim, grabbing a cappuccino in Meadows Coffeehouse or catching up with friends in an outdoor courtyard, you'll find a rich and active community at St. Edward's.

Main Building

A Texas Historic Landmark and one of several campus buildings on the National Register of Historic Places, Main Building sits on one of the highest elevation points in Austin and overlooks the city's skyline. The university celebrated the building's centennial in 2003.

Robert and Pearle Ragsdale Center

Named for Texas aviation pioneers Robert and Pearle Ragsdale, the center offers lectures, free movies and special events with a wide range of services and conveniences inside including Meadows Coffeehouse, student lounges, a computer center, a game room, South Congress Market (the university dining hall), conference and study rooms, and the Student Life Office.



Recreation and Convocation Center

Located in the heart of campus, the Recreation and Convocation Center is a full-featured modern facility equipped with a fitness center, a six-lane pool, four racquetball/handball courts, two full-size basketball floors and space to display all the Hilltopper trophies.

Grey Rock Golf Club

Originally opened in 1992, the Grey Rock Golf Club is 15 minutes from downtown Austin on 160 acres of rolling hill country. Designed by Jay Moorish, this course offers a classic-style layout in championship condition with a wide range of play for all skill levels. The course has been cited in both regional and national golf magazines as one of Texas' best daily fee courses.

Diane Daniels Field

Built in 1988, Diane Daniels Field is the home of the Hilltopper softball team. It was dedicated and named on April 10, 1990, in honor of Diane Daniels, a physical education instructor and first female coach at St. Edward's. The field includes enclosed dugouts, a 2,800-square-foot covered batting facility and tiered bleacher seating for spectators.



Lucian-Hamilton Field

Built in 1968, Lucian-Hamilton Field provides an on-campus facility for the men's baseball team. The field is named for longtime athletics director Brother Lucian Blersch, CSC, and former men's baseball coach Tom Hamilton. The field also features a batting cage, press box, concession stand and tiered seating for spectators.



Brother Emmett Strohmeyer Tennis Courts

Built in the late 1960s, the tennis courts are named in honor of Brother Emmett Strohmeyer, CSC, a legendary tennis coach at St. Edward's who amassed 25 consecutive conference championships. Five tennis courts provide a playing area for both the men's and women's tennis teams.



Soccer Field

In 2004, St. Edward's unveiled a new soccer field for men's and women's soccer. The field sits just below Main Building and overlooks the downtown Austin skyline. A walking/running track encircles the new field.





George E. Martin, PhD

President

Since becoming the 23rd president of St. Edward's University on July 1, 1999, George E. Martin has led the university's collaborative effort to attain national recognition as one of the best small universities in the country. That effort has already achieved results. *U.S. News & World Report* has ranked St. Edward's among the top 25 master's-granting universities in the West for the past five years — recognition bestowed on only three other institutions in Texas.

In the early days of his presidency, Martin introduced a vision and a set of seven strategic priorities focusing on student enrollment, faculty recruitment and retention, curricular and co-curricular programs, new facilities, technology development, fundraising, and marketing. These strategic priorities, combined with an ambitious master plan, define the future direction of the university.

Progress toward these goals has been tremendous. Traditional undergraduate enrollment has grown by 60 percent since 1999 while maintaining a low student-faculty ratio. The university's exceptional faculty has increased by 47 percent. New facilities, such as Trustee Hall and the 65,000-square-foot John Brooks Williams Natural Sciences Center–North Building, have elevated learning with the latest instructional technology. Two new residence halls — Basil Moreau Hall and Jacques Dujarié Hall — have changed the heart of campus with feature-rich student living.

As the campus evolves to meet the needs of a growing student body, Martin is committed to ensuring the university stays true to its Holy Cross mission: to deliver a personalized, transformative educational experience in a diverse and supportive community.

Martin says the role of president is not one of power but of possibility. He leads by listening, thinking, sharing energy and ideas, and encouraging creativity within the culture of the institution.

Born: Jan. 10, 1944, Brooklyn, N.Y.

Education: Bachelor's degree from St. John's University; master's and doctoral degrees from Fordham University

Involvements: Martin volunteers at a number of civic and artistic organizations, including the Library Advisory Board, the Ballet Austin Board of Directors, the United Way Community Board, the Leadership Austin Advisory Board, and is an Honorary Advisory Council Member of the Austin Symphony. He serves on the boards of the Council of Independent Colleges, Association of Catholic Colleges and Universities, Independent Colleges and Universities of Texas, and Saint Mary's College. He is a member of the American Council on Education's Commission on Leadership and Institutional Effectiveness and the Texas Campus Compact. Martin has served as a conference president for the NCAA Division II Heartland Conference.

Career highlights: Martin entered faculty service in 1969 as a member of the St. Peter's College Political Science Department and became chairman in 1976. In 1985, he was named academic dean of St. Peter's College and served in that role until 1991, when he became academic vice president. He was inaugurated as president of St. Edward's University in October 1999.



Sandra Pacheco, PhD

Vice President for Student Affairs

Sandra Pacheco is a native Texan, born and reared in Houston. She received a BS in psychology from the University of Houston, an MS in Psychology from Oklahoma State University and a PhD in Counseling Psychology from UT–Austin.

Pacheco came to St. Edward's University in May 1981 as a psychological counselor. She was director of the counseling center from 1982 to 1989, until she became dean for Student Development. In 1993, she was promoted to associate vice president for Student Services. Presently she is vice president for Student Affairs.

In 2004, Pacheco was selected to participate in the Kellogg Minority-Serving Institutions Leadership Fellows Program by the Hispanic Association of Colleges and Universities. The program is designed to increase the number of Hispanic senior-level leaders at Hispanic-serving institutions. Pacheco was one of 10 fellows nationally selected by HACU.



Mike Harris, PhD

Faculty Athletics Representative

Michael Harris is a professor of Accounting in the School of Management and Business. He has taught at St. Edward's since 1998. He is also a certified public accountant with more than 35 years of professional experience, including serving as chief financial officer for two companies. Harris earned his doctorate at UT–Austin. In 2004, Harris received the university's Distinguished Teaching Award.

Outside the classroom, Harris is involved in competitive swimming and long distance running. Harris lives in Austin with his wife, KK, a healthcare consultant to both the City of Austin and the State of Texas.

2008–2009 Cheerleaders

The St. Edward's University cheerleaders are dedicated athletes who represent the university by participating in national competitions. They also lead the charge in promoting school spirit and enthusiasm across campus in support of Athletics. When they are not on the competition floor or the sidelines cheering, they serve as representatives of the student body, faculty and staff through community service.



Ann Mary Carney | Coach

Carney enters her third year of coaching the St. Edward's cheerleaders and has been a part of the university community for 10 years as an adjunct faculty member teaching dance courses. As a coach she strives to instill the values of commitment and responsibility in a positive environment. Carney has a BS degree from Texas State University in Dance Education. She also holds an MFA from Mills College in Performance and Choreography. As head coach, Carney brings her skills as a teacher, performer, former cheerleader and gymnast along with her aesthetic sensitivity to the St. Edward's spirit program.



Erin Conant
Senior
Houston
St. Pius X HS



Brittany Jackson
Senior
Round Rock
Round Rock HS



Angie Caballero
Junior
Los Fresnos
Los Fresnos HS



Derrick Heslip
Junior
Pflugerville
Hendrickson HS



Candace Cabello
Sophomore
Austin
Plano East HS



Danny DeLosSantos
Sophomore
Mercedes
Mercedes HS



Danielle Garcia
Sophomore
San Antonio
University of the Incarnate Word



Beth Jackson
Sophomore
Dripping Springs
Dripping Springs HS



Veronica Trevino
Sophomore
Palmview
La Joya HS



Austin Cassel
Freshman
Plano
Plano HS



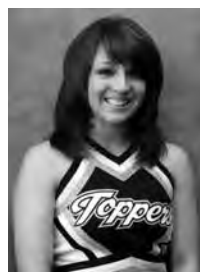
Ashley Hughes
Freshman
Mission
Sharyland HS



Christina Jasinski
Freshman
Austin
St. Michael's Academy



Lauren Lev
Freshman
Richmond
Foster HS



Jessi Molohon
Freshman
Spring
Klein HS



Jillian Rootring
Freshman
Yorba Linda, Calif.
Esperanza HS



Jade Shapiro
Freshman
Huntington Beach, Calif.
Edison H. S.



Topper

Topper arrived on the hilltop in 2002 as the university's official new mascot. Topper's mission includes working with the cheerleaders, dance team and HillRaisers to promote school spirit across campus. Topper can occasionally be seen roaming campus.

HillRaisers

The HillRaisers are a student spirit group open to all St. Edward's University students. Founded in 2007, the group seeks to have a visible fan presence at all home athletic events. The HillRaisers also spread spirit off the hilltop with bus trips to away games at rival schools. In addition to cheering on the Hilltoppers, the HillRaisers instill school spirit around campus. Spirited students join the HillRaisers by purchasing a T-shirt at any home athletic events, and wearing it to athletic events and cheering on the Hilltoppers.

Dance Team

The St. Edward's University Sapphires dance club performs jazz, pom and hip-hop styles of dance. The Sapphires appear at volleyball and basketball games and at events on campus.



2008–2009 Sapphires Roster

Maria Espinoza

Senior
Round Rock
Pflugerville HS

Cristal Gonzales

Sophomore
Mission
Mission HS

Carolina Corkill

Sophomore
Riviera
Science Academy of South Texas

Kenjewel Hayes

Sophomore
Round Rock
Stony Point HS

Aspen Leach

Freshman
Austin
Austin HS

Marcella Maxwell

Sophomore
Round Rock
McNeil HS

Caitlin Lott

Junior
Austin
James Bowie HS

Meg Seeger

Freshman
Plano
John Paul II HS

Ashley Wainscott

Sophomore
Austin
James Bowie HS

CO-CAPTAINS:

Veronica Hernandez

Senior
El Paso
Loretto Academy HS

Kaci Polanco

Junior
Austin
James Bowie HS

St. Edward's University Hall of Fame

Eligibility for Hall of Fame members is defined by criteria that includes being out of school for at least five years; receiving national recognition as an athlete, coach or administrator; being of good character and reputation; and having no stronger connection with another university. Anyone can nominate a person for consideration to the Hall of Fame.

Class of 1987

Bob Beck, '71, men's basketball
 Joe Beck, '58, men's basketball
 Brother Lucian Blerch, CSC, '34, administration
 Toney Burger, '30, baseball
 Joseph Byrne, baseball
 Billy Disch, baseball
 Zembra Everett, '74, men's basketball
 Frankie Farley, '25, baseball, football and men's basketball
 Tom Hamilton, baseball
 Lou Hertenberger, '30, football
 Brother Edmond Hunt, CSC, service
 Harold Jansing, '30, baseball, football and men's basketball
 Bob Lucash, '72, men's basketball
 Roger Metzger, '70, baseball
 Ed Norris, '41, coach
 Michael Emmett O'Shaughnessy, '28, baseball and men's basketball
 Julio Rojas, '67, tennis
 Brother Emmett Strohmeier, CSC, coach
 Sabas Zapata, '68, track and field

Class of 1989

Jack Chevigny, coach
 Diane Daniels, coach
 Marvin Durrenberger, '27, football and men's basketball
 Dan Dwyer, '63, tennis
 Dave Eckstein, '62, men's basketball
 Ed Fleming, '36, coach

Bob Hilliard, '80, tennis
 Kathryn Hopkins, '83, volleyball and women's basketball
 John Kleinow, baseball
 John Lucas, '65, track
 Jack Meagher, '26, football
 Ed Neu, '52, baseball and men's basketball
 T.J. O'Connor, '50, football and men's basketball
 Jim O'Keefe, '62, men's basketball
 Burke O'Rourke, '51, baseball
 Vince Richbourg, '61, baseball and men's basketball
 Al Vogt, '30, football
 Edward Woeber, '25, football and men's basketball

Class of 1991

Mike Canfield, '68, men's basketball
 Julieanne De Ybarrondo, '85, volleyball
 Steve Dunlap, '81, golf
 Brother William Dunn, CSC, service
 James Ellison, '79, baseball
 Brother Walter Foken, CSC, administration
 Paul McDermott, '65, men's basketball
 Clare McFadden, tennis
 Kevin Mullins, '83, tennis
 Mike Otolski, '67, baseball and men's basketball
 Al Popp, '57, men's basketball
 Charlie Popp, '59, men's basketball
 Ted Popp, '60, men's basketball

Class of 1993

DeNell Davis, '87, women's basketball
 Ginny Green, '85, volleyball and women's basketball
 Kelly Latz, '80, baseball
 Richard Poppe, '72, tennis
 Henry Thames, '83, baseball
 John Wells, '69, men's basketball

Class of 1995

Ron Bella, '56, men's basketball
 Brother Elmo Bransby, CSC, service

Julie Chauvin, '89, cross country, softball, volleyball and women's basketball
 Joe Devaney, '38, football
 Lisa Hudson, '90, women's basketball
 Rick Lindell, '80, baseball

Class of 1997

Jay Lee Hobbs, '90, men's basketball
 Melanie Hudkins, '92, volleyball
 Ian Lipski, '93, soccer
 Tina Tindell, '91, softball
 Greg Trliceck, '85, baseball

Class of 1999

Nace Formagus, '42, football
 Glenn Hinkle, service
 Paula Jasek, '93, softball and women's basketball
 Taj McWilliams-Franklin, '93, women's basketball
 Dairan Talley, '95, soccer

Class of 2002

Heather Arnold-Stoner, '98, volleyball
 Kellie Bilski-Geraci, '95, softball
 Rhonda Darling, '94, women's basketball
 Myron Gilmore, '81, baseball
 Gabriel Jones, '94, soccer
 Kirk Wagner, '94, soccer
 Heather Young-Forshay, '96, soccer

Class of 2004

Suzy Bayer, '99, volleyball
 Joe Kucera, '95, tennis
 Casey Lucas, '97, tennis
 Jimmy Wheeler, '94, men's basketball

Class of 2006

Julie Burlison-Grant, '96, volleyball
 Aaron Farris-Seafous, '92, women's basketball
 Karl Jauhainen, '86, tennis
 Kevin Karo, '91, baseball
 Jimmy Wheeler, '94, men's basketball



Heartland Conference

The Heartland Conference is an NCAA Division II conference, founded in 1999, consisting of nine schools, six from Texas and one each from Missouri, Kansas and Oklahoma. The schools in the Heartland Conference stretch from as far north and east as Jefferson City, MO., as far south as Laredo, and as far west as Odessa.

The following schools were founding members: St. Edward's University (Austin), University of the Incarnate Word (San Antonio), St. Mary's University (San Antonio) and Lincoln University (Jefferson City, MO.). The following schools were added at later dates: Dallas Baptist University (Dallas) in 2004, Oklahoma Panhandle State University (Goodwell, Okla.) in 2002, UT–Permian Basin (Odessa) in 2006, Texas A&M–International (Laredo) in 2006, and Newman University (Wichita, Kan.) in 2006.

The universities in the Heartland Conference offer a wide range of undergraduate, graduate and professional programs. Some of the academic programs sponsored by member institutions are among the best in the nation, including the Business Administration program at the University of the Incarnate Word, the Nursing program at Lincoln University, the Pre-Medicine program at St. Edwards University, the International Relations and Pre-Medicine programs at St. Mary's University, and the Agriculture and Elementary Education programs at Oklahoma Panhandle State University.

Among the many accomplishments of these institutions are national championships in baseball, golf, swimming, basketball and softball as well as national rankings in all sports. The strength of the student-athlete concept is well-supported by the many NCAA scholar-athletes in each school, the high cumulative GPA of the student-athletes in each school and the high number of student-athletes who graduate from each institution in the Heartland.

The Heartland Conference is the newest of the NCAA Division II conferences. At the present time, there are 24 conferences in NCAA Division II, totaling almost 300 institutions across the nation.

DALLAS BAPTIST

Location	Dallas
Founded	1898
Enrollment	5,244
Nickname	Patriots
Colors	Navy, Red and White
President	Gray Cook, DMin
Athletic Director	Ryan Erwin
Web Site	www.dbu.edu/athletics

INCARNATE WORD

Location	San Antonio
Founded	1881
Enrollment	4,300
Nickname	Cardinals
Colors	Red, Black and White
President	Louis J. Agnese, PhD
Athletic Director	Mark Papich
Web Site	www.uiw.edu/athletics

LINCOLN

Location	Jefferson City, Mo.
Founded	1866
Enrollment	3,600
Nickname	Blue Tigers
Colors	Navy and White
President	Carolyn R. Mahoney, PhD
Athletic Director	Betty Kemna
Web Site	www.lincolnu.edu/athletics

NEWMAN

Location	Wichita, Kan.
Founded	1933
Enrollment	2,200
Nickname	Jets
Colors	Crimson and Blue
President	Noreen Carrocci
Athletic Director	TBA
Web Site	www.newmanu.edu/athletics

PANHANDLE STATE

Location	Goodwell, Okla.
Founded	1909
Enrollment	1,300
Nickname	Aggies
Colors	Red, White and Blue
President	David A. Bryant, PhD
Athletic Director	Jerry Olson
Web Site	www.opsu.edu/athletics/athletics.htm

ST. EDWARD'S

Location	Austin
Founded	1885
Enrollment	5,317
Nickname	Hilltoppers
Colors	Navy and Gold
President	George E. Martin, PhD
Athletic Director	Debbie Taylor
Web Site	www.stedwards.edu/sports

ST. MARY'S

Location	San Antonio
Founded	1852
Enrollment	4,500
Nickname	Rattlers
Colors	Blue and Gold
President	Charles Cotrell, PhD
Athletic Director	Charlie Migl
Web Site	www.stmarytx.edu/athletics

TEXAS A&M–INTERNATIONAL

Location	Laredo
Founded	1969
Enrollment	4,917
Nickname	Dust Devils
Colors	Maroon and Metallic Silver
President	Ray Keck, PhD
Athletic Director	Debbie Snell
Web Site	www.godustdevils.com

UT–PERMIAN BASIN

Location	Odessa
Founded	1969
Enrollment	3,500
Nickname	Falcons
Colors	Orange and Black
President	David Watts, PhD
Athletic Director	Steve Aicinena
Web Site	www.utpb.edu



A nationally recognized university, St. Edward's offers a close-knit academic community with small classes and personalized attention. For more than a century, the university has provided higher education opportunities to students of all ages and of varied cultural, religious, educational and economic backgrounds.

In 2000, the university adopted a vision to become recognized as one of the best small universities accredited in the United States. We've made significant progress toward this goal, including being ranked among the top 25 master's-granting universities in the West in *U.S. News & World Report* for five years running.

The university has received many other commendations, including national recognition

from *Hispanic Outlook in Higher Education* magazine as one of the "Top 100 Schools Graduating Hispanics"; inclusion in *Colleges with a Conscience*; and high marks in the National Survey of Student Engagement, where students' opinions of St. Edward's exceeded the national average in all categories.

St. Edward's is celebrated for anticipating and responding to our changing world with innovation. Working alongside our dedicated faculty, students are prepared to unleash their potential as they build a foundation for lifelong learning, achievement and personal satisfaction in career and community life.

CONGREGATION OF HOLY CROSS

Think critically, act ethically, appreciate diversity, strive for social justice and serve the community: These are the values of the Congregation of Holy Cross, which founded St. Edward's more than a century ago. The tenets continue to drive the university's mission today and transform our students into global citizens ready for the challenges of our complex world.

5: St. Edward's exceeded the national average in all five benchmark areas of the National Survey of Student Engagement: level of academic challenge, active and collaborative learning, student interactions with faculty, enriching educational experiences, and supportive campus environment.

5: St. Edward's won five out of 13 Heartland Conference championships for the 2007–2008 athletic season.

14: With a growing campus of more than 5,300 students, St. Edward's maintains a low student-to-faculty ratio of 14:1 in the traditional undergraduate college.

25: St. Edward's has been named among the top 25 master's-granting institutions in the western region by *U.S. News & World Report* for six consecutive years.

100%: St. Edward's puts a priority on buildings and technology that enhance learning. In fact, 100 percent of our classrooms have advanced computer and multimedia technology.

ST. EDWARD'S UNIVERSITY AT A GLANCE

- Tuition: \$24,040
- Room and board: \$6,206 to \$9,020
- Undergraduate Students: 3,430
- 60% Female, 40% Male
- Diversity:
 - 32% Hispanic
 - 3% African American
 - 3% Asian/Pacific Islander
 - 2% International
- 39 states represented
- 40 countries represented

Application Deadlines:

- Priority Decision: Feb. 1 (for scholarship consideration and the best financial assistance packages)
- Regular Decision: May 1
- Spring Application Deadline: Nov. 15
- Nonrefundable Deposit Deadline: May 1 (or two weeks after notification of admission if you are accepted later than May 1)



Austin: Life in the Capital City

Austin is down-home but sophisticated. Laid-back but bustling with energy. Rich in tradition but eclectic. With its natural beauty, vibrant nightlife, big business and casual atmosphere, Austin regularly makes the grade as one of the country's best places to live.

Natural Wonder

Home to 200 parks and three lakes, Austin is full of natural beauty. Zilker Park, just 10 minutes from campus, includes 351 acres along the shores of Lady Bird Lake and offers the Zilker Botanical Garden, a hike-and-bike trail, picnic areas, an outdoor theater and canoe rentals. Neighboring Barton Springs, Austin's three-acre natural swimming pool, is a town favorite on hot summer days with its constant 68-degree waters.

Live Music Capital of the World

Music is at the heart of Austin culture. From country to blues, rock to hip-hop, Austinites find a sound to suit every taste in the more than 200 live music venues around town. The city also hosts the South by Southwest Music Festival, a massive industry event that gathers more than 1,000 fresh new bands from around the world.

On the Rise

Forbes magazine recently rated Austin among the best places to do business and advance your career. A recognized high-tech hub, the "Silicon Valley of Texas" has hundreds of semiconductor, computer and software companies. Other industries, such as film, multimedia and music, are also booming. Productions ranging from *A Scanner Darkly* to the *Friday Night Lights* TV show have been shot here.

2 Austin was named the second best place to live in the United States by *Money* in 2006, the second most popular destination by *Travel + Leisure* along with being named one of the coolest cities in the country by *Kiplinger*. It's the combination of Texas charm and big-city sophistication that led *Fortune* magazine to proclaim, "Austin is what many a United States city longs to be ... It has style."

1 in 8 Austin is the capital of Texas and the sixteenth-largest city in the United States. Of the more than 700,000 residents, one in eight is a college student.

69° Austin enjoys a temperate climate with 300 days of sunshine, mild winters and an average annual temperature of 69 degrees.

309 Standing a stately 309 feet, the Capitol building in Austin was constructed in 1888 of Texas pink granite.

1.5 million Austin loves bats — 1.5 million of them to be exact. The destination city for the largest urban bat colony in North America from March to November, Austin shows its bat pride with landmark sculptures and regular gatherings on the Ann W. Richards Congress Avenue Bridge to catch the bats' sunset flight.



Back Row (L-R): Cory Griffin, Cameron Taggart, Nate Barstad, Taylor Mullenax, Chase Spruiell, Mark Watson. Middle Row (L-R): Taylor Land, Kyle Wakefield, James Wiseman, Tylor Carr, Reggie Shanks, Justin Monk, Jannik Zimmer, Jeff Miner. Front Row (L-R): Volunteer Assistant Chris Crevelone, Graduate Assistant Luke Hemenover, Head Manager Jack Dorr, Manager Paul Alvarez, Jeff Samuels, Ricky Masso, Greg Westry, Bobby Watkins, Charlie Spector, Manager Alex McAdams, Head Coach Ryan Marks, Volunteer Assistant David President, Assistant Coach Jon Havens.