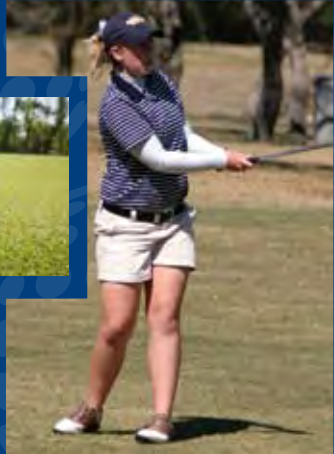




2008—2009



# Women's Golf

## 2008–2009 Schedule

DATE	DAY	TOURNAMENT	COURSE	LOCATION
<b>SEPTEMBER</b>				
8–9	M–TU	Drury Fall Shootout	Murder Rock CC	Hollister, Mo.
15–16	M–TU	Northeastern State Golf Classic	Cherry Springs GC	Tahlequah, Okla.
22–23	M–TU	Bubba Watson Invitational	Stonebrook GC	Pace, Fla.
<b>OCTOBER</b>				
6–7	M–TU	Broncho Masters Fall Classic	Fairfax GC	Edmond, Okla.
<b>FEBRUARY</b>				
23–24	M–TU	Lady Rattler Roundup	Dominian CC	San Antonio, Texas
<b>MARCH</b>				
<b>2–3</b>	<b>M–TU</b>	<b>St. Edward's Invitational</b>	<b>Grey Rock GC</b>	<b>Austin, Texas</b>
9–10	M–TU	Peggy Kirk Bell Invitational	Tuscawilla CC	West Palm Springs, Fla.
23–24	M–TU	InterWest Chico State Invite	Butte Creek CC	Chico, Calif.
<b>APRIL</b>				
6–7	M–TU	Grand Canyon Women's Invitational	Palm Valley GC	Goodyear, Ariz.
13–14	M–TU	Tarleton State Coca-Cola Classic	Squaw Creek GC	Granbury, Texas
20–21	M–TU	Heartland Conference Championship	Horseshoe Bay Resort	Horseshoe Bay, Texas
<b>MAY</b>				
2–5	SA–TU	NCAA West Regional	TBA	TBA
13–16	W–SA	NCAA National Championship	TBA	TBA

**Home tournaments listed in bold**

All times are Central Standard Time and are subject to change.

April Fields





Head Coach Jennifer McNeil with junior Emily Kvinta after finishing as runner-up at the St. Edward's Invitational.

## Quick Facts

Location: Austin, Texas

Founded: 1885

Enrollment: 5,320

Colors: Navy and Gold

Nickname: Hilltoppers

Affiliation: NCAA Division II

Conference: Heartland

President: Dr. George E. Martin

Director of Athletics: Debbie Taylor

Associate Director of Athletics for Compliance: Melinda Terry

Associate Director of Athletics for Facilities and Events: Nikki Cockrell

Assistant Director of Athletics: Jennifer White

Faculty Athletics Representative: Dr. Michael Harris

Administrative Assistant: Monica Baker

Sports Information Director: Logan Lawrence

St. Edward's University Athletics Annual Report	2
2008–2009 Season Preview	4
Coach Profiles	5
Player Profiles	5
2007–2008 Year in Review	8
History & Records	9
St. Edward's University Athletics Administration	11
Staff Directory	13
Facilities & Equipment	14
Administration Bios	15
Spirit Program	16
Hall of Fame	18
Heartland Conference	19
About St. Edward's University	20
This is Austin	21

## 2 ATHLETICS ANNUAL REPORT

### What It Means to Be a Student-Athlete at St. Edward's

**Athletics at St. Edward's University goes far beyond simple wins and losses. It extends past conference championships and national tournaments. At St. Edward's, student-athletes are challenged to think critically and creatively and to strive for academic excellence. They participate in meaningful service activities and make a difference in the community. In other words, they embody the mission of St. Edward's.**

### Academic Excellence

- Sixty-three percent of all student-athletes at St. Edward's posted a 3.0 GPA or better during the Fall 2007 semester. Thirty-four percent had a 3.5 GPA or better. Sixty-seven percent of all student-athletes at St. Edward's had a 3.0 GPA or better during the Spring 2008 semester. Forty percent posted a 3.5 GPA or better.
- Ten of 13 teams registered a GPA better than 3.0 in the Fall 2007 semester. Eleven of 13 teams achieved the same feat in Spring 2008. Women's tennis, women's soccer and volleyball all achieved team GPAs above 3.5 for the 2007–2008 academic year. Baseball, men's basketball and women's tennis compiled the highest GPAs in the Heartland Conference in their respective sports. Women's soccer, volleyball and men's soccer each received a team academic award by their respective sport governing body.
- Twenty-eight student-athletes at St. Edward's achieved a 4.0 GPA in Fall 2007, while 29 student-athletes earned a 4.0 GPA in Spring 2008. Six student-athletes have a cumulative GPA of 4.0.
- One hundred thirty student-athletes received academic all-conference honors during the 2007–2008 season. Seven students were named academic all-district, three academic all-Americans and seven Arthur Ashe Jr. Sports Scholars.
- St. Edward's has an academic success rate — or graduation rate — of 82 percent among its student-athletes, which is the second-highest in the Heartland and Lone Star conferences combined. This is 13 percent higher than the NCAA Division II aggregate academic success rate of 69 percent.

## 3.20

The combined GPA for all student-athletes at St. Edward's during the 2007–2008 academic year



### Community Service

Student-athletes at St. Edward's assisted more than 40 campus and community organizations during the 2007–2008 academic year. Highlights included:

#### Copperfield Elementary Math Night

Every year at Super Bowl time, Hilltopper athletes join students from Copperfield Elementary for a night of math and mentoring. The annual event brings together parents, students and more than 100 student-athletes for games and activities that allow the children to show off their math skills and discover new ones.

## 2,510

Hours of community service performed by student-athletes in 2007–2008

### Move-in Day

One hundred sixty-five student-athletes came together on move-in day and spent a total of 330 hours helping incoming freshmen and their parents unload suitcases, boxes and everything else that came with them to St. Edward's into the university residence halls.

### Facility Upgrades

- Prior to the 2008 season, St. Edward's completed its renovation of the baseball dugouts and batting cage facility. The newly built cinder block dugouts enhance the baseball field while the additional storage areas provide much-needed space for equipment and supplies. The batting cage was updated with concrete and turf that improved the overall quality of the hitting facility.
- The university recently completed work on a 2,800-square-foot covered batting facility at Diane Daniels Softball Field. The facility is lighted and open-air with the possibility of being enclosed in the future. The batting cage features two netted areas for hitting, a large space for a variety of drills and turf for safety.
- The student-athlete weight room was given a facelift last spring. Several new pieces of Precor and functional-training equipment were added and athletic rubber flooring was installed to enhance the Hilltopper strength-training and weight room.

## Athletic Excellence

- After taking nine of 13 Heartland Conference championships in 2006–2007, five teams took home conference championships in 2007–2008. Women's soccer, men's basketball, baseball, men's golf and women's golf all achieved top honors.
- Eight teams were ranked nationally during the 2007–2008 season and six teams made appearances in the national tournament with two top-three finishes. Men's golf tied for second place, and the softball team tied for third place.
- Student-athletes at St. Edward's garnered Player of the Week honors 45 times during the 2007–2008 season. Fifty-seven student-athletes received all-conference honors, with four receiving Heartland Conference Player of the Year honors and three being named Freshman of the Year. Sixteen student-athletes received all-region recognition, and seven student-athletes were all-Americans.



## 2nd Place

The men's golf team finished the 2007–2008 season tied for second place in the NCAA Division II National Tournament.

## 3rd Place

The softball team tied for third place in the NCAA Division II national tournament.

## Staffing Honors

St. Edward's University coaches combined to win three Heartland Conference Coach of the Year honors during the 2007–2008 season. **Ryan Marks** (men's basketball), **Jennifer McNeil** (women's golf) and **Ryan Murphy** (men's golf) each were named coach of the year for their respective sports. McNeil and Murphy were also named GCAA South Central Regional Coaches of the Year.

**Amy Coulter** (softball) serves on the NCAA South Central Regional ranking committee and is chair of the Heartland Conference softball coaches. Coulter was named NFCA Regional Coach of the Year.

**Sean Donahue** (volleyball) serves as volleyball chair for the Heartland Conference, is a rater for the NCAA Division II top-25 poll and represents the Heartland Conference volleyball coaches on the NCAA volleyball coaches committee.

**Ryan Marks** (men's basketball) serves as a Heartland Conference congressman to the National Association of Basketball Coaches Division II Congress and is a member of the NCAA Division II men's basketball South Central Regional ranking committee.

**Jennifer McNeil** (women's golf) was an NCAA Division II representative and rater for the National Golf Coaches Association during the 2007–2008 academic year.

**Melinda Terry** (director of sports medicine) is president of the Southwest Athletic Trainers' Association and executive board president of the National Athletic Trainers' Association convention planning committee.

**Jennifer White** (women's basketball) serves on the NCAA South Central Regional ranking committee for women's basketball.

**Brian Young** (men's soccer) was one of three individuals to serve on the Midwest Regional ranking committee for the National Soccer Coaches Association and Adidas in 2007.

**Logan Lawrence** (sports information) serves on the College Sports Information Directors of America publications committee.

"The environment at St. Edward's demonstrates a lifelong commitment to achieve excellence in all aspects of my life, which helps me become an individual with the inner drive and desire to meet and reach my personal goals and values as I continue my life after St. Edward's."

**Kelli Payton, '10 | Women's Basketball**





Emily Kvinta

## BREAKING THROUGH

The 2008–2009 St. Edward's University women's golf team will try to do what no other Hilltopper women's golf team has been able to do: take a trip to the national tournament.

After two years of building the team, Head Coach **Jennifer McNeil** has led the program to two-straight Heartland Conference championships and three-straight NCAA West regional tournaments. Last season, the Hilltoppers blasted the field at the Heartland Conference tournament, winning by 24 shots.

"Winning back-to-back conference championships was of extreme importance to last year's group and one goal we were set on accomplishing,"

says McNeil. "When we played in the regional tournament, we played three of our best and most consistent rounds of golf. Despite not advancing, I was very proud of the efforts and contributions of each player."

At the NCAA Division II West regional tournament, St. Edward's trailed second-place Tarleton State by only two strokes heading into the final round. The Hilltoppers played their best three rounds of the year, yet ended in fourth position, which ended the season for St. Edward's.

"Last season was full of many successes," says McNeil. "We worked to peak in March and truly accomplished our goal. We were playing our best golf heading into the postseason."

## OUTLOOK

This year, the St. Edward's team has its work cut out for it, returning just four players who saw action last season. Included in that group is junior **Emily Kvinta**, who was limited to just two tournaments last season due to injury. She was a first-team all-conference selection her freshman and sophomore seasons, as well as Heartland Conference Freshman of the Year and Player of the Year her freshman year.

Also returning are senior **April Fields**, junior **Erin Redfield** and sophomore **Caitlin Locke**. Fields saw action in eight events last season.

Three true freshmen, **Kirby Baker**, **Dina O'Brien** and **Sarah Shaikh**, will join the team this season and will be looking to compete right away.

"I am very excited to see all of my freshmen perform and achieve this year," McNeil says. "They will provide immediate strength to an already solid program. I expect each of them to compete and play in the lineup throughout the season. They will do nothing but make us better athletically and academically."

## SCHEDULE

St. Edward's will play three tournaments this fall against teams within the West region. The team will also travel to Florida to compete in the Bubba Watson Invitational in Pensacola, where it will face, arguably, the toughest field of the regular season.

"Our schedule for the 2008–2009 season is very exciting," McNeil says. "It includes a lot of heavy travel from coast to coast, but we will be playing against some of the top teams in the nation. Having a tough schedule will only make us better."

## FINAL THOUGHTS

The Hilltoppers will look to get over that hump they refer to as regionals and make it to the university's first-ever national women's golf tournament.

"For us to achieve the goal of making it to the national tournament, all seven players must put total faith in each other and push each other to work hard each and every day," says McNeil. "With a relatively young group of student-athletes, we will rely heavily on the experience from those who are returning."

St. Edward's hopes to add the national tournament to an already daunting schedule this season. Of course, once at the national tournament, anything can happen.



**Jennifer McNeil**  
 Head Coach | Sixth Season  
 Mary Hardin-Baylor, '00

Jennifer McNeil enters her sixth season as head coach of the St. Edward's University women's golf team.

In the span of five seasons, McNeil has led the Hilltoppers from a last-place finish at the Heartland Conference championship in 2003–2004 to back-to-back Heartland Conference championships in 2006–2007 and 2007–2008. She has also led the team to two-straight appearances in the NCAA West regional tournament. She has coached 15 all-conference players, two conference players of the year and two conference freshmen of the year in her five-year stint. During the 2007–2008 season, the Hilltoppers were ranked as high as 12th in the nation, and they finished in fourth place in the NCAA West regional tournament, just missing a trip to the national tournament.

McNeil is currently the Division II representative for the National Golf Coaches Association. She has been named the Heartland Conference Coach of the Year three times and received Regional Coach of the Year honors once. A graduate of the University of Mary Hardin-Baylor, McNeil came to St. Edward's University from Mill Creek Inn and Golf Club, where she worked as an assistant golf professional.

As a player, McNeil earned four NAIA all-America honors at Mary Hardin-Baylor. She was named most valuable player four times, and she was selected senior athlete of the year. McNeil was also a member of the 2000 NAIA national championship team.

McNeil grew up in Austin and attended Anderson High School. After receiving her bachelor's in Exercise and Sports Science from Mary Hardin-Baylor, she attended Baylor University and earned a master's degree in Sports Management.



**April Fields**  
 Senior | Austin | Lake Travis HS

Year	Tour.	Rds	Strokes	Avg.	Best Rd	Top 10	Top 20	Best Finish
2005-2006	3	6	508	84.7	80	1	1	T8
2006-2007	1	2	171	85.5	85	0	0	T43
2007-2008	8	17	1424	83.8	79	1	2	8
<b>Total</b>	<b>12</b>	<b>25</b>	<b>2103</b>	<b>84.1</b>	<b>79</b>	<b>2</b>	<b>3</b>	<b>8</b>



**HILLTOPPER CAREER**

**Junior:** Appeared in eight tournaments; was named second-team all-Heartland Conference and to the Heartland Conference Commissioner's Honor Roll; posted an 83.76 scoring average in 17 rounds of action; tied for 14th place at the St. Edward's Invitational (87-80 — 167); placed eighth at the Heartland Conference tournament (82-86 — 168).

**Sophomore:** Appeared in one tournament; was named to the Heartland Conference Commissioner's Honor Roll; had an 85.50 scoring average in two rounds played; finished tied for 43rd at the St. Edward's Invitational (85-86 — 171).

**Freshman:** Appeared in three tournaments; was named to the Heartland Conference Commissioner's Honor Roll; tallied an 84.7 scoring average in six rounds; had one top-10 finish and one top-20 finish; finished tied for eighth at the St. Edward's Invitational (80-84 — 164).

**HIGH SCHOOL CAREER**

Lettered four years for Randy Morris at Lake Travis High School; was named first-team all-district her sophomore through senior seasons; also named first-team all-region her junior and senior seasons; led her team to appearances in the state tournament her sophomore through senior seasons; also competed in soccer, where she was named first-team all-district all four seasons; was a member of the art club, National Honor Society and school choir.

**PERSONAL**

**Major:** Biochemistry

**Favorite book:** *Live, Pray, Love*

**What most people don't know about me:** "I know sign language."

**Why I chose St. Edward's:** "I chose St. Edward's because of the education, small class size and location. I love being close to family. The professors at St. Edward's are always willing to help. Austin is home to many great golf courses that welcome players from St. Edward's."

**Favorite sport (besides golf):** Soccer

**Favorite athlete:** Tiger Woods

**WHAT'S IN THE BAG:**

Woods: Callaway and Nike

Irons: Nike

Wedges: Cleveland

Putter: Scotty Cameron

**COACH'S COMMENTS:** "April is a tremendous golfer with a wealth of talent. She has a calmness about her on the golf course that is refreshing to watch. Her leadership in the classroom and on the golf course has afforded her the opportunity to lead the team in her senior season as one of the captains. I cannot believe this is her senior year. She has made our program so much better throughout her four years and she will be truly missed."



## Emily Kvinta

Junior | Yoakum | Yoakum HS

Year	Tour.	Rds	Strokes	Avg.	Best Rd	Top 10	Top 20	Best Finish
2005-2006	10	22	1722	78.3	73	7	9	1
2006-2007	11	23	1805	78.5	72	5	8	1
2007-2008	2	4	309	77.3	74	1	1	T5
<b>Total</b>	<b>23</b>	<b>49</b>	<b>3836</b>	<b>78.3</b>	<b>72</b>	<b>13</b>	<b>18</b>	<b>1</b>

### HILLTOPPER CAREER

**Junior (Redshirt):** Appeared in two tournaments before red shirting the rest of the year; was named to the Heartland Conference President's Honor Roll; tallied a team-best 77.25 scoring average in four rounds of action; finished tied for fifth at the Broncho Masters Fall Classic (74-75 — 149).

**Sophomore:** Appeared in 11 tournaments; was named first-team all-conference; named to the Heartland Conference all-tournament team and to the Heartland Conference Commissioner's Honor Roll; had a 77.89 scoring average in 23 rounds of play; took home medalist honors at the Lady Rattler Invitational (72-78 — 150); finished third at the Heartland Conference tournament (74-84 — 158).

**Freshman:** Appeared in 10 tournaments; was named first-team all-Heartland Conference, Heartland Conference Freshman of the Year and Heartland Conference Player of the Year; was named to the Heartland Conference President's Honor Roll; tallied a 78.3 scoring average in 22 rounds, which topped the team; had two victories, seven top-10 finishes and nine top-20 finishes; won the Texas State Invitational (74-73-75 — 222) and the Heartland Conference championship (77-74 — 151).

### HIGH SCHOOL CAREER

Lettered four years for Nicco Brown at Yoakum High School; was named first-team all-district, first-team all-region and first-team all-state her sophomore through senior seasons; was also the team's most valuable player and the individual district champion her freshman, junior and senior seasons; was the individual regional champion and individual state runner-up her senior season; helped lead her team to district and regional championships all four seasons and to a state championship her junior season; was also a member of the Anchor Club, National Honor Society, Fellowship of Christian Athletes and school band, where she was the drum major.

### PERSONAL

**Major:** Kinesiology

**Favorite sport (besides golf):** Basketball

**Favorite book:** *The Little Red Book*

**Favorite athlete:** Phil Mickelson

**What most people don't know about me:** "I have to eat a peanut butter and jelly sandwich at every tournament."

**Why I chose St. Edward's:** "I chose St. Edward's because I really liked the campus, the team and what the university stands for."

**WHAT'S IN THE BAG:** Woods: Cleveland    Irons: Callaway    Wedges: Titleist    Putter: Odyssey

**COACH'S COMMENTS:** "Emily, by far, has one of the best short games I have seen in college golf. If the ball is anywhere on the green, it is most likely going in. I am excited to have her serve for the second year as team captain. Her fantastic attitude on the course and her unrelenting desire for success is an example for all to follow."



## Erin Redfield

Junior | Nassau Bay | Clear Lake HS

Year	Tour.	Rds	Strokes	Avg.	Best Rd	Top 10	Top 20	Best Finish
2006-2007	1	2	183	91.5	91	0	0	73
2007-2008	1	2	179	89.5	84	0	0	T49
<b>Total</b>	<b>2</b>	<b>4</b>	<b>362</b>	<b>90.5</b>	<b>84</b>	<b>0</b>	<b>0</b>	<b>T49</b>

### HILLTOPPER CAREER

**Sophomore:** Appeared in one tournament; registered an 89.50 scoring average in two rounds of action; finished tied for 49th place at the St. Edward's Invitational (95-84 — 179).

**Freshman:** Appeared in one tournament; tallied a 91.50 scoring average in two rounds of play; finished 73rd at the St. Edward's Invitational (92-91 — 183).

### HIGH SCHOOL CAREER

Lettered two seasons for Janis Balsame and two years for Karolyn Criado at Clear Lake High School; was team captain her senior season; helped lead her team to the district championship all four years, the regional championship her freshman season and the state championship her junior season; also helped the team to a sixth-place finish at the state tournament her freshman, sophomore and senior seasons; was a member of the broadcast journalism club and the Falcon Fanatics.

### PERSONAL

**Major:** Kinesiology

**Favorite sport (besides golf):** Swimming

**Favorite book:** *To Kill a Mockingbird*

**Favorite athlete:** Phil Mickelson

**What most people don't know about me:** "I learned to water ski when I was four."

**Why I chose St. Edward's:** "I chose St. Edward's because it is a small university in an awesome town near my hometown."

**WHAT'S IN THE BAG:** Woods: TaylorMade    Irons: Callaway    Wedges: Titleist    Putter: Odyssey

**COACH'S COMMENTS:** "Erin is the longest hitter I have ever coached. I love watching her play. Erin's length is a true asset to her game and provides an extra arsenal for our team."



# Caitlin Locke

Sophomore | Murphys, Calif. | Bret Harte HS

Year	Tour.	Rds	Strokes	Avg.	Best Rd	Top 10	Top 20	Best Finish
2007–2008	2	4	370	92.5	90	0	0	T47
<b>Total</b>	<b>2</b>	<b>4</b>	<b>370</b>	<b>92.5</b>	<b>90</b>	<b>0</b>	<b>0</b>	<b>T47</b>

### HILLTOPPER CAREER

**Freshman:** Appeared in two tournaments; was named to the Heartland Conference President's Honor Roll; registered a 92.50 scoring average in four rounds of action; finished tied for 47th at the St. Edward's Invitational (90-96 — 186).

### HIGH SCHOOL CAREER

Lettered four years for Rich Cathcart at Bret Harte High School; was named first-team all-district her junior and senior seasons; was also named all-league all four seasons; helped lead team to league title as she captured the individual title as well; also was all-league and an all-section scholar athlete all four seasons; was member of the Student Council and yearbook committee; also named to the A/B Honor Roll all four seasons.

### PERSONAL

**Major:** Business Administration

**Favorite sport (besides golf):** Baseball

**Favorite book:** *The Guardian*

**Favorite athlete:** David Beckham

**What most people don't know about me:** "I'm obsessed with the color green."

**Why I chose St. Edward's:** "After visiting St. Edward's and being in Texas for the first time, I just really liked campus, classes and being in Austin."

**WHAT'S IN THE BAG:** Woods: Adams, TaylorMade, and Titleist Irons: Titleist Wedges: Titleist Putter: Scotty Cameron

**COACH'S COMMENTS:** "Caitlin is one of the hardest workers I have ever coached. I could give Caitlin any task and she would work diligently to accomplish that task. She sets a tremendous example for her teammates to follow when it comes to hard work and the results hard work brings."



# Kirby Baker

Freshman | Baton Rouge, La. | St. Joseph's Academy

### HIGH SCHOOL CAREER

Lettered four years for Holly Pandow at St. Joseph's Academy; named all-metro all four years and was the metro player of the year her sophomore season; finished as individual regional runner-up and state champion her senior season; finished as individual regional champion and state runner-up her junior season; helped lead her team to state championships her junior and senior seasons and state runner-up finishes her freshman and sophomore seasons; member of the Beta Club, Math Club and National Honor Society; was selected as a National Merit Finalist and Presidential Scholar.

### PERSONAL

**Major:** Mathematics

**Favorite sport (besides golf):** Volleyball

**Favorite book:** *Pride and Prejudice*

**Favorite athlete:** David Toms

**What most people don't know about me:** "My club volleyball team finished 11th in the nation in 2005."

**Why I chose St. Edward's:** "I chose St. Edward's because I love Austin, and it is a small school where I am able to play golf and continue my Catholic education."

**WHAT'S IN THE BAG:** Woods: Callaway Irons: Callaway Wedges: Cleveland Putter: Odyssey

**COACH'S COMMENTS:** "Kirby is one of the most focused athletes I have ever met. She is goal-oriented and a true perfectionist. I have no doubt she will accomplish all of her goals."



# Dina O'Brien

Freshman | Katy | Cinco Ranch HS

### HIGH SCHOOL CAREER

Lettered four years for Rick Nordstrom at Katy Cinco Ranch; was named first-team all-district all four seasons and was her team's most valuable player her sophomore through senior seasons; won four tournaments her senior season; helped lead her team to back-to-back district championships her junior and senior seasons; was a member of Mu Alpha Theta, National Charity League and Senior/Junior Women.

### PERSONAL

**Major:** Undecided

**Favorite sport (besides golf):** Soccer

**Favorite book:** *1984*

**Favorite athlete:** Ernie Els

**What most people don't know about me:** "I am a songwriter, and I play guitar."

**Why I chose St. Edward's:** "I chose St. Edward's because it's located in Austin, the campus is beautiful, and everything in the golf program was a great fit for me. It is what I am looking for in my college experience."

**WHAT'S IN THE BAG:** Woods: TaylorMade Irons: TaylorMade Wedges: Titleist Putter: Scotty Cameron

**COACH'S COMMENTS:** "Dina's work ethic is tremendous. Her love and passion for the game of golf is going to help her become a tremendous college player."



## Sarah Shaikh

Freshman | Granbury | Granbury HS

### HIGH SCHOOL CAREER

Played four years for Becky Addison at Granbury High School; named first-team all-district her sophomore and senior seasons; also named second-team all-district her freshman and junior seasons; selected second-team all-region her sophomore season and academic all-state her senior season; member of National Honor Society and the Spanish Honor Society.

### PERSONAL

**Major:** Pre-Medicine

**Favorite sport (besides golf):** Basketball

**Favorite book:** *Twilight*

**Favorite athlete:** Tiger Woods

**Why I chose St. Edward's:** "I chose St. Edward's because of its academics, golf program, the location, the coach and the size of the university."

**WHAT'S IN THE BAG:** Woods: Ping Irons: Ping Wedges: Cleveland Putter: Odyssey

**COACH'S COMMENTS:** "Sarah is a phenomenal ball striker. I am in awe watching her play. She works very hard on her game and strives to be the best. I am excited to watch her play this year."

## 2007-2008 Year in Review

Date	Event Site (Course)	Rounds	Score	Place
Sept. 10-11	Drury Regional Shootout, Springfield, Mo. (Rivercut GC)	326-337	663	9th/18
Sept. 17-18	NSU Women's Golf Classic, Tahlequah, Okla. (Cherry Springs GC)	323-310	633	T2nd/16
Oct. 8-9	Broncho Masters Fall Classic, Edmond, Okla. (Knockingbro GC)	301-298	599	2nd/13
Oct. 15-16	NSU Sharks Invitational, West Palm Beach, Fla. (PGA National GC)	324-330	654	7th/18
Feb. 16	Tarleton State Coca-Cola Classic, Granbury, Texas (Harbor Lakes GC)	318	318	4th/16
Feb. 25-26	Lady Rattler Roundup, San Antonio, Texas (Dominion CC)	332-337	669	3rd/11
March 3-4	St. Edward's Invitational, Austin, Texas (Grey Rock GC)	335-327	662	2nd/16
March 10-11	Peggy Kirk Bell Invitational, West Palm Spring, Fla. (Tuscaquilla CC)	322-326-328	976	8th/13
March 24-25	Grand Canyon Women's Invitational, Goodyear, Ariz. (Palm Valley GC)	307-308	615	T1st/18
April 7-8	InterWest Chico State Invitational, Chico, Calif. (Butte Creek CC)	324-313	637	4th/11
April 14-15	Heartland Conference Championship, Dallas (Dallas GC)	321-330	651	1st/6
May 5-7	NCAA West Regional, Phoenix, Ariz. (Legacy Golf Resort)	312-311-318	941	4th/6

## Individual Stats

Name	Total Tourneys	Total Rds	Total Strokes	Stroke Average	Best Rd	Top 10	Top 20	Best Finish
Kailee Carver	6	11	924	84.00	80	0	0	T22
April Fields	8	17	1424	83.76	79	1	2	8
Allison Kinser	12	25	1997	79.88	75	5	9	T5
Emily Kvinta	2	4	309	77.25	74	1	1	T5
Caitlin Locke	2	4	370	92.50	90	0	0	T47
Erin Redfield	1	2	179	89.50	84	0	0	T49
Kelly Rigsby	11	23	1929	83.87	76	2	3	9
Alex Smith	12	25	1971	78.84	70	8	9	1
Jacqueline Struck	12	25	2035	81.40	73	3	7	T4
<b>Team</b>	<b>12</b>	<b>25</b>	<b>8018</b>	<b>320.72</b>	<b>298</b>	<b>12</b>	<b>12</b>	<b>1st (Twice)</b>

## Round-by-Round Results

	Drury Regional					NSU Classic					Broncho Masters					NSU Shark					Coca-Cola					Lady Rattler				
	1	2	3	T	PL	1	2	3	T	PL	1	2	3	T	PL	1	2	3	T	PL	1	2	3	T	PL	1	2	3	T	PL
Kailee Carver	86	84	-	170	T50	82	82	-	164	T22	82	80	-	162	T28	87	84	-	171	T55	86	-	-	86	T28	-	-	-	-	-
April Fields	-	-	-	-	-	-	-	-	-	-	-	-	-	-	-	-	-	-	-	-	84	-	-	84	25	90	82	-	172	T23
Allison Kinser	81	84	-	165	T34	79	75	-	154	T6	76	82	-	158	T20	80	85	-	165	T39	79	-	-	79	T7	85	85	-	170	T18
Emily Kvinta	-	-	-	-	-	-	-	-	-	-	74	75	-	149	T5	80	80	-	160	T24	-	-	-	-	-	-	-	-	-	-
Caitlin Locke	-	-	-	-	-	-	-	-	-	-	-	-	-	-	-	-	-	-	-	-	-	-	-	-	-	90	96	-	186	T47
Erin Redfield	-	-	-	-	-	-	-	-	-	-	-	-	-	-	-	-	-	-	-	-	-	-	-	-	-	-	-	-	-	-
Kelly Rigsby	87	90	-	177	T68	86	88	-	174	T43	82	76	-	158	T20	-	-	-	-	-	86	-	-	86	T28	80	85	-	165	T9
Alex Smith	80	82	-	162	T21	84	78	-	162	T18	72	70	-	142	2	77	84	-	161	T26	75	-	-	75	1	79	85	-	164	8
Jacqueline Struck	79	87	-	166	T39	78	75	-	153	T4	79	73	-	152	T7	89	82	-	171	T55	80	-	-	80	T13	88	87	-	175	T28
	St. Edward's					Peggy Kirk Bell					Grand Canyon					Chico State					Heartland					West Regional				
	1	2	3	T	PL	1	2	3	T	PL	1	2	3	T	PL	1	2	3	T	PL	1	2	3	T	PL	1	2	3	T	PL
Kailee Carver	87	84	-	171	T26	-	-	-	-	-	-	-	-	-	-	-	-	-	-	-	-	-	-	-	-	-	-	-	-	-
April Fields	87	80	-	167	T14	90	88	83	261	58	79	79	-	158	T27	84	85	-	169	T36	82	86	-	168	8	79	81	85	245	T24
Allison Kinser	86	83	-	169	T21	76	78	76	230	T17	75	80	-	155	T16	77	79	-	156	6	79	87	-	166	T5	76	76	78	230	T10
Emily Kvinta	-	-	-	-	-	-	-	-	-	-	-	-	-	-	-	-	-	-	-	-	-	-	-	-	-	-	-	-	-	-
Caitlin Locke	93	91	-	184	T62	-	-	-	-	-	-	-	-	-	-	-	-	-	-	-	-	-	-	-	-	-	-	-	-	-
Erin Redfield	95	84	-	179	T49	-	-	-	-	-	-	-	-	-	-	-	-	-	-	-	-	-	-	-	-	-	-	-	-	-
Kelly Rigsby	82	89	-	171	T26	84	85	83	252	T50	80	85	-	165	T58	83	81	-	164	T27	85	84	-	169	9	82	79	87	248	T26
Alex Smith	84	80	-	164	T5	78	81	89	249	T45	73	75	-	148	2	85	73	-	158	T9	75	81	-	156	1	79	75	76	230	T10
Jacqueline Struck	83	84	-	167	T14	84	82	86	252	T50	80	74	-	154	T12	80	80	-	160	T14	88	79	-	167	7	78	81	79	240	17

## Women's Golf at St. Edward's

### NCAA HISTORY

<b>2003-2004</b>		
<b>Tournament, Course, Location, Date</b>	<b>Finish</b>	<b>Score</b>
Lady Bulldog Fall Classic, Starcke Park GC, Seguin, Texas, Sept. 22-23	N/A	N/A
Texas A&M-International Invitational, Laredo CC, Laredo, Texas, Sept. 28-29	3rd/3	403-392 — 795
ACU Invitational, Diamondback GC, Abilene, Texas, Oct. 6-7	N/A	N/A
Bronc Classic, Golf Club at Cimarron, Mission, Texas, Feb. 23-24	N/A	N/A
Lady Crusader Invitational, Sammons Park GC, Temple, Texas, March 1-2	N/A	N/A
St. Edward's Invitational, Live Oak CC, Austin, Texas, March 8-9	N/A	N/A
Teravista Invitational, Teravista GC, Round Rock, Texas, March 28-29	7th/9	403-384 — 787
UT- Brownsville Invitational, Roy Kiser GC, Austin, Texas, April 3-4	2nd/6	354-366 — 733
Heartland Conference Tournament, Ray Kiser GC, Austin, Texas, April 19-20	6th/6	393-373 — 766
<b>2004-2005</b>		
<b>Tournament, Course, Location, Date</b>	<b>Finish</b>	<b>Score</b>
Rockhurst Invitational, Swope Park GC, Kansas City, Mo., Sept. 15-16	2nd/8	353-342 — 695
Grand Canyon Fall Invitational, Coldwater GC, Goodyear, Ariz., Sept. 27-28	T5th/9	333-321 — 654
Ranger Classic Invitational, Pheasant Run GC, Enid, Okla., Oct. 11-12	1st/6	324
Mary Hardin-Baylor Invitational, Wildflower CC, Temple, Texas, Oct. 18-19	5th/17	332-327 — 659
Lady Crusader Invitational, Mill Creek CC, Salado, Texas, Feb. 28-March 1	3rd/14	337-337 — 674
Hill Country Classic, Tapatio Springs Resort, Boerne, Texas, March 4-5	9th/14	357-317 — 674
Pepsi Lion Invitational, Tanglewood Resort, Pottsboro, Texas, March 21-22	7th/15	348-352 — 700
Grand Canyon Invitational, Palm Valley GC, Goodyear, Ariz., March 28-29	T12th/21	325-333 — 658
Subway Women's Invitational, Tascosa CC, Amarillo, Texas, April 4-5	8th/9	350
Heartland Conf. Tournament, Stanley Farms GC, Kansas City, Mo., April 18-19	3rd/6	359-354 — 713
<b>2005-2006</b>		
<b>Tournament, Course, Location, Date</b>	<b>Finish</b>	<b>Score</b>
NSU Women's Golf Classic, Cobblestone Creek GC, Muskogee, OK, Sept. 19-20	4th/16	327-304 — 631
St. Edward's Invitational, Colavista CC, Bastrop, Texas, Oct. 3-4	3rd/14	329-328 — 657
Coca-Cola Classic, Harbor Lakes GC, Granbury, Texas, Oct. 10-11	4th/14	323-310 — 633
Hill Country Classic, The Golf Club of Texas, San Antonio, Texas, Feb. 25-26	7th/19	321-327 — 648
Lady Otter Invitational, Bayonet GC, Seaside, Calif., March 6-7	2nd/14	339-329 — 668
Pepsi Lion Invitational, Tanglewood Resort, Pottsboro, Texas, March 20-21	3rd/17	330-336 — 666
Grand Canyon Invitational, Palm Valley GC, Goodyear, Ariz., March 27-28	T3rd/17	312-309 — 621
CenturyTel Bobcat Classic, Quail Creek CC, San Marcos, TX, April 3-4	8th/14	317-325-326 — 968
Heartland Conference Tournament, Sunset Hills GC, Guymon, OK, April 17-18	2nd/7	322-317 — 629
NCAA West Regional, Muskogee CC, Muskogee, OK, May 1-2	3rd/6	324-305-316 — 945
<b>2006-2007</b>		
<b>Tournament, Course, Location, Date</b>	<b>Finish</b>	<b>Score</b>
Deerfield Inn Regional Shootout, Rivercut GC, Springfield, Mo., Sept. 11-12	2nd/20	311-301 — 612
NSU Women's Golf Classic, Cobblestone Creek GC, Muskogee, OK, Sept. 18-19	5th/21	316-315 — 631
Coca-Cola Classic, Harbor Lakes GC, Granbury, Texas, Oct. 9-10	1st/16	299-300 — 599
Nova Southeastern Classic, PGA National GC, Palm Beach Gardens, Fla., Oct. 16-17	T10th/17	340-317 — 657
Lady Rattler Roundup, Pecan Valley GC, San Antonio, Texas, Feb. 25-26	1st/18	315-321 — 636
St. Edward's Invitational, The Golf Club at Circle C, Austin, Texas, March 5-6	1st/20	325-319 — 644
Pepsi Lion Invitational, Tanglewood Resort, Pottsboro, Texas, March 19-20	3rd/15	328-322 — 650
Grand Canyon Invitational, Palm Valley GC, Goodyear, Ariz., March 26-27	T4th/20	312-315 — 627
CenturyTel Bobcat Classic, Plum Creek GC, Kyle, Texas, April 2-3	4th/7	308-306-317 — 931
Heartland Conf. Tournament, Hackberry Creek CC, Dallas, Texas, April 16-17	1st/7	325-337 — 662
NCAA West Regional, The Golf Club at Circle C, Austin, TX, April 30-May 1	3rd/6	311-313-306 — 930
<b>2007-2008</b>		
<b>Tournament, Course, Location, Date</b>	<b>Finish</b>	<b>Score</b>
Drury Regional Shootout, Rivercut GC, Springfield, Mo., Sept. 10-11	9th/18	326-337 — 663
NSU Women's Golf Classic, Cherry Springs GC, Tahlequah, Okla., Sept. 17-18	T2nd/16	323-310 — 633
Broncho Masters Fall Classic, Kokingboro GC, Edmond, Okla., Oct. 8-9	2nd/13	301-298 — 599
Nova Southeastern Classic, PGA National GC, Palm Beach Gardens, Fla., Oct. 15-16	7th/18	324-330 — 654
Coca-Cola Classic, Harbor Lakes GC, Granbury, Texas, Feb. 16	4th/16	318
Lady Rattler Roundup, Dominion CC, San Antonio, Texas, Feb. 25-26	3rd/11	332-337 — 669
St. Edward's Invitational, Grey Rock GC, Austin, Texas, March 3-4	2nd/16	335-327 — 662
Peggy Kirk Bell Invitational, Tuscaawilla CC, West Palm Springs, Fla., March 10-11	8th/13	322-326-328 — 976
Grand Canyon Invitational, Palm Valley GC, Goodyear, Ariz., March 24-25	T1st/18	307-308 — 615
InterWest Chico State Invitational, Butte Creek CC, Chico, Calif., April 7-8	4th/11	324-313 — 637
Heartland Conference Tournament, Dallas GC, Dallas, Texas, April 14-15	1st/6	321-330 — 651
NCAA West Regional, Legacy Golf Resort, Phoenix, Ariz., May 5-7	4th/6	312-311-318 — 941

<b>Top 3 for St. Edward's (to fix possessive error)</b>		
T9, Williams 80-82 — 162; T24, Chaffee 86-83 — 169; T42, Adamson 98-92 — 190.	1, Williams 86-79 — 165; 4, Chaffee 89-90 — 179; 5, Adamson 91-93 — 184.	T8, Chaffee 83-77 — 160; T15, Williams 82-83 — 165; T30, Adamson 93-91 — 184.
25, Chaffee 83-79-85 — 247; 28, Williams 92-89-79 — 260; DNF, Adamson 93-88-DNF.	T20, Williams 95-81 — 176; T22, Chaffee 89-88 — 177; T30, Adamson 95-91 — 186.	T6, Williams 90-86 — 176; T14, Chaffee 95-86 — 181; DNF, Adamson 104-DNF.
T7, Williams 92-82 — 174; T11, Chaffee 89-89 — 178; 24, Adamson 100-92 — 192.	10, Williams 79-84 — 163; T15, Chaffee 82-86 — 168; 20, Adamson 86-88 — 174.	T11, Williams 88-86 — 174; T11, Chaffee 89-85 — 174; 19, Adamson 92-92 — 184.

<b>Top 3 for St. Edward's</b>		
6, Kinser 86-83 — 169; 8, Rigsby 89a85 — 174; 9, Williams 88-88 — 176.	T15, Kinser 82-79 — 161; T15, Williams 83-78 — 161; 23, Carver 83-82 — 165.	1, Groff 76; 3, Chaffee 80; T4, Carver 83.
T8, Williams 79-80 — 159; 16, Chaffee 85-79 — 164; T25, Groff 85-82 — 167.	T12, Rigsby 81-88 — 169; T12, Carver 83-86 — 169; T16, Williams 87-83 — 170.	T29, Groff 82-91 — 173; T34, Carver 88-81 — 169; T37, Williams 92-78 — 170.
T19, Groff 85-88 — 173; T22, Carver 88-81 — 169; T34, Rigsby 91-87 — 178.	15, Williams 77-80 — 157; T40, Carver 81-83 — 164; T53, Kinser 82-85 — 167.	T30, Groff 86; T32, Rigsby 87; 36, Kinser 88.
4, Williams 85-88 — 173; T9, Kinser 92-84 — 176; T12, Groff 92-88 — 190.		

<b>Top 3 for St. Edward's</b>		
T5, Kvinta 79-74 — 153; T5, Williams 82-71 — 153; T26, Rigsby 82-80 — 162.	2, Kvinta 79-77 — 156; T8, Fields 80-84 — 164; T10, Chaffee 83-82 — 165.	T2, Kinser 77-70 — 147; T14, Kvinta 78-79 — 157; T25, Rigsby 82-80 — 162.
T18, Kvinta 79-80 — 159; T27, Carver 79-84 — 163; T29, Chaffee 81-83 — 164.	T3, Kvinta 84-79 — 163; T9, Kinser 82-86 — 168; T9, Groff 86-82 — 168.	6, Chaffee 83-79 — 162; T8, Kvinta 77-88 — 165; T11, Kinser 87-82 — 169.
T13, Chaffee 77-78 — 155; T15, Kinser 79-77 — 156; T25, Carver 87-71 — 158.	1, Kvinta 74-73-75 — 222; T34, Chaffee 79-85-84 — 248; T34, Kinser 80-83-85 — 248.	1, Kvinta 77-74 — 151; T2, Kinser 76-78 — 154; T7, Chaffee 82-78 — 156.
4, Kinser 78-74-75 — 227; 9, Rigsby 80-74-81 — 235; T17, Chaffee 82-76-86 — 244.		

<b>Top 3 for St. Edward's</b>		
5, Struck 76-73 — 149; T6, Chaffee 76-75 — 151; T15, Kvinta 79-77 — 156.	9, Kvinta 79-75 — 154; T15, Kinser 79-79 — 158; T20, Struck 79-80 — 159.	T3, Kinser 74-74 — 148; T3, Struck 75-73 — 148; 9, Kvinta 73-77 — 150.
T37, Kvinta 80-83 — 163; T37, Kinser 86-77 — 163; 42, Struck 87-77 — 164.	1, Kvinta 72-78 — 150; 8, Struck 78-80 — 158; 11, Williams 84-77 — 161.	2, Struck 80-75 — 155; T12, Kinser 81-81 — 162; T14, Kvinta 83-80 — 163.
T1, Kinser 78-75 — 153; T12, Kvinta 82-81 — 163; Chaffee 84-83 — 167.	T9, Struck 74-80 — 154; T17, Kinser 79-77 — 156; T26, Chaffee 77-81 — 158.	9, Kinser 81-74-74 — 229; T10, Struck 76-75-81 — 232; 23, Chaffee 78-81-79 — 238.
2, Kinser 81-75 — 156; 3, Kvinta 74-84 — 158; T6, Struck 80-90 — 170.	2, Kinser 75-74-74 — 223; 7, Kvinta 76-77-77 — 230; T22, Chaffee 81-82-79 — 242.	

<b>Top 3 for St. Edward's</b>		
T21, Smith 80-82 — 162; T34, Kinser 81-84 — 165; T39, Struck 79-87 — 166.	T4, Struck 78-75 — 153; T6, Kinser 79-75 — 154; T18, Smith 84-78 — 162.	2, Smith 72-70 — 142; T5, Kvinta 74-75 — 149; T7, Struck 79-73 — 152.
T24, Kinser 80-80 — 160; T26, Smith 77-84 — 161; T39, Kinser 80-85 — 165.	1, Smith 75; T7, Kinser 79; T13, Struck 80.	8, Smith 79-85 — 164; T9, Rigsby 80-85=165; T18, Kinser 85-85 — 170.
T5, Smith 84-80 — 164; T14, Fields 87-80=167; T14, Struck 83-84 — 167.	T17, Fields 76-78-76 — 230; T45, Smith 78-81-89 — 249; T50, Rigsby 84-85-83 — 252.	2, Smith 73-75 — 148; T12, Struck 80-74 — 154; T16, Kinser 75-80 — 155.
6, Kinser 77-79 — 156; T9, Smith 85-73 — 158; T14, Struck 80-80 — 160.	1, Smith 75-81 — 156; T5, Kinser 79-87 — 166; 7, Struck 88-79 — 167.	T10, Smith 79-75-76=230; T10, Kinser 76-76-78 — 230; 17, Struck 78-81-79 — 240.

# 10 HISTORY & RECORDS

## Individual Season

**Most events played:** 12, four times

**Most rounds played:** 28, Allison Kinser, 2006–2007

**Lowest stroke average:** 77.89, Allison Kinser, 2006–2007

**Low round:** 70, Alex Smith, Broncho Masters Fall Classic, Oct. 8–9, 2007, and Allison Kinser, Coca-Cola Classic, Oct. 11, 2005

**Low tournament score (36 holes):** 142, Alex Smith, Broncho Masters Fall Classic, Oct. 8–9, 2007

**Low tournament score (54 holes):** 222, Emily Kvinta, Texas State Invitational, April 3–4, 2006

**Low tournament score (72 holes):** 312, Allison Kinser, NCAA Division II national tournament, April 30 and May 1, 2007

**Most rounds under par:** 1, four times

## Individual Career

**Most events played:** 44, Allison Kinser, 2004–2008

**Most rounds played:** 94, Allison Kinser, 2004–2008

**Lowest stroke average:** 78.29, Emily Kvinta, 2005–

**Most rounds under par:** 1, Kailee Carver, Allison Kinser, Alex Smith and Katy Williams

**Most tournaments won:** 3, Emily Kvinta, 2005–

## Team Season

**Most tournament wins, season:** 4, 2006–2007

**Most events, season:** 12, 2007–2008

**Most rounds played, season:** 25, 2007–2008

**Low round:** 298, Broncho Masters Fall Classic, Oct. 8–9, 2007

**Low tournament score (36 holes):** 599, Broncho Masters Fall Classic, Oct. 8–9, 2007, and Coca-Cola Classic, Oct. 9–10, 2006

**Low tournament score (54 holes):** 930, NCAA West regional tournament, April 30–May 1, 2007

**Low tournament score (72 holes):** NA

**Largest margin of victory:** 24, Heartland Conference tournament, April 14–15, 2008

## Women's Golf All-Time NCAA Roster

Player	Year(s)
Adamson, Andrea	2003–2004
Carver, Kailee	2004–2008
Chaffee, Ashley	2003–2007
Fields, April	2005–2008
Groff, Jessica	2004–2007
Kinser, Allison	2004–2008
Kvinta, Emily	2005–2008
Locke, Caitlin	2007–2008
McTee, Taylor	2005–2006
Osher, Luly	2003–2004
Redfield, Erin	2006–2008
Rigsby, Kelly	2004–2008
Ruiz, Jennifer	2003–2004
Smith, Alex	2007–2008
Struck, Jacqueline	2006–2008
Williams, Katy	2003–2007
Wix, Allyson	2004–2005



Ashley Chaffee

## NCAA Honors List

Player	Year(s)	Player	Year(s)	Player	Year(s)
<b>ALL-AMERICA</b>		<b>ALL-CONFERENCE</b>		<b>ALL-CONFERENCE</b>	
<i>Academic</i>		<i>First Team</i>		<i>Player of the Year</i>	
Jessica Groff	2005–2006	Katy Williams	2005	Emily Kvinta	2006
Kelly Rigsby	2005, 2007–2008	Allison Kinser	2006–2008	Alex Smith	2008
<b>ALL-REGION</b>		Emily Kvinta	2006–2007		
<i>First Team</i>		Jacqueline Struck	2007–2008	<i>Freshman of the Year</i>	
Allison Kinser	2007	Alex Smith	2008	Emily Kvinta	2006
		<i>Second Team</i>		Jacqueline Struck	2007
<i>Coach of the Year</i>		Allison Kinser	2005	Alex Smith	2008
Jennifer McNeil	2007	Ashley Chaffee	2006–2007		
		Katy Williams	2007	<i>Coach of the Year</i>	
		April Fields	2008	Jennifer McNeil	2004–2005 (men's golf), 2006–2007 (women's golf) 2007–2008 (women's golf)
		Kelly Rigsby	2008		



**Debbie Taylor, MEd**  
**Director of Athletics**

Debbie Taylor is in her seventh year as the director of Athletics at St. Edward's. She first came to the hilltop as the head volleyball coach in 1990 and has been an athletic administrator since 1995, promoted to associate athletic director in 1999 and to the director position in 2002. She created the Compliance Office in 1995 to help the university transition into NCAA Division II.

A former all-America volleyball player, Taylor received a bachelor's degree in Education from Southwestern University in 1986. During her tenure at Southwestern, Taylor established herself as one of the top volleyball players in the school's history. Her team advanced to the NAIA national tournament during the 1981 and 1983 seasons. She was an NAIA all-American in 1983 and 1984, and she was selected to the all-national tournament team in 1983. Taylor was named the Most Outstanding Physical Education Major in 1985 and was inducted into the Athletic Hall of Honor in 1990 and the Athletic Hall of Fame in 2008. She earned her master's degree in Physical Education and Educational Administration at Southwest Texas State University in 1992. Taylor served seven years as an officer for the American Volleyball Coaches Association serving as president in 1998. She was recognized for meritorious service by the United States Association of Volleyball in 1995 and served the state of Texas as an Impact Coach Certified Instructor.

As a coach, Taylor posted an overall record of 428–167 at St. Edward's. In 1991, 1996 and 1997, her team won the Heart of Texas Conference and, in 2001, won the Heartland Conference. In 1996, her team won the NAIA Southwest Region tournament championship. Overall she has coached four teams to the national tournament with two quarterfinal appearances. In 1990, her first year at St. Edward's, Taylor was named conference coach of the year, and she won the honor again in 2001. In 12 seasons, Taylor coached five conference most valuable players, seven conference freshmen of the year, 49 all-conference players, 67 academic all-conference players, 12 all-Americans and 11 scholar all-Americans.

As an administrator, Taylor was honored as the 1993 NAIA District IV Female Administrator of the Year and the 1997 NAIA Southwest Region Female Administrator of the Year. She has provided leadership to the Heartland Conference as chair of athletic directors. Taylor has also served on the NCAA management council, reinstatement committee and men's basketball regional ranking committee. Under Taylor's leadership as director of Athletics, the Hilltoppers have enjoyed 23 conference championships, 32 appearances in post-season play, three top-three national finishes and 22 conference Coach of the Year awards.

When asked if she misses coaching, Taylor will tell you that she's still coaching — she's just coaching the coaches.

Taylor and her husband, Robert, reside in Kyle.



**Nikki Cockrell**  
**Associate Director of Athletics for Facilities and Event Management**

Nikki Cockrell begins her second year as associate director of Athletics for facilities and event management. She assists the director of Athletics in managing all aspects of athletic facilities, intercollegiate competition and campus recreation.

Cockrell previously served as the parks and recreation director for the City of Smithville, where she spent eight years. She initially joined the staff as manager of the Smithville Recreation Center in 1999 and was elevated to parks and recreation director in 2000. Cockrell managed four city parks, the city skate park and the 22,500-square-foot Recreation Center, overseeing 18 employees in the process. She was also involved in generating advertising, attracting fundraising and planning capital projects in the City of Smithville, as well as serving on numerous boards and committees within the community.

Cockrell is a 1999 graduate of UT–Austin, where she earned a bachelor's in Sport Management. While at UT, she was a three-year letter winner and one of the founding members of the Longhorn softball team, helping coach Connie Clark establish the team. Cockrell was named an academic and athletic all-American in 1998 and 1999, and was the NCAA Woman of the Year for the state of Texas in 1999. She was inducted into the UT Women's Athletics Hall of Honor in 2006, the first softball player inducted.

Cockrell currently resides in Austin.



**Jennifer White**  
**Assistant Director of Athletics for Student Services and Women's Basketball Head Coach**

Jennifer White enters her sixth season as head women's basketball coach at St. Edward's and her third year as assistant director of Athletics.

As the assistant director of Athletics, she has myriad responsibilities that include being the liaison between Athletics and Residence Life, being heavily involved in student orientation, and taking on a leadership role within Athletics. White is also responsible for post-season awards, sits on numerous committees and serves as a mentor to new staff members within Athletics.

White came to the hilltop from the PlayStrong division of Ironsmith Corporation in Austin, which she developed. PlayStrong has received national and statewide recognition for its development of fundamental basketball skills and its training and conditioning programs.

Her education and basketball-playing experience began in 1979 at Louisiana Tech University in Ruston, La. During her time at Louisiana Tech, she was a member of the 1981 AIAW Division I and 1982 NCAA Division I national championship teams. In 1983, she earned a bachelor's degree in Physical Education, and she earned an MS in Physical Education from Louisiana Tech in 1985.

White served as an assistant coach to Leon Barmore with the Lady Techsters from 1985 to 1990. She then held an assistant coaching position at UT–Austin under Naismith Basketball Hall of Fame member Jody Conradt for three years.

## Sports Information Office

**Logan Lawrence**  
Sports Information Director  
Office: 512-464-8810  
Cell: 512-636-2779

E-mail: [loganl@stedwards.edu](mailto:loganl@stedwards.edu)  
Basketball  
Cross Country  
Men's Soccer  
Softball



**Tim Hansen**  
Student Assistant  
Office: 512-464-8810  
E-mail: [thansen@stedwards.edu](mailto:thansen@stedwards.edu)  
Baseball  
Golf  
Volleyball



**Tori Martello**  
Student Assistant  
Office: 512-464-8810  
E-mail: [vmartel@stedwards.edu](mailto:vmartel@stedwards.edu)  
Tennis  
Women's Soccer



## Media Information

The 2008–2009 St. Edward's University media guides have been produced to assist you with your coverage of the Hilltoppers. Additional information, photographs and statistics are available upon request.

### Covering Practice

Practice sessions are generally open to the media. Representatives of the media are encouraged to contact the St. Edward's University Sports Information Office to arrange easy access to players and coaches prior to or following practice. Practice times vary. Contact the St. Edward's Sports Information Office for practice times.

### Phone Interviews

The St. Edward's University Sports Information Office requests media representatives arrange phone interviews at least one day in advance. Phone interviews can be arranged by calling the Sports Information Office. In accordance with university policy, individual phone numbers of student-athletes will not be given out.

### On the Web

For the latest news regarding St. Edward's University Athletics, including updated statistics, results, press releases and historical archives, go to the Athletics' web pages at [www.stedwards.edu/sports](http://www.stedwards.edu/sports).

Sports Information Office fax: 512-428-1001

## Media Outlets

### *Austin American-Statesman*

PO Box 670  
Austin, TX 78767  
Phone: 512-912-2952  
Fax: 512-445-3868

**Associated Press–Texas**  
1005 Congress Ave., Ste. 995  
Austin, TX 78701-2469  
Phone: 512-472-4004  
Fax: 512-469-0800

**KVUE-24 ABC**  
3201 Steck Ave.  
Austin, TX 78757  
Phone: 512-459-6521  
Fax: 512-533-2233

**KEYE-TV CBS**  
10700 Metric Blvd.  
Austin, TX 78758  
Phone: 512-835-0042  
Fax: 512-490-2111

**KXAN-TV NBC**  
908 W. MLK BLVD.  
Austin, TX 78701  
Phone: 512-476-3636  
Fax: 512-476-1520

**KTBC-TV FOX**  
119 E. 10th St.  
Austin, TX 78701  
Phone: 512-476-7777  
Fax: 512-495-7060

**NEWS 8-Austin**  
1708 Colorado St.  
Austin, TX 78701-1131  
Phone: 512-531-8000  
Fax: 512-531-1234



Debbie Taylor  
Athletics Director



Melinda Terry  
Associate Athletics Director  
Compliance



Nikki Cockrell  
Associate Athletics Director  
Facilities and Events



Jennifer White  
Assistant Athletics Director  
Women's Basketball Head Coach



Mike Harris  
Faculty Athletics  
Representative



Logan Lawrence  
Sports Information Director



Monica Baker  
Administrative Assistant



Jennifer Knight  
Office Specialist

## Mailing Address

St. Edward's University, Athletics Office  
3001 South Congress Ave., Austin, TX 78704  
Athletics Fax: 512-416-5834  
SID Fax: 512-428-1001

## Administrative Staff

Debbie Taylor, Director of Athletics	Area Code: 512 448-8744
Nikki Cockrell, Associate Director of Athletics for Facilities and Events	233-1495
Melinda Terry, Associate Director of Athletics for Compliance	233-1637
Jennifer White, Assistant Director of Athletics for Student Services	448-8590
Mike Harris, Faculty Athletics Representative	448-8460
Monica Baker, Administrative Assistant	448-8480
Jennifer Knight, Office Specialist	448-8480
Logan Lawrence, Sports Information Director	464-8810
Chris Magott, Associate Athletics Trainer	428-1378
Nicole Reimer, Assistant Athletics Trainer	416-5802

## Coaching Staff

Rob Penders, Head Baseball Coach	448-8497
Chris Young, Assistant Baseball Coach	428-1053
Ryan Marks, Head Men's Basketball Coach	448-8591
Jon Havens, Assistant Men's Basketball Coach	428-1089
Jennifer White, Head Women's Basketball Coach	448-8590
JJ Riehl, Assistant Women's Basketball Coach	428-1031
Ann Mary Carney, Cheerleading and Dance Team Coach	637-5615
Tony Riehl, Head Cross Country Coach	428-1272
Jennifer McNeil, Head Women's Golf Coach	233-1654
Brian Young, Head Men's Soccer Coach	448-8507
Adrian Rigby, Assistant Men's Soccer Coach	428-1355
Nick Cowell, Head Women's Soccer Coach	428-1052
Jay Mason, Assistant Women's Soccer Coach	428-1054
Amy Coulter, Head Softball Coach	448-8494
Jessica Rogers, Assistant Softball Coach	428-1049
Russell Sterns, Men's and Women's Head Tennis Coach	448-8743
Simon Boyce, Men's and Women's Assistant Tennis Coach	637-5617
Sean Donahue, Head Volleyball Coach	428-1386
Kim Morgal, Assistant Volleyball Coach	233-1435



Chris Magott  
Associate Athletics Trainer



Nicole Reimers  
Assistant Athletics Trainer



Rob Penders  
Head Baseball Coach



Chris Young  
Assistant Baseball Coach



Ryan Marks  
Head Men's  
Basketball Coach



Jon Havens  
Assistant Men's  
Basketball Coach



JJ Riehl  
Assistant Women's  
Basketball Coach



Ann Mary Carney  
Cheerleading Coach



Tony Riehl  
Head Cross Country Coach



Jennifer McNeil  
Head Women's  
Golf Coach



Brian Young  
Head Men's  
Soccer Coach



Adrian Rigby  
Assistant Men's  
Soccer Coach



Nick Cowell  
Head Women's  
Soccer Coach



Jay Mason  
Assistant Women's  
Soccer Coach



Amy Coulter  
Head  
Softball Coach



Jessica Rogers  
Assistant  
Softball Coach



Russel Sterns  
Head Tennis Coach



Simon Boyce  
Assistant  
Tennis Coach



Sean Donahue  
Head  
Volleyball Coach



Kim Morgal  
Assistant Volleyball  
Coach

## 14 FACILITIES & EQUIPMENT

When you arrive at our 160-acre hilltop campus, you'll find a balance of traditional and modern architecture that speaks to the university's rich past and exemplifies our bright future. You'll also discover that campus life extends far beyond the classroom. Whether it's working out in the fitness center after a swim, grabbing a cappuccino in Meadows Coffeehouse or catching up with friends in an outdoor courtyard, you'll find a rich and active community at St. Edward's.

### Main Building

A Texas Historic Landmark and one of several campus buildings on the National Register of Historic Places, Main Building sits on one of the highest elevation points in Austin and overlooks the city's skyline. The university celebrated the building's centennial in 2003.

### Robert and Pearle Ragsdale Center

Named for Texas aviation pioneers Robert and Pearle Ragsdale, the center offers lectures, free movies and special events with a wide range of services and conveniences inside including Meadows Coffeehouse, student lounges, a computer center, a game room, South Congress Market (the university dining hall), conference and study rooms, and the Student Life Office.



### Recreation and Convocation Center

Located in the heart of campus, the Recreation and Convocation Center is a full-featured modern facility equipped with a fitness center, a six-lane pool, four racquetball/handball courts, two full-size basketball floors and space to display all the Hilltopper trophies.

### Grey Rock Golf Club

Originally opened in 1992, the Grey Rock Golf Club is 15 minutes from downtown Austin on 160 acres of rolling hill country. Designed by Jay Moorish, this course offers a classic-style layout in championship condition with a wide range of play for all skill levels. The course has been cited in both regional and national golf magazines as one of Texas' best daily fee courses.

### Diane Daniels Field

Built in 1988, Diane Daniels Field is the home of the Hilltopper softball team. It was dedicated and named on April 10, 1990, in honor of Diane Daniels, a physical education instructor and first female coach at St. Edward's. The field includes enclosed dugouts, a 2,800-square-foot covered batting facility and tiered bleacher seating for spectators.



### Lucian-Hamilton Field

Built in 1968, Lucian-Hamilton Field provides an on-campus facility for the men's baseball team. The field is named for longtime athletics director Brother Lucian Blersch, CSC, and former men's baseball coach Tom Hamilton. The field also features a batting cage, press box, concession stand and tiered seating for spectators.



### Brother Emmett Strohmeyer Tennis Courts

Built in the late 1960s, the tennis courts are named in honor of Brother Emmett Strohmeyer, CSC, a legendary tennis coach at St. Edward's who amassed 25 consecutive conference championships. Five tennis courts provide a playing area for both the men's and women's tennis teams.



### Soccer Field

In 2004, St. Edward's unveiled a new soccer field for men's and women's soccer. The field sits just below Main Building and overlooks the downtown Austin skyline. A walking/running track encircles the new field.





## George E. Martin, PhD

### President

Since becoming the 23rd president of St. Edward's University on July 1, 1999, George E. Martin has led the university's collaborative effort to attain national recognition as one of the best small universities in the country. That effort has already achieved results. *U.S. News & World Report* has ranked St. Edward's among the top 25 master's-granting universities in the West for the past five years — recognition bestowed on only three other institutions in Texas.

In the early days of his presidency, Martin introduced a vision and a set of seven strategic priorities focusing on student enrollment, faculty recruitment and retention, curricular and co-curricular programs, new facilities, technology development, fundraising, and marketing. These strategic priorities, combined with an ambitious master plan, define the future direction of the university.

Progress toward these goals has been tremendous. Traditional undergraduate enrollment has grown by 60 percent since 1999 while maintaining a low student-faculty ratio. The university's exceptional faculty has increased by 47 percent. New facilities, such as Trustee Hall and the 65,000-square-foot John Brooks Williams Natural Sciences Center–North Building, have elevated learning with the latest instructional technology. Two new residence halls — Basil Moreau Hall and Jacques Dujarié Hall — have changed the heart of campus with feature-rich student living.

As the campus evolves to meet the needs of a growing student body, Martin is committed to ensuring the university stays true to its Holy Cross mission: to deliver a personalized, transformative educational experience in a diverse and supportive community.

Martin says the role of president is not one of power but of possibility. He leads by listening, thinking, sharing energy and ideas, and encouraging creativity within the culture of the institution.

**Born:** Jan. 10, 1944, Brooklyn, N.Y.

**Education:** Bachelor's degree from St. John's University; master's and doctoral degrees from Fordham University

**Involvements:** Martin volunteers at a number of civic and artistic organizations, including the Library Advisory Board, the Ballet Austin Board of Directors, the United Way Community Board, the Leadership Austin Advisory Board, and is an Honorary Advisory Council Member of the Austin Symphony. He serves on the boards of the Council of Independent Colleges, Association of Catholic Colleges and Universities, Independent Colleges and Universities of Texas, and Saint Mary's College. He is a member of the American Council on Education's Commission on Leadership and Institutional Effectiveness and the Texas Campus Compact. Martin has served as a conference president for the NCAA Division II Heartland Conference.

**Career highlights:** Martin entered faculty service in 1969 as a member of the St. Peter's College Political Science Department and became chairman in 1976. In 1985, he was named academic dean of St. Peter's College and served in that role until 1991, when he became academic vice president. He was inaugurated as president of St. Edward's University in October 1999.



## Sandra Pacheco, PhD

### Vice President for Student Affairs

Sandra Pacheco is a native Texan, born and reared in Houston. She received a BS in psychology from the University of Houston, an MS in Psychology from Oklahoma State University and a PhD in Counseling Psychology from UT–Austin.

Pacheco came to St. Edward's University in May 1981 as a psychological counselor. She was director of the counseling center from 1982 to 1989, until she became dean for Student Development. In 1993, she was promoted to associate vice president for Student Services. Presently she is vice president for Student Affairs.

In 2004, Pacheco was selected to participate in the Kellogg Minority-Serving Institutions Leadership Fellows Program by the Hispanic Association of Colleges and Universities. The program is designed to increase the number of Hispanic senior-level leaders at Hispanic-serving institutions. Pacheco was one of 10 fellows nationally selected by HACU.



## Mike Harris, PhD

### Faculty Athletics Representative

Michael Harris is a professor of Accounting in the School of Management and Business. He has taught at St. Edward's since 1998. He is also a certified public accountant with more than 35 years of professional experience, including serving as chief financial officer for two companies. Harris earned his doctorate at UT–Austin. In 2004, Harris received the university's Distinguished Teaching Award.

Outside the classroom, Harris is involved in competitive swimming and long distance running. Harris lives in Austin with his wife, KK, a healthcare consultant to both the City of Austin and the State of Texas.

# 16 SPIRIT PROGRAM

## 2008–2009 Cheerleaders

The St. Edward's University cheerleaders are dedicated athletes who represent the university by participating in national competitions. They also lead the charge in promoting school spirit and enthusiasm across campus in support of Athletics. When they are not on the competition floor or the sidelines cheering, they serve as representatives of the student body, faculty and staff through community service.



**Ann Mary Carney | Coach**

Carney enters her third year of coaching the St. Edward's cheerleaders and has been a part of the university community for 10 years as an adjunct faculty member teaching dance courses. As a coach she strives to instill the values of commitment and responsibility in a positive environment. Carney has a BS degree in Dance Education from Texas State University. She also holds an MFA in Performance and Choreography from Mills College. As head coach, Carney brings her skills as a teacher, performer, former cheerleader and gymnast along with her aesthetic sensitivity to the St. Edward's spirit program.



**Erin Conant**  
Senior  
Houston  
St. Pius X HS



**Brittany Jackson**  
Senior  
Round Rock  
Round Rock HS



**Angie Caballero**  
Junior  
Los Fresnos  
Los Fresnos HS



**Derrick Heslip**  
Junior  
Pflugerville  
Hendrickson HS



**Candace Cabello**  
Sophomore  
Austin  
Plano East HS



**Danny DeLosSantos**  
Sophomore  
Mercedes  
Mercedes HS



**Danielle Garcia**  
Sophomore  
San Antonio  
University of the Incarnate Word



**Beth Jackson**  
Sophomore  
Dripping Springs  
Dripping Springs HS



**Veronica Trevino**  
Sophomore  
Palmview  
La Joya HS



**Austin Cassel**  
Freshman  
Plano  
Plano HS



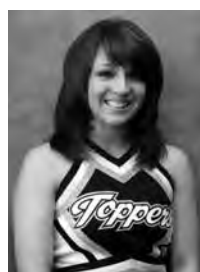
**Ashley Hughes**  
Freshman  
Mission  
Sharyland HS



**Christina Jasinski**  
Freshman  
Austin  
St. Michael's Academy



**Lauren Lev**  
Freshman  
Richmond  
Foster HS



**Jessi Molohon**  
Freshman  
Spring  
Klein HS



**Jillian Rootring**  
Freshman  
Yorba Linda, Calif.  
Esperanza HS



**Jade Shapiro**  
Freshman  
Huntington Beach, Calif.  
Edison H. S.



## Topper

Topper arrived on the hilltop in 2002 as the university's official new mascot. Topper's mission includes working with the cheerleaders, dance team and HillRaisers to promote school spirit across campus. Topper can occasionally be seen roaming campus.

## HillRaisers

The HillRaisers are a student spirit group open to all St. Edward's University students. Founded in 2007, the group seeks to have a visible fan presence at all home athletic events. The HillRaisers also spread spirit off the hilltop with bus trips to away games at rival schools. In addition to cheering on the Hilltoppers, the HillRaisers instill school spirit around campus. Spirited students join the HillRaisers by purchasing a T-shirt at any home athletic events, and wearing it to athletic events and cheering on the Hilltoppers.

## Dance Team

The St. Edward's University Sapphires dance club performs jazz, pom and hip-hop styles of dance. The Sapphires appear at volleyball and basketball games and at events on campus.



## 2008–2009 Sapphires Roster

### **Maria Espinoza**

Senior  
Round Rock  
Pflugerville HS

### **Cristal Gonzales**

Sophomore  
Mission  
Mission HS

### **Carolina Corkill**

Sophomore  
Riviera  
Science Academy of South Texas

### **Kenjewel Hayes**

Sophomore  
Round Rock  
Stony Point HS

### **Aspen Leach**

Freshman  
Austin  
Austin HS

### **Marcella Maxwell**

Sophomore  
Round Rock  
McNeil HS

### **Caitlin Lott**

Junior  
Austin  
James Bowie HS

### **Meg Seeger**

Freshman  
Plano  
John Paul II HS

### **Ashley Wainscott**

Sophomore  
Austin  
James Bowie HS

### **CO-CAPTAINS:**

#### **Veronica Hernandez**

Senior  
El Paso  
Loretto Academy HS

#### **Kaci Polanco**

Junior  
Austin  
James Bowie HS

## St. Edward's University Hall of Fame

Eligibility for Hall of Fame members is defined by criteria that includes being out of school for at least five years; receiving national recognition as an athlete, coach or administrator; being of good character and reputation; and having no stronger connection with another university. Anyone can nominate a person for consideration to the Hall of Fame.

### Class of 1987

Bob Beck, '71, men's basketball  
 Joe Beck, '58, men's basketball  
 Brother Lucian Blerch, CSC, '34, administration  
 Toney Burger, '30, baseball  
 Joseph Byrne, baseball  
 Billy Disch, baseball  
 Zembra Everett, '74, men's basketball  
 Frankie Farley, '25, baseball, football and men's basketball  
 Tom Hamilton, baseball  
 Lou Hertenberger, '30, football  
 Brother Edmond Hunt, CSC, service  
 Harold Jansing, '30, baseball, football and men's basketball  
 Bob Lucash, '72, men's basketball  
 Roger Metzger, '70, baseball  
 Ed Norris, '41, coach  
 Michael Emmett O'Shaughnessy, '28, baseball and men's basketball  
 Julio Rojas, '67, tennis  
 Brother Emmett Strohmeier, CSC, coach  
 Sabas Zapata, '68, track and field

### Class of 1989

Jack Chevigny, coach  
 Diane Daniels, coach  
 Marvin Durrenberger, '27, football and men's basketball  
 Dan Dwyer, '63, tennis  
 Dave Eckstein, '62, men's basketball  
 Ed Fleming, '36, coach

Bob Hilliard, '80, tennis  
 Kathryn Hopkins, '83, volleyball and women's basketball  
 John Kleinow, baseball  
 John Lucas, '65, track  
 Jack Meagher, '26, football  
 Ed Neu, '52, baseball and men's basketball  
 T.J. O'Connor, '50, football and men's basketball  
 Jim O'Keefe, '62, men's basketball  
 Burke O'Rourke, '51, baseball  
 Vince Richbourg, '61, baseball and men's basketball  
 Al Vogt, '30, football  
 Edward Woeber, '25, football and men's basketball

### Class of 1991

Mike Canfield, '68, men's basketball  
 Julieanne De Ybarrondo, '85, volleyball  
 Steve Dunlap, '81, golf  
 Brother William Dunn, CSC, service  
 James Ellison, '79, baseball  
 Brother Walter Foken, CSC, administration  
 Paul McDermott, '65, men's basketball  
 Clare McFadden, tennis  
 Kevin Mullins, '83, tennis  
 Mike Otolski, '67, baseball and men's basketball  
 Al Popp, '57, men's basketball  
 Charlie Popp, '59, men's basketball  
 Ted Popp, '60, men's basketball

### Class of 1993

DeNell Davis, '87, women's basketball  
 Ginny Green, '85, volleyball and women's basketball  
 Kelly Latz, '80, baseball  
 Richard Poppe, '72, tennis  
 Henry Thames, '83, baseball  
 John Wells, '69, men's basketball

### Class of 1995

Ron Bella, '56, men's basketball  
 Brother Elmo Bransby, CSC, service

Julie Chauvin, '89, cross country, softball, volleyball and women's basketball  
 Joe Devaney, '38, football  
 Lisa Hudson, '90, women's basketball  
 Rick Lindell, '80, baseball

### Class of 1997

Jay Lee Hobbs, '90, men's basketball  
 Melanie Hudkins, '92, volleyball  
 Ian Lipski, '93, soccer  
 Tina Tindell, '91, softball  
 Greg Trlicek, '85, baseball

### Class of 1999

Nace Formagus, '42, football  
 Glenn Hinkle, service  
 Paula Jasek, '93, softball and women's basketball  
 Taj McWilliams-Franklin, '93, women's basketball  
 Dairan Talley, '95, soccer

### Class of 2002

Heather Arnold-Stoner, '98, volleyball  
 Kellie Bilski-Geraci, '95, softball  
 Rhonda Darling, '94, women's basketball  
 Myron Gilmore, '81, baseball  
 Gabriel Jones, '94, soccer  
 Kirk Wagner, '94, soccer  
 Heather Young-Forshay, '96, soccer

### Class of 2004

Suzy Bayer, '99, volleyball  
 Joe Kucera, '95, tennis  
 Casey Lucas, '97, tennis  
 Jimmy Wheeler, '94, men's basketball

### Class of 2006

Julie Burlison-Grant, '96, volleyball  
 Aaron Farris-Seafous, '92, women's basketball  
 Karl Jauhainen, '86, tennis  
 Kevin Karo, '91, baseball  
 Jimmy Wheeler, '94, men's basketball



## Heartland Conference

The Heartland Conference is an NCAA Division II conference, founded in 1999, consisting of nine schools, six from Texas and one each from Missouri, Kansas and Oklahoma. The schools in the Heartland Conference stretch from as far north and east as Jefferson City, MO., as far south as Laredo, and as far west as Odessa.

The following schools were founding members: St. Edward's University (Austin), University of the Incarnate Word (San Antonio), St. Mary's University (San Antonio) and Lincoln University (Jefferson City, MO.). The following schools were added at later dates: Dallas Baptist University (Dallas) in 2004, Oklahoma Panhandle State University (Goodwell, Okla.) in 2002, UT-Permian Basin (Odessa) in 2006, Texas A&M-International (Laredo) in 2006, and Newman University (Wichita, Kan.) in 2006.

The universities in the Heartland Conference offer a wide range of undergraduate, graduate and professional programs. Some of the academic programs sponsored by member institutions are among the best in the nation, including the Business Administration program at the University of the Incarnate Word, the Nursing program at Lincoln University, the Pre-Medicine program at St. Edwards University, the International Relations and Pre-Medicine programs at St. Mary's University, and the Agriculture and Elementary Education programs at Oklahoma Panhandle State University.

Among the many accomplishments of these institutions are national championships in baseball, golf, swimming, basketball and softball as well as national rankings in all sports. The strength of the student-athlete concept is well-supported by the many NCAA scholar-athletes in each school, the high cumulative GPA of the student-athletes in each school and the high number of student-athletes who graduate from each institution in the Heartland.

The Heartland Conference is the newest of the NCAA Division II conferences. At the present time, there are 24 conferences in NCAA Division II, totaling almost 300 institutions across the nation.

### DALLAS BAPTIST

Location	Dallas
Founded	1898
Enrollment	5,244
Nickname	Patriots
Colors	Navy, Red and White
President	Gray Cook, DMin
Athletic Director	Ryan Erwin
Web Site	<a href="http://www.dbu.edu/athletics">www.dbu.edu/athletics</a>

### INCARNATE WORD

Location	San Antonio
Founded	1881
Enrollment	4,300
Nickname	Cardinals
Colors	Red, Black and White
President	Louis J. Agnese, PhD
Athletic Director	Mark Papich
Web Site	<a href="http://www.uiw.edu/athletics">www.uiw.edu/athletics</a>

### LINCOLN

Location	Jefferson City, Mo.
Founded	1866
Enrollment	3,600
Nickname	Blue Tigers
Colors	Navy and White
President	Carolyn R. Mahoney, PhD
Athletic Director	Betty Kemna
Web Site	<a href="http://www.lincolnu.edu/athletics">www.lincolnu.edu/athletics</a>

### NEWMAN

Location	Wichita, Kan.
Founded	1933
Enrollment	2,200
Nickname	Jets
Colors	Crimson and Blue
President	Noreen Carrocci
Athletic Director	TBA
Web Site	<a href="http://www.newmanu.edu/athletics">www.newmanu.edu/athletics</a>

### PANHANDLE STATE

Location	Goodwell, Okla.
Founded	1909
Enrollment	1,300
Nickname	Aggies
Colors	Red, White and Blue
President	David A. Bryant, PhD
Athletic Director	Jerry Olson
Web Site	<a href="http://www.opsu.edu/athletics/athletics.htm">www.opsu.edu/athletics/athletics.htm</a>

### ST. EDWARD'S

Location	Austin
Founded	1885
Enrollment	5,317
Nickname	Hilltoppers
Colors	Navy and Gold
President	George E. Martin, PhD
Athletic Director	Debbie Taylor
Web Site	<a href="http://www.stedwards.edu/sports">www.stedwards.edu/sports</a>

### ST. MARY'S

Location	San Antonio
Founded	1852
Enrollment	4,500
Nickname	Rattlers
Colors	Blue and Gold
President	Charles Cotrell, PhD
Athletic Director	Charlie Migl
Web Site	<a href="http://www.stmarytx.edu/athletics">www.stmarytx.edu/athletics</a>

### TEXAS A&M-INTERNATIONAL

Location	Laredo
Founded	1969
Enrollment	4,917
Nickname	Dust Devils
Colors	Maroon and Metallic Silver
President	Ray Keck, PhD
Athletic Director	Debbie Snell
Web Site	<a href="http://www.godustdevils.com">www.godustdevils.com</a>

### UT-PERMIAN BASIN

Location	Odessa
Founded	1969
Enrollment	3,500
Nickname	Falcons
Colors	Orange and Black
President	David Watts, PhD
Athletic Director	Steve Aicinena
Web Site	<a href="http://www.utpb.edu">www.utpb.edu</a>



A nationally recognized university, St. Edward's offers a close-knit academic community with small classes and personalized attention. For more than a century, the university has provided higher education opportunities to students of all ages and of varied cultural, religious, educational and economic backgrounds.

In 2000, the university adopted a vision to become recognized as one of the best small universities accredited in the United States. We've made significant progress toward this goal, including being ranked among the top 25 master's-granting universities in the West in *U.S. News & World Report* for five years running.

The university has received many other commendations, including national recognition

from *Hispanic Outlook in Higher Education* magazine as one of the "Top 100 Schools Graduating Hispanics"; inclusion in *Colleges with a Conscience*; and high marks in the National Survey of Student Engagement, where students' opinions of St. Edward's exceeded the national average in all categories.

St. Edward's is celebrated for anticipating and responding to our changing world with innovation. Working alongside our dedicated faculty, students are prepared to unleash their potential as they build a foundation for lifelong learning, achievement and personal satisfaction in career and community life.

## CONGREGATION OF HOLY CROSS

Think critically, act ethically, appreciate diversity, strive for social justice and serve the community: These are the values of the Congregation of Holy Cross, which founded St. Edward's more than a century ago. The tenets continue to drive the university's mission today and transform our students into global citizens ready for the challenges of our complex world.

**5:** St. Edward's exceeded the national average in all five benchmark areas of the National Survey of Student Engagement: level of academic challenge, active and collaborative learning, student interactions with faculty, enriching educational experiences, and supportive campus environment.

**5:** St. Edward's won five out of 13 Heartland Conference championships for the 2007–2008 athletic season.

**14:** With a growing campus of more than 5,300 students, St. Edward's maintains a low student-to-faculty ratio of 14:1 in the traditional undergraduate college.

**25:** St. Edward's has been named among the top 25 master's-granting institutions in the western region by *U.S. News & World Report* for six consecutive years.

**100%:** St. Edward's puts a priority on buildings and technology that enhance learning. In fact, 100 percent of our classrooms have advanced computer and multimedia technology.

## ST. EDWARD'S UNIVERSITY AT A GLANCE

- Tuition: \$24,040
- Room and board: \$6,206 to \$9,020
- Undergraduate Students: 3,430
- 60% Female, 40% Male
- Diversity:
  - 32% Hispanic
  - 3% African American
  - 3% Asian/Pacific Islander
  - 2% International
- 39 states represented
- 40 countries represented

### Application Deadlines:

- Priority Decision: Feb. 1 (for scholarship consideration and the best financial assistance packages)
- Regular Decision: May 1
- Spring Application Deadline: Nov. 15
- Nonrefundable Deposit Deadline: May 1 (or two weeks after notification of admission if you are accepted later than May 1)



### Austin: Life in the Capital City

Austin is down-home but sophisticated. Laid-back but bustling with energy. Rich in tradition but eclectic. With its natural beauty, vibrant nightlife, big business and casual atmosphere, Austin regularly makes the grade as one of the country's best places to live.

### Natural Wonder

Home to 200 parks and three lakes, Austin is full of natural beauty. Zilker Park, just 10 minutes from campus, includes 351 acres along the shores of Lady Bird Lake and offers the Zilker Botanical Garden, a hike-and-bike trail, picnic areas, an outdoor theater and canoe rentals. Neighboring Barton Springs, Austin's three-acre natural swimming pool, is a town favorite on hot summer days with its constant 68-degree waters.

### Live Music Capital of the World

Music is at the heart of Austin culture. From country to blues, rock to hip-hop, Austinites find a sound to suit every taste in the more than 200 live music venues around town. The city also hosts the South by Southwest Music Festival, a massive industry event that gathers more than 1,000 fresh new bands from around the world.

### On the Rise

*Forbes* magazine recently rated Austin among the best places to do business and advance your career. A recognized high-tech hub, the "Silicon Valley of Texas" has hundreds of semiconductor, computer and software companies. Other industries, such as film, multimedia and music, are also booming. Productions ranging from *A Scanner Darkly* to the *Friday Night Lights* TV show have been shot here.

**2** Austin was named the second best place to live in the United States by *Money* in 2006, the second most popular destination by *Travel + Leisure* along with being named one of the coolest cities in the country by *Kiplinger*. It's the combination of Texas charm and big-city sophistication that led *Fortune* magazine to proclaim, "Austin is what many a United States city longs to be ... It has style."

**1 in 8** Austin is the capital of Texas and the sixteenth-largest city in the United States. Of the more than 700,000 residents, one in eight is a college student.

**69°** Austin enjoys a temperate climate with 300 days of sunshine, mild winters and an average annual temperature of 69 degrees.

**309** Standing a stately 309 feet, the Capitol building in Austin was constructed in 1888 of Texas pink granite.

**1.5 million** Austin loves bats — 1.5 million of them to be exact. The destination city for the largest urban bat colony in North America from March to November, Austin shows its bat pride with landmark sculptures and regular gatherings on the Ann W. Richards Congress Avenue Bridge to catch the bats' sunset flight.



Back row (L-R): Erin Redfield, Kirby Baker, Sarah Shaikh, April Fields. Front Row (L-R): Emily Kvinta, Caitlin Locke, Dina O'Brien, Head Coach Jennifer McNeil.